

PRICE LIST COSMOS RANGE

Pruning of fruit trees

DEPARTURE FROM PONS (FR-17800)

REF. N° COS.02.23

Validity for DELIVERY
before the 31/07/2023



2023



Terms & Conditions of Export Sales

I. GENERAL INFORMATION

1. Purpose and scope of application of the general terms and conditions

These professional terms and conditions of sale frame the professional usages for activities that are brought together under the union of equipment for construction, infrastructure, steelworks and handling. They are in compliance with the rules of law for contracts and competition law and are filed with the Office of Practices (Bureau des usages) of the registry of the Commercial Court of Paris.

In accordance with Article L441-6 of the Commercial Code, they constitute "the single basis for sales negotiations". Therefore, they apply to all COUPECO SAS business and form the legal basis for an agreement, unless there are special conditions. Any eventual Buyer conditions of purchase have the status of a proposal. These terms and conditions take precedence over all contrary provisions formulated in any way by the Buyer if COUPECO SAS has not explicitly accepted them. Any derogation from the terms and conditions in favour of the Buyer is "justification" for compensation. Any order or acceptance of an offer from COUPECO SAS implies acceptance of these terms and condition unless there are negotiations between the parties.

These terms and conditions apply to the sale of Hardware or Equipment and associated services. They do not apply to service provision when said services are the main purpose of the agreement.

Under these terms and conditions "written" means any document established by any means, in particular in paper or electronic format.

2. Concluding the agreement

In the absence of special mention, the COUPECO SAS offer will be valid for one month. Unless specifically indicated by COUPECO SAS, this period of one month will be deemed to constitute the "set deadline" under the meaning of Article 1117 of the Civil Code.

The sales agreement is only complete after written acceptance from COUPECO SAS of the Buyer's order.

In the event of sales of spare parts, the dispatch of the parts by COUPECO SAS is deemed to constitute acceptance of the Buyer's order.

Any change to the agreement requested by the Buyer is subject to express acceptance from COUPECO SAS.

In the case of the expression of the Buyer's irrevocable consent, the Buyer therefore cannot cancel it, unless there is express prior agreement from COUPECO SAS. In this case, the Buyer will compensate COUPECO SAS for all expenses engaged and for all the direct and indirect consequences that result from this. Furthermore, the deposit that has already been paid remains acquired by COUPECO SAS.

Unless there is a contrary provision, the characteristics given in the catalogues, brochures and any COUPECO SAS publicity document are purely for indicative purposes.

COUPECO SAS reserves the possibility to make any changes that it deems appropriate to its models even after acceptance of orders. These changes should not alter the essential characteristics and performance of the Hardware and Equipment on sale.

3. Compliance and technical regulations

The products delivered comply with technical regulations that apply and technical standards to which COUPECO SAS has explicitly stated the product complies.

When COUPECO SAS is the manufacturer of the equipment, it is responsible for the technical regulations applicable to the design and initial marketing of said equipment. The Buyer is responsible for the regulations applicable to equipment commissioning and use.

The offer integrates regulatory requirements and more generally safety requirements known to COUPECO SAS at the time it is established. In the event of a change in regulatory requirements between the presentation of the offer and full execution of the agreement, updated compliance is not covered by COUPECO SAS, and the Buyer will be sent an additional offer to this effect.

Similarly, if during the same period COUPECO SAS receives information which is not available to it at the time of establishing the offer (comprehensive plan of the facility, accessories...) the changes or additional equipment made necessary in consequence will be subject to a complementary offer.

COUPECO SAS takes responsibility for the regulatory compliance of the equipment components.

Any change to the equipment that is not authorised by COUPECO SAS, carried out by the Buyer or a third party that is not accredited by COUPECO SAS, will lead to the cancellation of the CE Declaration of Conformity provided by COUPECO SAS. Replacement of a part that has repercussions on safety by a non-original part will also lead to the cancellation of said Declaration.

COUPECO SAS shall provide documents that contain service instructions (such as instruction manuals, user guides...). Users shall familiarise themselves with these before commissioning.

The Buyer is responsible for operating the product under foreseeable conditions of use and in application of safety and environmental laws in force at the user site as well as sound professional practice.

In particular, it is the Buyer's responsibility to choose a product that matches its technical requirements and its operational process if necessary, and to conform with COUPECO SAS that the product is suitable for the planned application.

II. DELIVERY

1. Terms of delivery

Delivery deadlines begin from the date on which receipt of the order is acknowledged, subject to receiving all the documents to be provided by the Buyer in order to begin executing the agreement and the payment of any eventual planned down payment.

Whatever the destination of the sale, sale, delivery is deemed to take place in the COUPECO SAS factories or workshops unless otherwise provided for in the agreement.

It takes place through simple mode of availability notified by any means. Direct handover of the Hardware to the Buyer, or Delivery of the Hardware to COUPECO SAS factories or workshops to a dispatch or transport company designated by the Buyer, or, failing this, by COUPECO SAS may take the place of such notice.

The Buyer must take possession of the hardware within ten days following the notification of availability.

If the Buyer does not take the Hardware at the agreed place and time, and on condition to the delay not being attributable to an act or omission on the part of COUPECO SAS, it is bound to carry out the payments provided for in the agreement as the delivery is deemed to have been carried out. In this case, COUPECO SAS can choose to provide storage at the Buyer's expense and risk, once the Hardware has been individualised, or to store it in its warehouse.

Under no circumstances may an extension to the delivery date indicated attributable to COUPECO SAS lead to a cancellation of the order, payment of damages and interest or any other sort of penalty.

2. Receipt

Should the Buyer not make a written claim within eight days following the date of delivery, the Hardware and Equipment are deemed to have been received.

Any claim related to transport should be made within a period of three days (refer to Article IV).

III. RESERVATION OF OWNERSHIP AND TRANSFER OF RISKS

COUPECO SAS retains full ownership of goods that are the purpose of the agreement until full payment of the price (principal and incidentals), in compliance with Articles 2367 and following of the Civil Code and L. 624-16 and following of the Commercial Code.

From the moment of delivery, the Buyer becomes responsible for any damage which these goods may be subjected to or cause for any reason whatsoever.

Until full payment, the goods may not be resold or transformed with prior agreement from COUPECO SAS.

However, in the event of resale, COUPECO SAS may operate its resale rights by claiming the debt directly from the end customer.

IV. TRANSPORT AND INSURANCE

Transport, insurance, customs, handling and transport to site operations are at the expense and risk of the Buyer. To this end, the Buyer should ensure that these operations can be performed in accordance with sound professional practice. In the absence of this, COUPECO SAS may refuse to allow these operations to be performed and will inform the Buyer of this as Article II.1 fully applies.

The measures that COUPECO SAS may be led to take in the interest of and on behalf of the Buyer in terms of insurance, transport... particularly the fact of including the cost of transport in the price does not detract from the principle of delivery to its factories or workshops.

Any transport performed by COUPECO SAS with its own material means, whether or not the expenses are borne by the Buyer, is deemed to done in accordance with a transport agreement that is separate from the sales agreement.

In the absence of instructions, COUPECO SAS will undertake the dispatch in the best interest of the Buyer. The Hardware and Equipment are only insured upon express request from the Buyer.

In every case, it is up to the Buyer to carry out all checks and to note all reservations upon the arrival of the Hardware and Equipment and to exercise, if necessary, the means of recourse against the transport company provided for under Article L. 133-1 and following of the Commercial Code within the time limits set by Article L. 133-3.

The mention "subject to unpacking" has no value vis-à-vis the transport company and cannot be accepted as a reservation.

V. PRICE

Prices are established in Euros, nets, excluding taxes and excluding customs, transport, insurance, packaging and "factory departure" costs for COUPECO SAS (FCA – Incoterms in force at the time the agreement is concluded). Under all scenarios, any eventual withholding taxes will be at the Buyer's expense.

The price is only valid for the period of validity of the offer in accordance with the terms of Article L2 above. Once the period of validity is over, COUPECO SAS reserves the right to amend its prices at any time.

The prices exclusively match the products and services specified in the offer, taking into account the various constitutive elements of the order accepted. Service provision, as well as additional supplies or supplies delivered during assembly are invoiced as a supplement.

Unless a different agreement exists, the specific studies and preliminary studies are not included in the price.

VI. CONDITIONS AND LATE PAYMENT

Unless there are different stipulations, payments are made to the home address of COUPECO SAS, net and without discount, and are payable according to the following conditions:

30% when the order is placed (down payment)

70% before the Hardware leaves the COUPECO SAS factory.

The remaining balance by SWIFT bank transfer according to bank identification information provided by the Vendor (fees payable by the Buyer) or bill of exchange accepted, payable starting from the date on which the invoice is issued within the reference time limit of 30 days.

In the event of a sale of spare parts and unless otherwise provided for, prices are understood to be for immediate payment on the date of delivery.

Any provision or request that would set or obtain a payment limit above this 30-day period, which represents good practice in the profession, and without an objective reason justified by the Buyer, may be considered to be unfair under the meaning of Article L. 442-61 7° of the Commercial Code.

Any invoice gives the date on which the payment should be made. The amounts paid prior to delivery in the nature of a down payment.

Down payments are always paid in cash and shall be subject to invoicing. VAT is payable according to the terms of Articles 256 II and 269 of the General Tax Code. Early payments are made without discount.

In the event of a payment by bill of exchange, acceptance should be within seven days of sending.

Any failure to make a payment within the agreed time limit or the refusal to accept a bill of exchange upon presentation, will lead to the following, without prejudice to the right to invoke the reservation of ownership provision:

Should this appear right to COUPECO SAS, the suspension or termination of all orders in progress

and, in application of Article L.441-6 paragraph 12 of the Commercial Code, any late payment will rightfully lead to, on the first day following the payment date that appears on the invoice:

1/ late payment penalties

Late payment penalties are determined in application of the European Central Bank refinancing rate increased by ten points.

2/ a flat payment for recovery fees amounting to 40 euros, in application of Article D. 441-5 of the Commercial Code.

In virtue of Article L. 441-6 mentioned above, when the recovery fees incurred are higher than the amount of this flat payment, COUPECO SAS is also within its rights to request additional compensation on the basis of supporting documents.

Should this appear right to COUPECO SAS, lawful termination of the sales agreement one month after notice has been served to the Buyer by registered letter with acknowledgement of receipt to comply with its obligations. In this case, and without prejudice to any damages, the Buyer, in addition to its obligation to return all goods in its possession, must pay termination compensation to COUPECO SAS, set at 20% of the price, assessed on the date of termination. This compensation will be assigned to the payments already received.

VII. NEW HARDWARE GUARANTEE

Scope of the guarantee

COUPECO SAS commits to rectifying any operational defects that result from a design flaw, the materials themselves or the execution (including assembly if this operation is entrusted to it), within the limit of the following provisions.

The guarantee rightfully lapses should there be a forfeit in the validity of the Declaration of Conformity when the Buyer has either made use of non-original spare parts or undertaken maintenance or repair work or changes either alone or through the intermediary of an unapproved third party without written agreement from COUPECO SAS.

The guarantee does not apply:

in cases of malfunctions that result from a lack of maintenance or surveillance or in general any handling that does not comply with the manufacturer's written instructions (including recommendations for normal use that appear in the instruction manual) or with regulations in force

defects that result wholly or partially from normal wear and tear of the part, deterioration or accidents attributable to the Buyer or an unapproved third party

in the event of a defect that comes from parts provided by the Buyer and integrated to the manufacturing at the Buyer's request

in the event of breaches committed by the Buyer in relation to execution of the Agreement

in the event of Force Majeure as defined in Article IX.

In the case where Hardware is used outside mainland France, COUPECO SAS may change the scope and the terms of the guarantee as defined in these terms and conditions.

Unless otherwise stipulated, no guarantee will apply to second-hand Hardware: when the initial user cedes the Hardware, the guarantee comes to an end.

No contractual guarantee will apply to spare parts that are not assembled by COUPECO SAS or a third party approved by the latter.

Buyer obligations

To benefit from this guarantee, the Buyer must, without delay, inform COUPECO SAS in writing of the defects that the Buyer attributes to the Hardware and provide all supporting documents to prove this is the case: it must offer COUPECO SAS every facility to observe the defects and offer a remedy.

Duration and starting point of the guarantee

The normal guarantee covers a period of one year starting from the date of delivery.

In the event of a sale of spare parts, the agreement will show the duration of the contractual guarantee granted by COUPECO SAS.

Terms for exercising the guarantee

The agreement defines the terms under which the guarantee is exercised; in the absence of this, the following terms will apply:

during its period of validity, the guarantee obliges COUPECO SAS to replace parts that are recognised as defective after an examination by its technical department, or if it prefers, to repair them free of charge

the guarantee excludes any other service or compensation

repairs under the guarantee are done in the workshops designated by COUPECO SAS, and it is the Buyer's responsibility to send the Hardware to be repaired or the defective parts when the repairs are to take place outside the Buyer's workshops. COUPECO SAS reserves the right to invoice the Buyer for any travel or accommodation expenses of its agents.

Nevertheless, costs of labour associated with the dismantling or reassembly of the parts are borne by COUPECO SAS when these operations are performed by its staff or agents.

Parts that are replaced become COUPECO SAS property once again and must be immediately returned once they have been replaced.

Dispatch costs for Hardware not covered by the guarantee are at the Buyer's expense and risk.

VIII. LIABILITY

Definition of liability

The liability of COUPECO SAS is strictly limited to observance by itself or its subcontractors of expressly agreed contractual specifications.

The liability of COUPECO SAS does not apply to elements integrated by the Buyer to the equipment and where the equipment is integrated to a set.

Limits to liability

The civil liability of COUPECO SAS for all causes except bodily harm and gross negligence is limited to 50% of the pre-tax amount of the paid supply.

The liability of COUPECO SAS is not bound to repair harmful consequences of failures by the Buyer or third parties in relation to execution of the agreement, nor for damages that come from the Buyer's use of technical documents, information or data that come from the Buyer or are imposed by the Buyer.

Under no circumstances shall COUPECO SAS be bound to compensate intangible damages whether direct or indirect, such as operating losses, lost opportunities, commercial prejudice or loss of earnings...

In the case where the planned penalties and compensation have been agreed by common accord, they have the value of a flat rate of compensation and are exclusive to any other sanction or compensation.

Exclusions of liability

The liability of COUPECO SAS for any circumstance foreseen under Article VI.1 of these terms and conditions. It is therefore expressly agreed that each of the cases of non-application of the contractual guarantee also constitutes a case of non-application of the liability of COUPECO SAS.

Implementation of liability

The liability of COUPECO SAS can only be engaged if the Buyer has previously demonstrated the existence of the damage, the existence of failure on the part of COUPECO SAS and the fact that this damage was caused by this failure. These elements can only be established, in the absence of a legal decision that has the force of law, by a previously negotiated and agreed transaction, in compliance with legal recommendations.

COUPECO SAS is not bound to repair the potentially damaging consequences of failures committed by the Buyer or by third parties in relation to execution of the agreement.

The Buyer reserves the right to instigate proceedings and guarantees that its insurers or third parties in contractual agreement with it will waive their right to instigate proceedings against COUPECO SAS or its insurers beyond the limits and exclusions set by these terms and conditions.

IX. FORCE MAJEURE

Neither of the parties to the agreement may be held responsible for a delay or a failure in one of its obligations within the framework of this agreement if this delay or this failure is a direct or indirect effect of a case of force majeure.

There is force majeure when an event that is beyond the control of one party, which could not be reasonably foreseen when the agreement was concluded and therefore could not be avoided using appropriate measures, prevents the execution of an obligation.

Each party shall inform the other party, without delay, of the occurrence of a case of force majeure of which it has become aware and which it feels is of such a nature as to affect execution of the agreement.

If the obstacle is temporary, execution of the obligation is suspended unless the resulting delay justifies termination of the agreement. If the obstacle period exceeds one month, the parties shall come together as soon as possible to examine the change to the agreement in good faith.

If the obstacle is definitive, the agreement is rightfully terminated under the conditions provided for in Articles 1351 and 1351-1 of the Civil Code, should this appear to be the right course to the prevented party.

It is expressly agreed that the following events shall in particular be considered cases of force majeure, without this list being exhaustive:

Occurrence of a natural calamity

Earthquake, storm, fire, flooding...

Armed conflict, war, civil conflict, attacks

Labour disputes, total or partial strike action at COUPECO SAS or the Buyer

Labour disputes, total or partial strike action at suppliers, service provider, transport companies, post offices, public services...

Binding order from public authorities (prohibition on imports, embargo)

Operating accidents, machine breakages, explosion

Supplier lapses or failure

X. UNFORESEEN CIRCUMSTANCES

It is agreed that in the event that a change in circumstances that was unforeseeable at the time of entering into the agreement makes execution of the agreement excessively costly for one of the parties, they can negotiate an amendment to the agreement in good faith. In addition to this, it is agreed that, and this list is not exhaustive, the following events are particularly targeted: variation in the market prices of raw materials, changes to customs charges, changes to exchange rates, changes to laws.

In the event of a refusal or a breakdown in talks, the parties may agree to terminate the agreement, on a date and under conditions that they determine, or by common accord ask a judge to adapt it.

In the absence of an agreement within a reasonable time frame, the judge may, at the request of one of the parties, revise the agreement or terminate it, on a date and under conditions that he or she sets, in accordance with Article 1195 of the Civil Code. In consequence, COUPECO SAS states that it does not accept the risk of such a change in circumstances in advance. No stipulation about a set price or other mention may be interpreted as acceptance of such risk.

XI. TERMINATION

In the event of a serious failure on the part of one of the parties towards an essential obligation and notwithstanding the provisions of Article II.1, the other parties may rightfully break the agreement after notice specifying the alleged failure and the desire to terminate the agreement in virtue of this article has been served and remained unfruitful for 30 days. This provision does not obstruct the right to reparation for the prejudicial effects of the failure that there is partial or total non-execution of the agreement.

Any application of Article 1222 of the Civil Code relating to the faculty of the Buyer to execute the obligation itself, is expressly excluded.

No price reduction sought on the basis of Article 1223 of the Civil Code may be put in motion without prior and express agreement from COUPECO SAS.

XII. MISCELLANEOUS

Confidentiality

The parties reciprocally undertake a general obligation to confidentiality that bears on any spoken or written confidential information, whatever the format (reports of discussions, plans, exchanges of computer data, activities, facilities, projects, know-how, products...) exchanged within the framework of preparing and executing the agreement, except for information which is generally known to the public or which would become public knowledge other than through the fault or the fact of one party or the other.

In consequence, the parties undertake to:

keep all confidential information strictly secret, in particular to not reveal or communicate, in any manner whatsoever, directly or indirectly, all or part of the confidential information to whomsoever, without the prior written authorisation of the other party.

not use all or part of the confidential information for purposes or business other than execution of the agreement

not copy or imitate all or part of the confidential information

The parties undertake to take all necessary measures in order to ensure observance of this obligation to confidentiality, even after its term has expired, and to ensure respect for this from all of their employees. This obligation is an obligation of results. COUPECO SAS retains complete ownership of the intellectual property and the know-how relative to its technical documents, projects, software, design plans and drawings and equipment provided, even in the event of a research agreement between the two parties. Any transfer of intellectual property rights shall be subject to written agreement between the parties.

Waiver

The fact that COUPECO SAS does not rely on any one of the provisions of these terms and conditions cannot be interpreted as preventing it from relying on it at a later stage.

Similarly, should any one of the provisions of these terms and conditions become null and void, this does not affect the validity of the other provisions.

XIII. DISPUTE AND APPLICABLE LAW

The parties undertake to submit to settle any disputes amicably before petitioning the competent court; to do this, they may resort to mediation if necessary, such as Corporate Mediation services. In the absence of an amicable agreement, the commercial court of the jurisdiction of the headquarters of COUPECO SAS is solely competent, no matter what conditions of sale or means of payment, even in the case of introducing third parties or multiple defendants.

French law is the only law applicable to the agreement and its consequences, with the exception of the Vienna Convention of 1980.

Professional terms and conditions filed with the Office of Professional Practice (Bureau des Usages Professionnels) of the Commercial Court of Paris on 27 March 2018 under the number No. D2018032008

General Data Protection Regulation

For any sales contract between the Buyer and the Seller, the Buyer accepts that the information collected (name of use, contact details, names of contacts and other official documents) may be used by the Seller and/or its network of dealers for commercial purposes. The duration of the conservation of this data starts as soon as the Buyer requests the sending of information and documents, such as sales support tools, and the establishment of a sales document, and continues for the entire duration of the partnership between the Buyer and the Seller.

In accordance with the laws "Informatique et Liberté" and "GDPR", the Buyer can exercise his right to rectify or oppose the use of his personal data by contacting the Seller.

Contents

COSMOS 101	4
COSMOS 105T	6
COSMOS 156T	8
COSMOS 310	10
COSMOS 300	12
COSMOS 300D on tractor	14
COSMOS 300DC on front loader	16
COSMOS 400	18
METEOR T90C on front loader	20
METEOR T90C on telescopic loader	22
HYDRAULIC POWER PACK & HOSES KIT	23
HITCHING BRACKET	23
SPARE PARTS	24
CUSTOM-MADE PROJECT	26

*Our prices are exclusive of tax
Departure from Pons (FR-17800, France) - Shipping & packaging in addition*

S.A.S. with a capital of 100 000 € - R.C.S. SAINTES B 401 895 883 – SIRET 401 895 883 00023 – Code A.P.E. 2562B

Cutter cosmos 101



SCAN ME



MADE IN
FRANCE

Multifunctional fruit trees, country hedges

References	COSMOS	Nbr of saw blades- knife plates/diam. (mm)	Cutting length (m)	Cutting height (m)		Carrier's weight (kg)	Machine's weight (kg)
				Vertical	Horizontal		
COS.101.4501.14	COSMOS 101 LAMIER 4500	4 saw blades / Ø500	1.59	5.40	3.80	1500	490
COS.101.5501.14	COSMOS 101 LAMIER 5500	5 saw blades / Ø500	1.95	5.80	3.80	1500	510
COS.101.6501.14	COSMOS 101 LAMIER 6500	6 saw blades / Ø500	2.32	6.12	3.80	2000	530

COSMOS 101

* A hydraulic chassis storage, predisposed to be mounted on a lifting arme category 1, or to receive the hitching bracket between the pruning equipment and the carrier (**hitching bracket NOT supplied**)

* Two arms to position the lamier at the desired offset and height, thanks to the double acting cylinders

* One lamier support for horizontal and vertical adjustment and correction of the lamier position

* A cutting equipment **type 4500 / 5500 / 6500** (see charte above), diameter 500mm:

- > Working on the right of the carrier
- > Equipped of 4 / 5 / 6 saw blades diameter 500mm - 96 teeth -thickness 3mm,
 - ° Cutting capacity with saw blades: - At crossing: Ø80mm, - In full blade: Ø160mm
 - ° Cutting capacity with knife plates: Ø25mm
- > Hydraulic gear motor 14 cm3: ° Double sens of rotation, ° Without pressure limiter
 - ° Flow rate and pressure required: **36 l/min at 140 bar**, ° Rotation speed: 2500 RPM
- > Drive: Transmission belt poly ve 5 grooves - 23 mm wide
- > Fixing at the back by a 50x50mm square tube, > Shoe and protective cover

* One hydraulic kit, composed of:

- > A double pump immersed in the storage
- > A hydraulic block with low speed for movements, and mowing operation in both directions
- > Cylinders equipped of balancing valves
- > A set of supply flexibles for the hydraulic block connected to the storage

* An electric kit, composed of:

- > A control box of the hydraulic block to be positioned in the cab:
 - ° A motor start-up for two directions of rotation
 - ° Three 2 way joystick to control cylinders
 - ° A movement speed selection button (slow/fast)
 - ° An emergency stop
 - ° A protective fuse
 - ° A 2G2.5 power supply cable 3m long with a 3-pin plug
 - ° A 5m long control cable for the hydraulic block

* Tools to maintain and to change cutting equipment

* Triangulation tie rods

* Operation and maintenance manual for the pruning equipment and spare parts manual

Prerequisites on the carrier:

* Back hitch category 1

* Make sure that at 540 rpm PTO, the forward speed of the carrier does not exceed 1 km/h

Prerequisites in the cab:

* 12 V electric supply for the control box

Delivered on a pallet 2800x1300mm full floor – ref. 25.510.070

Accessories		
OPT.JOY	Increase in value if order with joystick	
AD.COS100.03.100	Adaptation interface cat. 2 – 3 pts for Cosmos 101	

Spare parts / Hydraulic power pack / Flexibles kit / Hitching brackets -> see P.23-P.24

Cutter cosmos 105T



SCAN ME



MADE IN
FRANCE

Multifunctional fruit trees, country hedges

References	COSMOS	Nbr of saw blades – knife plates /diam. (mm)	Cutting length (m)	Cutting height (m)		Carrier's weight (kg)	Machine's weight (kg)
				Vertical	Horizontal		
COS.105T.6501	COSMOS 105T LAMIER 6500	6 saw blades / Ø500	2.32	7.55	5.00	3000	650
COS.105T.7501	COSMOS 105T LAMIER 7500	7 saw blades / Ø500	2.69	7.90	5.00	3000	680
COS.105T.3600	COSMOS 105T LAMIER 3600	3 saw blades / Ø600	1.53	6.25	4.85	3000	650

COSMOS 105T

* A chassis with drilled plate, predisposed to be mounted on front mass holder, or to receive a hitching bracket between the pruning equipment and the carrier (**hitching bracket NOT supplied**)

* 1m run first telescopic arm

* A second arm to position the lamier at the desired offset and height, thanks to the double acting cylinders

* One lamier support for horizontal and vertical adjustment and correction of the lamier position

* Working the lamier to the right of the carrier

* A cutting equipment **type LAMIER 500 / LAMIER 600 / Cutter bar** (see chart above)

LAMIER Ø500 mm	LAMIER Ø600 mm
Saw blades or flat plates (interchangeable) Ø500 mm > Cutting capacity with saw blades: ° At crossing: Ø80 mm, ° In full blade: Ø160 mm > Cutting capacity with knife plates: Ø25 mm Hydraulic gear motor with flexible coupling Rotation speed 2500 rpm	Saw blades or flat plates (interchangeable) Ø600 mm > Cutting capacity with saw blades: ° At crossing: Ø80 mm, ° In full blade: Ø200 mm > Cutting capacity with knife plates: Ø25 mm 22 cc hydraulic gear motor with double sens of rotation Rotation speed 2500 rpm

* A hydraulic kit composed of:

> A hydraulic block with low speed for movements and mowing operation in both directions

> A hydraulic block with low speed for movements

> Cylinders equipped of balancing valves

> A hoses set for supplying the hydraulic blocks connected to through-holes on the chassis:

° Male 5/8 BSP for motor supply, ° Male 3/8 BSP for drain, ° Male 1/2 BSP for cylinder block supply

* An electrical kit compose of:

> A control box of the hydraulic block to be positioned in the cab:

° A motor start-up for two directions of rotation ° Four 2-way joysticks for cylinder control

° A movement speed selection button (slow/fast) ° An emergency stop ° A protective fuse

° A 2G2.5 power supply cable 3m long with a 3-pin plug ° A 5m long control cable for the hydraulic block

* Tools to maintain and to change cutting equipment

* Operation and maintenance manual for the pruning equipment and spare parts manual

Does not include:

* The flow regulator, * The hitching between the carrier and the pruning equipment

* Flexibles between the carrier and the pruning equipment, * The hydraulic coupling

Hydraulic prerequisites on the carrier:

* A hydraulic supply simple effect with a continuous flow of **42 l/min at 120 bar / 45 l/min at 170 bar/**

* A direct return drain to the storage (pressure max. drain allowable: 2.5 bar)

* A hydraulic supply simple effect to supply the hydraulic block of the movements: 8 à 10 l/min at 180 bar

Prerequisites in the cab:

* 12 V electric supply for the control box

Delivered on a pallet 2800x1300mm full floor – ref. 25.510.070

Accessories		
KRD.85L.45L	Flow regulator kit + pressure limiter	
01.020.150.17.SP	Tilting Lamier 500mm single blade option – manual adjustment	
OPT.3500.COS105T	Lamier 3500 option for opening	
AD.COS105.01.100	Adaptation interface cat. 2 – 3 pts for Cosmos 105 / 105T	

Spare parts / Hydraulic power pack / Flexibles kit / Hitching brackets -> see P.23-P.24

Cutter cosmos 156T



SCAN ME



MADE IN
FRANCE

Multifunctional : fruit trees

References	COSMOS	Nbr of saw blades – knife plates /diam. (mm)	Cutting length (m)	Cutting height (m)		Carrier's weight (kg)	Machine's weight (kg)
				Vertical	Horizontal		
COS.156T.4600ECO	COSMOS 156T LAMIER 4600	4 saw blades / Ø600	2.00	6.55	4.50	4000	650
COS.156T.5600ECO	COSMOS 156T LAMIER 5600	5 saw blades / Ø600	2.47	7.00	4.55	4000	700

COSMOS 156T

- * A frame with a drilled plate, predisposed for a mounting on a front weight carrier
- * A height-adjustable stand to facilitate mounting and dismounting on the front weight carrier
- * A first telescopic arm with a 1m stroke
- * A second arm allowing to position the cutter bar at the desired offset and height, thanks to double acting cylinders
- * A support piece for the cutter bar allowing the cutter bar to be positioned horizontally or vertically and to correct the position of the cutter bar
- * Working on the right of carrier
- * A cutting equipment **type 4600 / 5600 ECO**, (see chart above), diameter 600 mm:
 - > Equipped with 4 / 5 saw blades diameter 600mm - 96 teeth - thickness 3.5mm,
 - ° Cutting capacity with saw blades: - At crossing: Ø80mm, - In full blade: Ø200mm
 - ° Cutting capacity with knife plates : Ø25mm
 - > Gear hydraulix motor 22 cm3 : ° Double rotation sense, ° Without pressure limiter
 - ° Flow and pressure required: **45 l/min à 170 bar**, ° Speed rotation : 2000 RPM
 - > Training: Double V-belt drive
 - > Fixing at the back by a reversible 70 mm square tube with integrated shoe
- * A hydraulic kit composed of:
 - > A common hydraulic block for the start-up of the lamier with pressure limiter and the control of slow speed movements
 - > Cylinders equipped of balancing valves
 - > A hoses set for supplying the hydraulic blocks connected to through-holes on the chassis:
 - ° Male 5/8 BSP for motor supply, ° Male 3/8 BSP for drain, ° Male ½ BSP for cylinder block supply
- * An electrical kit composed of:
 - > A control box of the hydraulic block to be positioned in the cab:
 - ° A motor start-up in only one sense, ° Four 2-way joysticks for cylinder control
 - ° A movement speed selection button (slow/fast) ° An emergency stop
 - ° A protective fuse in the 3-pin socket
 - ° A 2G2.5 power supply cable 2.50m long with a 3-pin plug ° A hydraulic block control cable 16G1 length 8m
- * Tools to maintain and to change cutting equipment
- * Operation and maintenance manual for the pruning equipment and spare parts manual

Does not include:

- * The flow and/or pression regulator, * The hitching between the carrier and the pruning equipment, * Hoses between the carrier and the pruning equipment
- * The hydraulic coupling

Hydraulic prerequisites on the carrier:

- * A hydraulic supply simple effect with a continuous flow of **45 l/min at 170 bar**
- * A direct return drain to the storage (pressure max. drain allowable: 2.5 bar)
- * A hydraulic supply simple effect to supply the hydraulic block of the movements: 8 à 10 l/min at 180 bar

Prerequisites in the cab:

- * 12 V electric supply for the control box

Accessories		
KRD.85L.45L	Flow regulator kit + pressure limiter	
01.020.161.22.SP	Tilting Lamier 600mm single blade option – manual adjustment	
AD.COS156T.01.100	Hitching bracket cat. 2 – 3 pts for Cosmos 156T	

Spare parts / Hydraulic power pack / Flexibles kit / Hitching brackets -> see P.23-P.24

Cutter cosmos 310



SCAN ME



MADE IN
FRANCE

Special for intensive apple trees

Reference	COSMOS	Cutting length (m)	Carrier's weight (kg)	Machine's weight (kg)
COS.310.BDC.0301	COSMOS 310 Cutter bars 3m + 1m	3.00 + 1.00	minimum 3000	310

COSMOS 310

- * A mechanically welded frame, prepared to receive the bolt-on coupling interface
 - * A horizontal offset slide activated by a double-acting cylinder with a 300mm stroke and adjustment by means of bronze shoes
 - * A cutting bar support that can be tilted +/-20° in relation to the slide by double acting cylinder
 - * A vertical cutter bar support slide, operated by double acting cylinders, stroke 500mm: adjustable by bronze shoes
 - * A cutting equipment **type Barres de coupe 3 m and 1 m** (see chart above):
 - > A single vertical cutter bar with a reinforced moving blade
 - ° Cutting length 3m, ° Cutting capacity: 30mm, ° Drive: with a hydraulic motor
 - > A top cutter bar for trimming tops (« topping »):
 - ° Cutting length 1m, ° Cutting capacity: 20mm, ° Drive: with a hydraulic motor
 - * Top cutterbar tilt adjustment movement by double-acting rack and pinion cylinder, for tilt and position adjustment
 - * Double-acting cylinder retracting movement of the top cutting system to avoid posts
 - * Upper cutterbar safety system with gas struts for return to position
 - * Electro-hydraulic distributor with integrated filter, fixed to the chassis
 - * Hose supply kit ending at 1.50m from the hitching with screwed connections
 - * Single lever control panel to be mounted on the driver's seat:
 - > All movement controls by switches on the machine
 - > Start and stop of the cutting system on the machine
 - > Emergency stop on the machine
 - > Electrical cable between the console and the distributor, length 5m, without plug
 - > Power supply cable to the control panel with 3-pin plug
 - * Hitching bracket 3 points, delivered and installed on the frame
 - * Support legs for vertical storage of the machine
 - * Tools to maintain and to change cutting equipment
 - * Operation and maintenance manual for the pruning equipment and spare parts manual
- Hydraulic prerequisites on the carrier:
- * A double-acting 20 l/min continuous feed

Accessories

106.88.COS310	Added-value for front 3 points mounting	
---------------	---	--

Spare parts / Hydraulic power pack / Flexibles kit / Hitching brackets -> see P.23-P.24

Cutter cosmos 300



SCAN ME



MADE IN
FRANCE

Special fruit hedges, great heights on front loader or mass holder

References	COSMOS	Nbr of saw blades – knife plates /diam. (mm)	Cutting lenght (m)	Carrier's weight (kg)	Machine's weight (kg)
COS.300.4501	COSMOS 300 LAMIER 4500	4 saw blades / Ø500	1.59	3000	490
COS.300.5501	COSMOS 300 LAMIER 5500	5 saw blades / Ø500	1.95	3000	510
COS.300.6501	COSMOS 300 LAMIER 6500	6 saw blades / Ø500	2.32	3000	530
COS.300.7501	COSMOS 300 LAMIER 7500	7 saw blades / Ø500	2.69	3000	550
COS.300.8501	COSMOS 300 LAMIER 8500	8 saw blades / Ø500	3.05	3000	570

COSMOS 300

- * A frame with a drilled plate, prepared to receive the interface between the pruning equipment and the carrier (attachment interface NOT supplied)
- * A horizontal sliding arm on the right of the equipment, to adjust the offset of the bar in relation to the carrier, operated by a double-acting cylinder with a 300 mm stroke
- * A support piece for the lamier to be fixed vertically, on a horizontal pivot, allowing the recovery of the slope, activated by a double-acting cylinder (+/- 15° travel)
- * A cutting equipment **type 4500 / 5500 / 6500 / 7500 / 8500** (see chart above), diameter 500mm : > Working on the right of the carrier
 - > Equipped of 4 / 5 / 6 / 7 / 8 saw blades diameter 500mm - 96 teeth -thickness 3mm,
 - ° Cutting capacity with saw blades: - At crossing: Ø80mm, - In full blade: Ø160mm, ° Cutting capacity with knife plates: Ø25mm
 - > Gear hydraulic motor 11 cm³ : ° Double rotation sense, ° Without pressure limiter,
 - ° Flow and pressure required: **27 l/min at 170 bar**, ° Speed rotation: 2500 RPM
 - > Training: 5 groove poly-Ve belts - 23 mm wide, > Fixed at the back with a 50x50mm square tube, > Protective shoe and housing
- * A hydraulic kit composed of:
 - > A flow control block with pressure limiter for motor protection (only one direction of rotation allowed)
 - > Cylinders equipped with balancing valves
 - > A set of hoses for the cutter motor supply (pressure, return and drain), ending 1.50 m from the frame of the pruning equipment: 5/8" BSP female connectors for motor supply, ° 12L female connector for drain
 - > A set of cylinder supply hoses ending 1.50 m from the pruning equipment frame: ° 10L female couplings
- * Tools to maintain and to change cutting equipment
- * Operation and maintenance manual for the pruning equipment and spare parts manual

Does not include:

- * A hydraulic kit to control the motor of the lamier and cylinders,
- * A supply valve between pressure and return to generate a free wheel and do not stop saw blades abruptly,
- * The hitching bracket between the carrier and the pruning equipment
- * The hoses between the carrier and the pruning equipment, * The hydraulic coupling

Hydraulic prerequisites on the carrier:

- * A big simple effect flow with a continuous flow of **27 l/min at 170 bar**
- * A direct return drain to the tank (pressure max allowed on the drain: 2.5 bar)
- * Two double-acting hydraulic supplies to control the offset and angle correction movements: 8 to 12 l/min at 180 bar

Prerequisites in the cab:

- * A continuous start-up command for the lamier
- * Two commands to activate the double-acting line control for the movements

Accessories		
02.020.DM	Option top tilting lamier 2500 + mechanical release	
03.020.DM	Option top tilting lamier 3500 + mechanical release	
OPT.DEC.MECA	Depreciation for mechanical release	
OPT.DEC.HYD	Added-value for hydraulic release	
COS300.OPT1	Distributor kit with control box, 2SE necessary	
CE.060.104R	Hydraulic power pack 60L single pump 45L - Cooler - Distributor - Housing	
K3F.45L.08MC	Kit 3 hoses lenght 8 m with couplings	
CE.060.206	Hydraulic power pack 60L double pump 45+8L - Cooler	
K4F.4508L.08MC	Kit 4 hoses lenght 8m 45 + 8 L/min (P+p+T+Drain) + 1 set + ½ set of couplings	

Spare parts / Hydraulic power pack / Flexibles kit / Hitching brackets -> see P.23-P.24

Cutter cosmos 300D



SCAN ME



MADE IN
FRANCE

Special "topping" hedges: apple, pear and plum trees on a sledgehammer

Reference	COSMOS	Nbr of saw blades – knife plates /diam. (mm)	Cutting lenght (m)	Cutting height (m)		Carrier's weight (kg)	Machine's weight (kg)	
				Vertical	Horizontal			
COS.300D.2525	COSMOS 300 LAMIERES 2500 + 2500	2 saw blades / Ø500 + 2 saw blades / Ø500	0.85 + 0.85	Contact us				

COSMOS 300D on tractor

- * A welded frame predisposed for coupling to the tractor's front 3-point linkage (CAT II). Predisposition for fixing guy wires (not supplied) to stiffen the assembly.
- * A vertical slide with a stroke of 1.00 m for the positioning of the cutter bars in height, activated by a double-acting cylinder.
- * Two offset slides (one on the right and one on the left), stroke 400 mm, operated by a double acting cylinder.
- * A flow divider to synchronise the movements of the horizontal slides.
- * A support piece for the lamier on each side, pivoting at the end of the slides, each actuated by a double acting cylinder: angular travel 150°.
- * A mechanical release safety device by spring retraction on each of the lamellas:
 - > Mechanical sensor adjustable in depth
- * Two cutting equipments **types 2500**, (see chart above), diameter 500 mm, fixed at the end:
 - > Working on the right of the carrier
 - > Equipped with 2 saw blades diameter 500mm - 96 teeth - thickness 3mm,
 - ° Cutting capacity with saw blades: - At crossing: Ø80mm, - In full blade: Ø160mm, ° Cutting capacity with knife plates: Ø25mm
 - > Gear hydraulic motor 11 cm³ : ° Double rotation sense, ° Without pressure limiter
 - Flow and pressure required: **27 l/min at 170 bar**, ° Speed rotation : 2500 RPM
 - > Training: 5 groove poly-Ve belts - 23 mm wide
- * Various thread lifters on the high points of the machine
- * Removal stand kit
- * A hydraulic kit composed of :
 - > 2 cutters in series, one direction of rotation, pressure limiter
 - > A priority flow divider for feeding the release cylinders
- A priority flow divider for the supply of the release cylinders
- * Supply hoses ending on a bulkhead plate with screwed connections.
- * Tools to maintain and to change cutting equipment
- * Operation and maintenance manual for the pruning equipment and spare parts manual

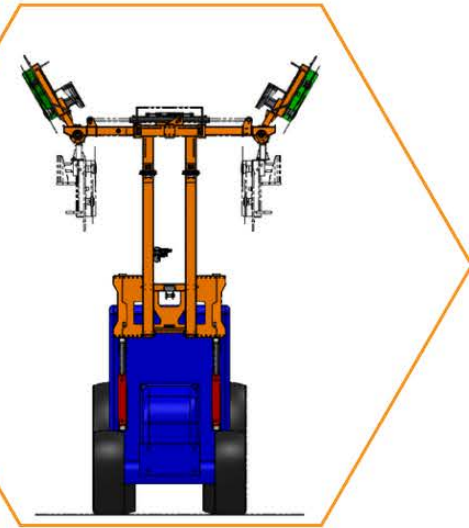
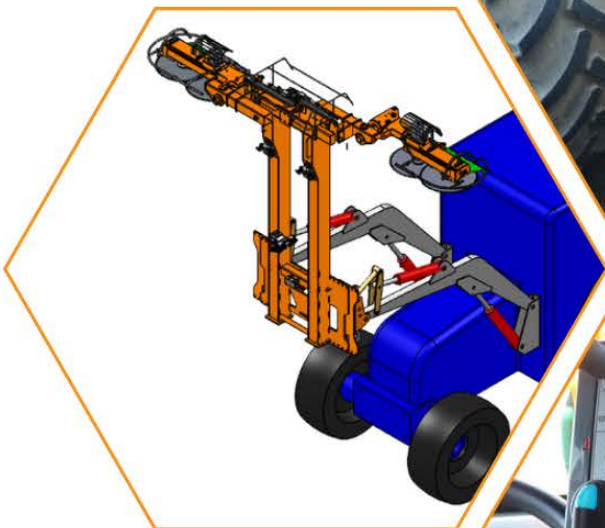
Hydraulic prerequisites on the carrier:

- * A hydraulic simple effect flow with a continuous flow of **27 l/min at 170 bar**
- * A direct return drain to the tank (pressure max allowed on the drain: 2.5 bar)
- * Two double-acting hydraulic supplies to control the offset and angle correction movements: 8 to 12 l/min at 180 bar

Accessories		
PLUS.VAL.LAM3500	Added-value for 2x Lamiers 3500	
OPT.DEC.MECA	Depreciation for mechanical release	
K4F.4508L.08MC	Kit 4 hoses length 8m 45 + 8 L/min (P+p+T+Drain) + 1 set + ½ set of couplings	

Spare parts / Hydraulic power pack / Flexibles kit / Hitching brackets -> see P.23-P.24

Cutter cosmos 300DC



SCAN ME



MADE IN
FRANCE

Special "topping" hedges: apple, pear and plum trees on a sledgehammer

Reference	COSMOS	Nbr of saw blades – knife plates /diam. (mm)	Cutting lenght (m)	Cutting height (m)		Carrier's weight (kg)	Machine's weight (kg)	
				Vertical	Horizontal			
COS.300DC.2525	COSMOS 300 LAMIERES 2500 + 2500	2 saw blades / Ø500 + 2 saw blades / Ø500	0.85 + 0.85	Contact us				

COSMOS 300DC on front loader

- * A welded frame prepared for GIANT or KRAMER interface mounting (not supplied)
- * Two offset slides (one on the right and one on the left), stroke 400 mm, operated by a double acting cylinder.
- * A flow divider to synchronise the movements of the horizontal slides.
- * A support piece for the lamier on each side, pivoting at the end of the slides, each actuated by a double-acting cylinder: angular travel 150°.
- * A mechanical release safety device by spring retraction on each of the bars:
 - > Mechanical sensor adjustable in depth
- * Two cutting equipments **types 2500**, (see chart above), diameter 500 mm, fixed at the end:
 - > Working on the right of the carrier
 - > Equipped of 2 saw blades diameter 500mm - 96 teeth - thickness 3mm,
 - ° Cutting capacity with saw blades: - At crossing: Ø80mm, - In full blade: Ø160mm, ° Cutting capacity with knife plates: Ø25mm
 - > Gear hydraulic motor 11 cm³: ° Double rotation sense, ° Without pressure limiter
 - ° Flow and pressure required: **27 l/min at 170 bar**, ° Speed rotation: 2500 RPM
 - > Training: 5 groove poly-Ve belts - 23 mm wide
- * Various thread lifters on the high points of the machine
- * Removal stand kit
- * A hydraulic kit composed of:
 - > A hydraulic distributor block allowing two lamiers supply in serie, only one rotation sense, pressure limiter
 - > A hydraulic distributor block allowing different cylinders supply
- * Supply hoses ending on a bulkhead plate with screw connections.
- * Tools to maintain and to change cutting equipment
- * Operation and maintenance manual for the pruning equipment and spare parts manual

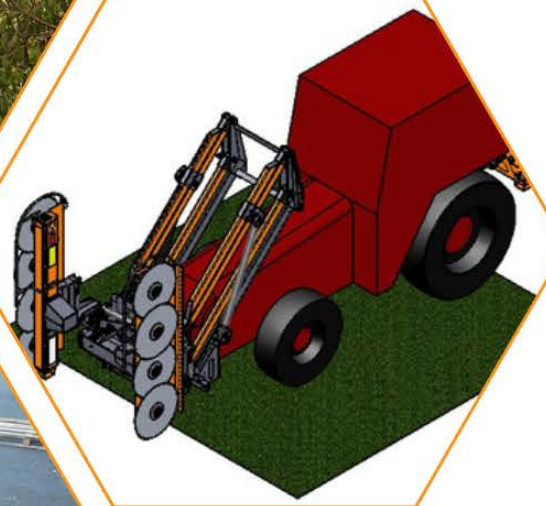
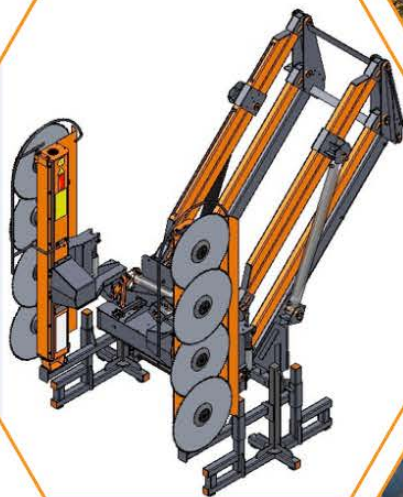
Hydraulic prerequisites on carrier:

- * A hydraulic simple effect flow with a continuous flow of **27 l/min at 170 bar**
- * A direct return drain to the tank (pressure max allowed on the drain: 2.5 bar)
- * Two double-acting hydraulic supplies to control the offset and angle correction movements: 8 to 12 l/min at 180 bar

Accessories		
PLUS.VAL.LAM3500	Added-value for 2x Lamiers 3500	
OPT.DEC.MECA	Depreciation for mechanical release	
K4F.4508L.08MC	Kit 4 hoses length 8m 45 + 8 L/min (P+p+T+Drain) + 1 set + ½ set of couplings	

Spare parts / Hydraulic power pack / Flexibles kit / Hitching brackets -> see P.23-P.24

Cutter cosmos 400



SCAN ME



MADE IN
FRANCE

Special nectarine trees

Reference	COSMOS	Nbr of saw blades – knife plates /diam. (mm)	Cutting lenght (m)	Cutting height (m)		Carrier's weight (kg)	Machine's weight (kg)	
				Vertical	Horizontal			
COS.400.4600	COSMOS 400 2x LAMIERES 4600	2x 4 saw blades / Ø600	2.00	Contact us				

COSMOS 400

- * A frame with holes to be bolted on the front weight carrier of the tractor (holes to be raised) and to be stiffened with tie rods (not supplied) at the level of the foot of the cab,
- * A system of arms with a parallelogram for adjusting the height of pruning, operated by a double-acting cylinder,
- * A horizontal slide on each side, operated by two double-acting cylinders with a 600 mm stroke,
- * Each cutter bar is on a pivot to position horizontally +45° in the V or vertically -15°,
- * Mechanical retraction, lockable on both bars,
- * 2 lamiers type 4600: * Equipped de 4 saw blades diameter 600 mm - 96 lying teeth - thickness 3.5 mm,
> Cutting capacity with saw blades: ° At crossing: Ø80 mm, ° In full blade: Ø200 mm, > Cutting capacity with knife plates: Ø25 mm,
- * Gear hydraulic motor 22 cm³,
> Without pressure limiter, > Flow and pressure required : **45 l/min at 170 bar**, > Speed rotation: 2000 RPM, > Angled ¾ gas flanges for engine supply,
- > ¼ gas drain port,
- * Training: > PolyV belt drive 10 grooves - 47 mm wide,
- * Protective shoe and housing,
- * A hydraulic kit composed of:
 - > A hydraulic block for simultaneous start-up of both lamiers in one sens of rotation, with pressure limiter to protect each motor,
 - > A hydraulic block with slow speed for the movement control,
 - > Cylinders equipped with balancing valves,
 - > A set of hydraulic block supply hoses connected to bulkheads on the chassis,
- * An electric kit composed of:
 - > A control box for the hydraulic block to be positioned in the cab:
 - > A single direction motor start-up with validation,
 - > Four 2-way joysticks to control the cylinders,
 - > A speed selection button for movements (slow/fast),
 - > An emergency stop,
 - > A protective fuse,
 - > A socket for the connection of the cooler of the hydraulic power plant,
 - > A power cable 2G2.5 Lg 3 m. with 3-pin plug,
 - > A control cable for the hydraulic block, length 5 m with plug,
- * Tools to maintain and to change cutting equipment
- * Operation and maintenance manual for the pruning equipment and spare parts manual

Does not include:

- * The flow regulator, * The tie rods and the interface between the carrier and the pruning equipment, * The hoses between the carrier and the pruning equipment, * The hydraulic couplers, * The cable and the electrical plugs between the pruning equipment and the cabin, * The net lifters.

Hydraulic prerequisites on the carrier:

- * A hydraulic simple effect flow with a continuous flow of **45 l/min at 170 bar**
- * A direct return drain to the tank (pressure max allowed on the drain: 2.5 bar)
- * Two double-acting hydraulic supplies to control the offset and angle correction movements: 8 to 12 l/min at 180 bar

Prerequisites in the cab:

- * A continuous lamier start-up control, * A control to activate the continuous hydraulic supply of the hydraulic movement distributor, * A 12V power supply for the control box.

Accessories		
OPT.DEC.MECA	Depreciation for mechanical release	
CE.110.22.08.R	Hydraulic power pack 3 pts – 110 L pump 22cc + 8cc - Cooler	
K4F.4508L.08MC	Kit 4 hoses length 8m 45 + 8 L/min (P+p+T+Drain) + 1 set + ½ set of couplings	

Spare parts / Hydraulic power pack / Flexibles kit / Hitching brackets -> see P.23-P.24

METEOR

T90C on front loader



SCAN ME



MADE IN
FRANCE

Special walnut and hazelnut Mounting on front loader

References	METEOR	Nbr of saw blades – knife plates / diam. (mm)	Cutting capacity (mm)	Cutting length (m)	Weight (kg) Without hitching
MT90C.3600	T90C LAMIER 3600	3 saw blades / Ø600	Ø200/Ø25	1.53	460
MT90C.4600	T90C LAMIER 4600	4 saw blades / Ø600	Ø200/Ø25	2.00	500

METEOR T90C on front loader

- * Chassis with a pierced plate, predisposed to receive the hitching bracket between the pruning equipment and the front loader (**Hitching NOT included**)
- * Horizontally offset arm to the right (or left according to the mounting) of the equipment, to fix the Lamier offset according to the carrier, operated by a double effect cylinder stroke 1000 mm

> In vertical position, the Lamier is at an adjustable offset between 1.15 m to 2.15 m relative to the center of the axis of the carrier

Work on the left or on the right has to be precised at order

- * A Lamier support piece, on a horizontal pivot, allowing to be positioned vertical or horizontal, operated by a double effect cylinder (110° deflection)
- * Cutting equipment **type 3600 / 4600** diameter 600mm:
 - > Equipped of 3 / 4 saw blades diameter 600mm - 96 teeth - thickness 3.5mm
 - > Gear hydraulic motor 22 cm³ : ° Double rotation sense, ° Without pressure limiter
 - ° Flow and pressure required: **45 l/min at 170 bar**, ° Rotation speed: 2000 RPM
 - > Training: 10 grooves PolyVé transmission belt - 47 mm width
 - > Fixing on the back by a square tube support 100x100mm, * Shoe and protection cover
- * An **hydraulic kit** composed of:
 - > A flow regulator with pressure limiter to protect the motor (only one rotation sense allowed)
 - > A function selector predisposed on the chassis, for the control of the cylinder to be supplied (12 V supply)
 - > All cylinder equipped with balancing valve
 - > A supply flexibles kit of the Lamier motor (pressure, return and drain), ending at 1.50 m of the pruning equipment chassis: ° Female connectors 5/8" BSP for the motor supply, ° Female connector 12L for the drain
 - > A supply flexibles kit for the cylinders ending at 1.50 m from the pruning equipment: ° Female connectors 10L
- * An **electrical kit** composed of:
 - > A control panel of the selector to be positioned in the cabin, with an electrical cable 6 m with plugs to be positioned on the carrier
 - > Electrical cable with plugs, for the electrical supply of the selector ending at 1.50 m of the pruning equipment chassis
- * Tools to maintain and to change cutting equipment
- * Operation and maintenance manual for the pruning equipment and spare parts manual

Does not include:

- * An electrical kit for controlling the Lamier motor and the cylinder, * A supply valve between pressure and return to generate a freewheel and not abruptly stop the saw blade, * The hitching bracket between the front loader and the pruning equipment, * The flexibles between the carrier and the pruning equipment, * The hydraulic couplers

Hydraulic prerequisites on the tractor:

- * Continuous hydraulic oil flow simple effect at the end of the boom of **45 l/min at 170 bar**
- * This flow must be constant, regardless of the movements of the carrier, and at a forward speed less than 1 km/h
- * Drain to direct return to tank (max. allowable pressure on the drain: 2.5 bar)
- * Hydraulic supply double effect for piloting the movements of the pruning equipment: 4 to 10 l/min at 180 bar

Prerequisites in the cab:

- * A continuous start up button for the Lamier
- * A command to activate the piloting of the line double effect for the movements
- * Electrical supply 12 V

Delivered on a pallet 2250x1000mm full floor – ref. 25.510.056

Accessories		
MT90.R02.650C	Safety break away	
OPT.3DE	Reduction 3DE available	
CE.060.104R	Power pack 60L simple pump flow rate 45L – Cooler – Distributor - Box	
K3F.45L.09MC	Kit 3 flexibles length 9 m with couplers	
K4F.4508L.08M	Kit 4 flexibles length 8 m with a sets of 5 couplers, for a flow rate 45L + 8L	
K5F.4508L.08M	Kit 5 flexibles length 8 m with a sets of 5 couplers, for a flow rate 45L + 8L	
COS.3M1.EU	Europe hitching bracket for Meteor T90C	
COS.FAU.F20	Faucheux F20 hitching bracket for Meteor T90C	
COS.MX.65	MX hitching bracket for Meteor T90C	

Spare parts / Hydraulic power pack / Flexibles kit / Hitching brackets -> see P.23-P.24

METEOR

T90C on telescopic



SCAN ME



MADE IN
FRANCE

Special walnut and hazelnut Mounting on telescopic loader

References	METEOR	Nbr of saw blades – knife plates / diam. (mm)	Cutting capacity (mm)	Cutting length (m)	Weight (kg) Without hitching
MT90C.3600G-1	T90C LAMIER 3600 + kit hydr.	3 saw blades / Ø600	Ø200/Ø25	1.53	420
MT90C.4600G-1	T90C LAMIER 4600 + kit hydr.	4 saw blades / Ø600	Ø200/Ø25	2.00	460

METEOR T90C on telescopic loader

- * Chassis with a pierced plate, predisposed to receive the hitching bracket between the pruning equipment and the front loader (**Hitching NOT included**)
- * Horizontally offset arm to the left (or right according to the mounting) of the equipment, to fix the Lamier offset according to the carrier, operated by a double effect cylinder stroke 1000 mm

> In vertical position, the Lamier is at an adjustable offset between 1.15 m to 2.15 m relative to the center of the axis of the carrier

Work on the left or on the right has to be precised at order

- * A Lamier support piece, on a horizontal pivot, allowing to be positioned vertical or horizontal, operated by a double effect cylinder (110° deflection)
- * Cutting equipment **type 3600 / 4600** diameter 600mm:
 - > Work at the Left of the carrier, > Equiped of 3 / 4 saw blades diameter 600mm - 96 teeth - thickness 3.5mm
 - > Gear hydraulic motor 22 cm3: ° Double rotation sense, ° Without pressure limiter
 - ° Flow and pressure required: **45 l/min at 170 bar**, ° Rotation speed: 2000 RPM
 - > Training: 10 grooves PolyVé transmission belt - 47 mm width
 - > Fixing on the back by a square tube support 100x100mm, * Shoe and protection cover

* Hydraulic kit composed of:

- > An hydraulic block requiring simple effect and allowing:
 - ° The Lamier start-up in only one sens, ° Freewheeling when the Lamier stops and thus not stopping the blades abruptly, ° The cylinder selection to operate with, ° Displacement in both directions of the selected cylinder
 - > The cylinders equipped with balancing valve
 - > A supply flexibles kit of the Lamier motor (pressure, return and drain), ending at 1.50 m of the pruning equipment chassis: ° Female connectors 5/8" BSP for the motor supply, ° Female connector 12L for the drain

* Electrical kit composed of:

- > A control panel of the distributor block to be positioned in the cabin, with an electrical cable 6 m with plugs to be positionned on the carrier:
 - ° A motor start-up simple sens, ° Two 2-way joysticks for the control of the cylinders, ° An emergency stop
 - One protective fuse, ° One power supply cable 2G2.5 lenght 2m with 3-pin plug, ° One control cable 12G1 distributor, without plug, lenght 3m
- > A cable without plug, for the power supply of the distributor block ending at 1.50 m from the pruning equipment chassis

* Tools to maintain and to change cutting equipment

* Operation and maintenance manual for the pruning equipment and spare parts manual

Does not include:

- * An electrical kit between the cabin and the pruning equipment, * The hitching bracket between the carrier and the pruning equipment, * The hydraulic couplers

Hydraulic prerequisites on the telescopic:

- * Continuous hydraulic oil flow simple effect at the end of the boom of **45 l/min at 170 bar for the Lamier (+10 l/min for the cylinder)**
- * This flow must be constant, regardless of the movements of the carrier, and at a forward speed less than 1 km/h
- * Drain to direct return to tank (max. allowable pressure on the drain: 2.5 bar)

Prerequisites in the cab:

- * A continuous start-up button of the flow
- * An electrical cable 12G1 positioned on the arm for the connection between the control panel in cabin and the equipment at the end of the arm
- * Electrical supply 12 V for the control panel

Delivered on a pallet 2250x1000 full floor – ref. 25.510.056

Accessories

MT90.R02.650C	Safety break away
OPT.BLUETOOTH	Increase in value for Bluetooth box
KENEH.12.10.07M	Complete kit electric reel and drain reel 7M
KENEH.12.10.11M	Complete kit electric reel and drain reel 11M
KENHG.010.007	Complete kit drain reel 7M
KENHG.010.011	Complete kit drain reel 11M
KENE.02.07M	Electrical cable reel kit 7M
KENE.02.11M	Electrical cable reel kit 11M
KCS.012.012	Spiral cord electrical kit

Spare parts / Hydraulic power pack / Flexibles kit / Hitching brackets -> see P.23-P.24

HYDRAULIC POWER PACK & HOSES KIT

CE.060.104R	HYDRAULIC POWER PACK 60 L SIMPLE PUMP WITH FLOW 45 L/min, COOLER, DISTRIBUTOR, BOX
K3F.45L.08MC	KIT 3 HOSES LENGTH 8 M WITH A SET OF COUPLINGS ON THE SIDE OF THE MACHINE AND A ½ SET OF COUPLINGS CENTRAL SIDE
CE.060.206	HYDRAULIC POWER PACK 60 L SIMPLE PUMP WITH FLOW 45 L/min, COOLER, A ½ SET OF COUPLINGS
K4F.4508L.08MC	KIT 4 HOSES LENGTH 8 M WITH A SET OF COUPLINGS ON THE SIDE OF THE MACHINE AND A ½ SET OF COUPLINGS CENTRAL SIDE
RE.060.05.100	HITCHING CAT.3 FOR HYDRAULIC POWER PACK <i>To be ordered in case of mounting a hydraulic power pack on a lift AR CAT.3</i>

HITCHING BRACKET

For front loader and telescopic loader mounting

BOCAT	MT90R.BOB.01.010	BOBCAT HITCHING BRACKET	
CLAAS	MT90R.CLASS.01.010	CLAAS HITCHING BRACKET	
COCHET	INT.MD.COCX54	COCHET CX54 HITCHING BRACKET	
D.FAHR	MT90R.DFAHR	JLG/DEUTZ FAHR HITCHING BRACKET	
DIECI	MT90R.DIE.01.010	DIECI HITCHING BRACKET	
EUROPE	COS.3M1.EU	EUROPE HITCHING BRACKET ONLY ON MT90C	
EUROPE	MT90R.EU.01.010	EUROPE HITCHING BRACKET ONLY ON MT90R	
FAUCHEUX	COS.FAU.F20	FAUCHEUX HITCHING BRACKET ONLY ON MT90C	
FAUCHEUX	MT90R.FX.01.010	FAUCHEUX HITCHING BRACKET ONLY ON MT90R	
JCB	MT90R.JCB.01.010	JCB Q-FIT HITCHING BRACKET	
JCB	MT90R.JCB.01.020	JCB TOOL CARRIER HITCHING BRACKET	
JCB	MT90R.MATBRO.000	JCB MATBRO HITCHING BRACKET	
KRAMER	MT90r.KRAM.01.010	KRAMER HITCHING BRACKET	
MANITOU	MT90R.MAN.01.010	MANITOU HITCHING BRACKET	
MERLO	MT90R.MER.01.010	MERLO HITCHING BRACKET	
MX	COS.MX.65	MX HITCHING BRACKET ONLY ON MT90C	
MX	MT90R.MX.01.010	MX HITCHING BRACKET ONLY ON MT90R	
N.HOLLAND	MT90R.NWH.01.010	NEW HOLLAND HITCHING BRACKET	

SPARE PARTS

LAMIER Ø500

30.510.250.PM	PLATE 500 COMPLETE WITH 2 STRAIGHT KNIVES AND BOLTS > FIRST ASSEMBLY	
30.510.250	PLATE 500 COMPLETE WITH 2 STRAIGHT KNIVES AND BOLTS	
30.702.451	2 STRAIGHT KNIVES KIT 2C 2T LG168 WITH COMPLETE BOLTS	
35.600.601	SAW BLADES DIAM. 500 - 96 TEETH – THICKNESS 3MM - AL 45	
30.510.260	1 SAW BLADE Ø500 KIT WITH BLADE AND FLASK (unitary)	
21.750.501	BELT	

LAMIER Ø600

14.500.704C	COMPLETE REINFORCED 600/650 PLATE WITH 2 SHORT KNIVES AND BOLTS	
30.702.453C	2 STRAIGHT KNIVES KIT 2C 2T LG116 WITH COMPLETE BOLTS	
35.600.609	SAW BLADES DIAM. 600 - 96 TEETH – THICKNESS 3.5MM	
21.750.505	10 GROOVE BELT	



CUSTOM-MADE



At Coup'Eco, we are listening to your desires and your projects always with the idea to meet your needs. That's why we also make custom-made products.



Before to study your request, please specify all informations indicated just below:

TRACTOR

- Type:
- Weight:
- Width:
- 2 or 4 drive wheels:

MACHINE POSITION

- Front or rear:
- 3-point hitch category: ☐ 1 ☐ 2 ☐ 3
- Mass holder (interface to be realised by the concessionnaire) : ☐ Yes ☐ No

If yes,

> Height of the middle of the mass holder:

HYDRAULIC

Tractor

- Number of available flows (with their location on the tractor) ☐ 1 ☐ 2 ☐ 3 ☐ 4

> Flow:

> Pressure:

> Simple or double effect:

> Distributor centered in H or not:

> Presence of a drain : ☐ Yes ☐ No

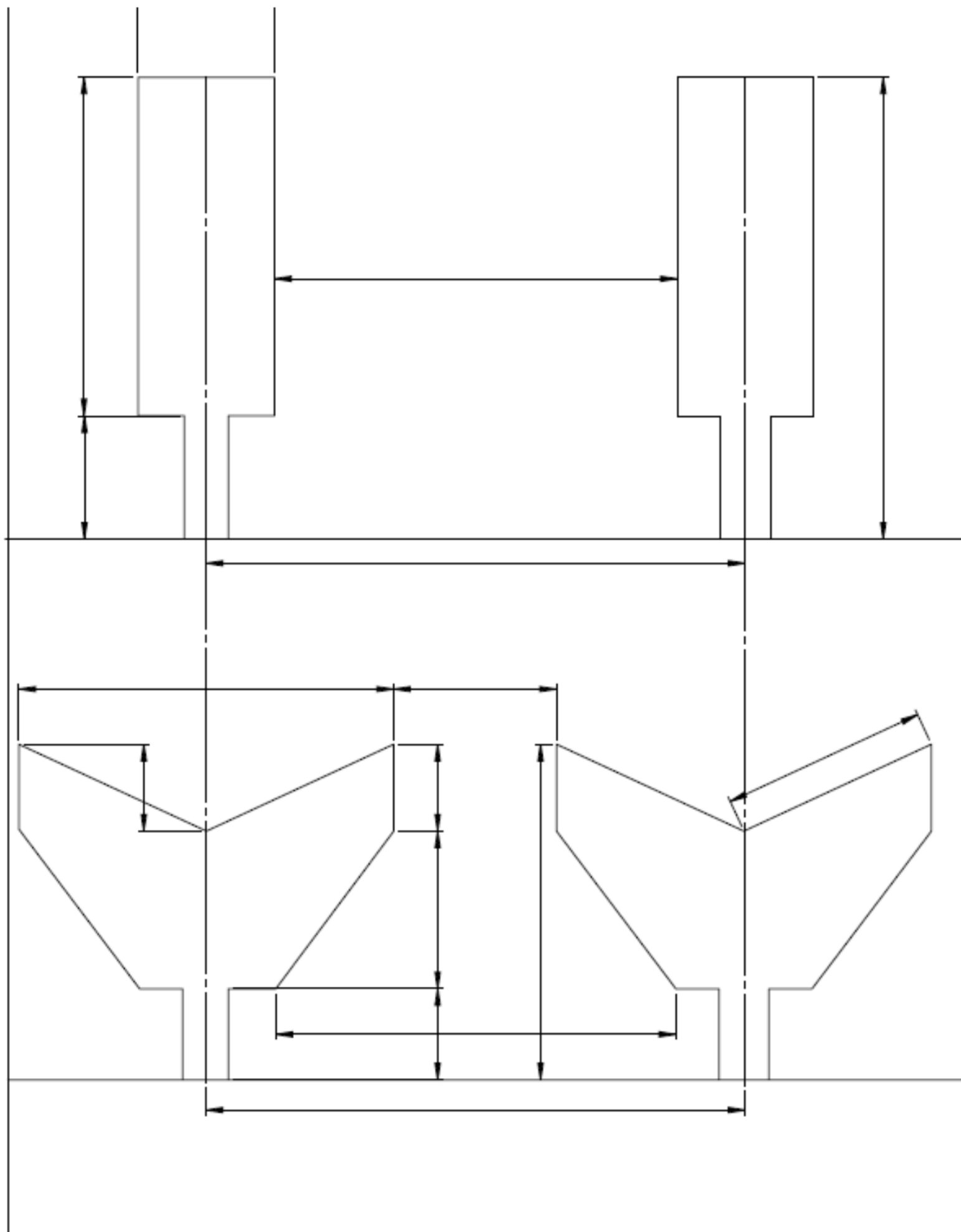
Coup'Eco hydraulic power pack

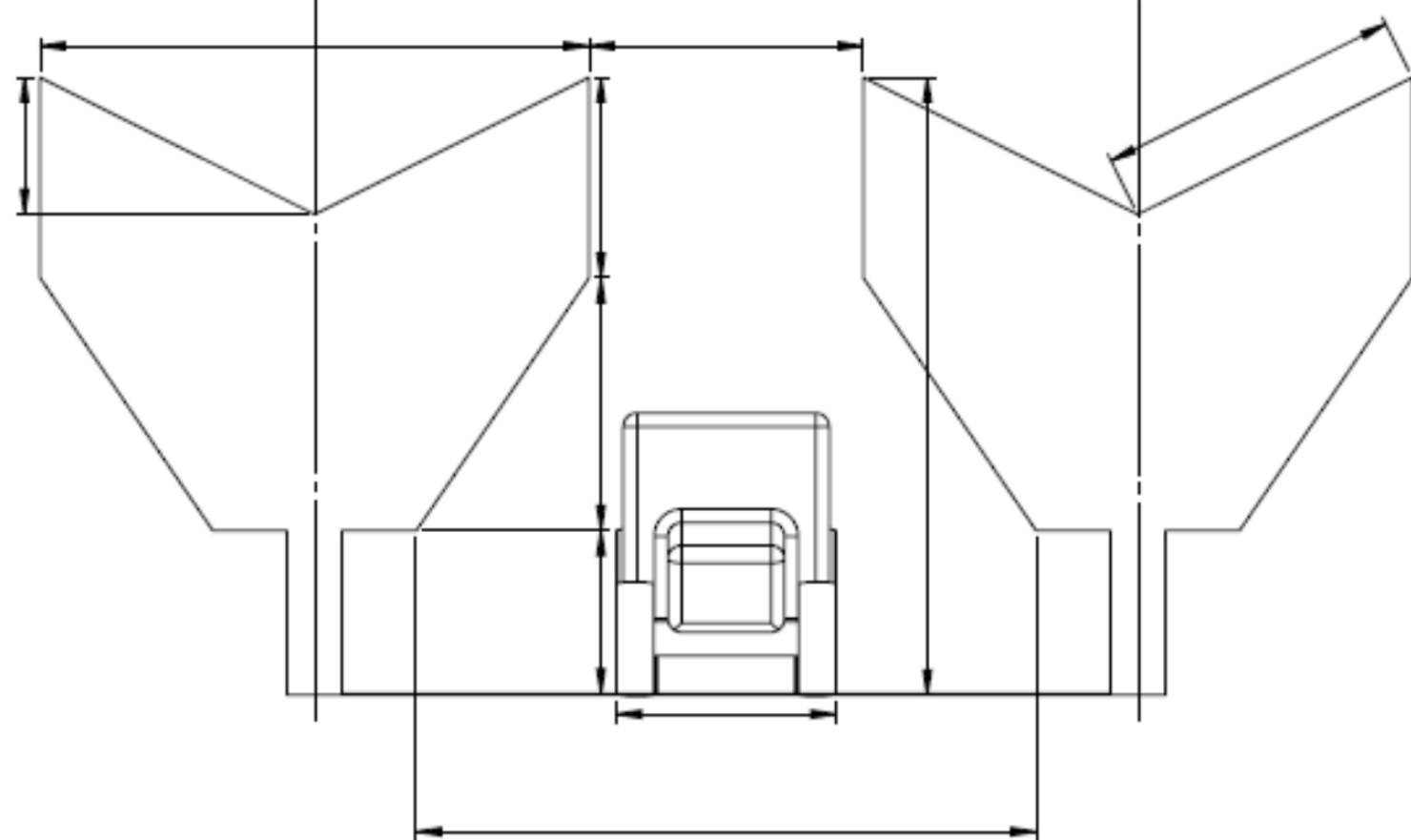
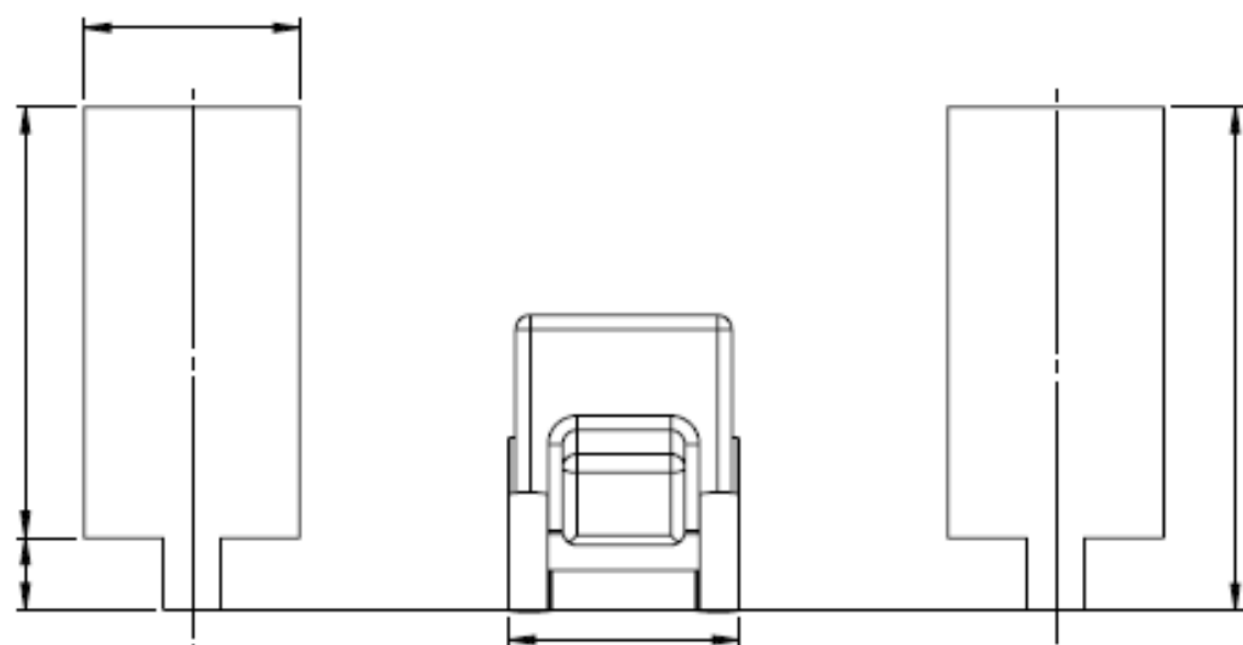
☐ Yes ☐ No

Coup'Eco hoses kit

☐ Yes ☐ No

To finish, please write the dimensions taken in the orchard on the plan below:





NOTES

~ 29 ~

NOTES

~ 30 ~



Contact details:

ZI du Chail - 17800 PONS - France

Tel. +33 (0)5 46 96 25 50

coupeco@coupeco.com

www.coupeco.com



Video of the range



2023

