

PRICE LIST

GALAX-CELEST-COMETH RANGES

Pruning of ornamental hedges

DEPARTURE FROM PONS (F-17800)

RÉF. N° EV.02.23

Validity for DELIVERY before
the 31/07/2023

 YouTube



2023



Terms & Conditions of Export Sales

I. GENERAL INFORMATION

1. Purpose and scope of application of the general terms and conditions

These professional terms and conditions of sale frame the professional usages for activities that are brought together under the union of equipment for construction, infrastructure, steelworks and handling.

They are in compliance with the rules of law for contracts and competition law and are filed with the Office of Practices (Bureau des usages) of the registry of the Commercial Court of Paris.

In accordance with Article L441-6 of the Commercial Code, they constitute "the single basis for sales negotiations". Therefore, they apply to all COUPECO SAS business and form the legal basis for an agreement, unless there are special conditions. Any eventual Buyer conditions of purchase have the status of a proposal. These terms and conditions take precedence over all contrary provisions formulated in any way by the Buyer if COUPECO SAS has been notified of the acceptance of the Buyer in these terms and conditions in favour of the Buyer is "justification" for compensation. Any order or acceptance of an offer from COUPECO SAS implies acceptance of these terms and condition unless there are negotiations between the parties.

These terms and conditions apply to the sale of Hardware or Equipment and associated services. They do not apply to service provision when said services are the main purpose of the agreement.

Under these terms and conditions "written" means any document established by any means, in particular in paper or electronic format.

2. Concluding the agreement

In the absence of special mention, the COUPECO SAS offer will be valid for one month. Unless specifically indicated by COUPECO SAS, this period of one month will be deemed to constitute the "set deadline" under the meaning of Article 1117 of the Civil Code.

The sales agreement is only complete after written acceptance from COUPECO SAS of the Buyer's order.

In the event of sales of spare parts, the dispatch of the parts by COUPECO SAS is deemed to constitute acceptance of the Buyer's order.

Any change to the agreement requested by the Buyer is subject to express acceptance from COUPECO SAS.

The order is the expression of the Buyer's irrevocable consent; the Buyer therefore cannot cancel it, unless there is express prior agreement from COUPECO SAS. In this case, the Buyer will compensate COUPECO SAS for all expenses engaged and for all the direct and indirect consequences that result from this. Furthermore, the deposit that has already been paid remains acquired by COUPECO SAS. Unless there is a contrary provision, the characteristics given in the catalogues, brochures and any COUPECO SAS publicity document are purely for indicative purposes.

COUPECO SAS reserves the possibility to make any changes that it deems appropriate to its models even after acceptance of orders. These changes should not alter the essential characteristics and performance of the Hardware and Equipment on sale.

3. Compliance and technical regulations

The products delivered comply with technical regulations that apply and technical standards to which COUPECO SAS has explicitly stated the product complies.

When COUPECO SAS is the manufacturer of the equipment, it is responsible for the technical regulations applicable to the design and initial marketing of said equipment. The Buyer is responsible for the regulations applicable to equipment commissioning and use.

The offer integrates regulatory requirements and more generally safety requirements known to COUPECO SAS at the time it is established. In the event of a change in regulatory requirements between the presentation of the offer and full execution of the agreement, updated compliance is not covered by COUPECO SAS, and the Buyer will be sent an additional offer to this effect.

Similarly, if during the same period COUPECO SAS receives information which is not available to it at the time of establishing the offer (comprehensive plan of the facility, accessories...) the changes or additional equipment made necessary in consequence will be subject to a complementary offer.

COUPECO SAS takes responsibility for the regulatory compliance of the equipment components.

Any change to the equipment that is not authorised by COUPECO SAS, carried out by the Buyer or a third party that is not accredited by COUPECO SAS, will lead to the cancellation of the CE Declaration of Conformity provided by COUPECO SAS. Replacement of a part that has repercussions on safety by a non-original part will also lead to the cancellation of said Declaration.

COUPECO SAS shall provide documents that contain service instructions (such as instruction manuals, user guides...). Users shall familiarise themselves with these before commissioning.

The Buyer is responsible for operating the product under foreseeable conditions of use and in application of safety and environmental laws in force at the user site as well as sound professional practice.

In particular, it is the Buyer's responsibility to choose a product that matches its technical requirements and its operational process if necessary, and to confirm with COUPECO SAS that the product is suitable for the planned application.

II. DELIVERY

1. Terms of delivery

Delivery deadlines begin from the date on which receipt of the order is acknowledged, subject to receiving all the documents to be provided by the Buyer in order to begin executing the agreement and the payment of any eventual planned down payment.

Where the destination of the Hardware and the terms of delivery is directed to take place in the COUPECO SAS factories or workshops unless otherwise provided for.

It takes place through simple notice of availability notified by any means. Direct handover of the Hardware to the Buyer, or Delivery of the Hardware to COUPECO SAS factories or workshops to a dispatch or transport company designated by the Buyer, or, failing this, by COUPECO SAS may take the place of such notice.

The Buyer must take possession of the hardware within ten days following the notification of availability.

If the Buyer does not take the Hardware at the agreed place and time, and on condition to the delay not being attributable to an act or omission on the part of COUPECO SAS, it is bound to carry out the payments provided for in the agreement as the delivery is deemed to have been carried out. In this case, COUPECO SAS can choose to provide storage at the Buyer's expense and risk, once the Hardware has been individualised, or to await application of Article III.

Under no circumstances may an extension to the delivery date indicated attributable to COUPECO SAS lead to a cancellation of the order, payment of damages and interest or any other sort of penalty.

2. Receipt

Should the Buyer not make a written claim within eight days following the date of delivery, the Hardware and Equipment are deemed to have been received.

Any claim related to transport should be made within a period of three days (refer to Article IV).

III. RESERVATION OF OWNERSHIP AND TRANSFER OF RISKS

COUPECO SAS retains full ownership of goods that are the purpose of the agreement until full payment of the price

(principal and incidentals), in compliance with Articles 2367 and following of the Civil Code and L. 624-16 and following of the Commercial Code.

From the moment of delivery, the Buyer becomes responsible for any damage which these goods may be subjected to or cause for any reason whatsoever.

Until full payment, the goods may not be resold or transformed with prior agreement from COUPECO SAS.

However, in the event of resale, COUPECO SAS may operate its resale rights by claiming the debt directly from the end customer.

IV. TRANSPORT AND INSURANCE

Transport, insurance, customs, handling and transport to site operations are at the expense and risk of the Buyer. To this end, the Buyer should ensure that these operations can be performed in accordance with sound professional practice. In the absence of this, COUPECO SAS may refuse to allow these operations to be performed and will inform the Buyer of this as Article II.1 fully applies.

The measures that COUPECO SAS may be led to take in the interest of and on behalf of the Buyer in terms of insurance, transport... particularly the fact of including the cost of transport in the price does not detract from the principle of delivery to its factories or workshops.

Any transport performed by COUPECO SAS with its own material means, whether or not the expenses are borne by the Buyer, is deemed to be done in accordance with a transport agreement that is separate from the sales agreement.

In the absence of instructions, COUPECO SAS will undertake the dispatch in the best interest of the Buyer. The Hardware and Equipment are only insured upon express request from the Buyer.

In every case, it is up to the Buyer to carry out all checks and to note all reservations upon the arrival of the Hardware and Equipment and to exercise, if necessary, the means of recourse against the transport company provided for under Article L. 133-1 and following of the Commercial Code within the time limits set by Article L. 133-3.

The mention "subject to unpacking" has no value vis-à-vis the transport company and cannot be accepted as a reservation.

V. PRICE

Prices are established in Euros, nets, excluding taxes and excluding customs, transport, insurance, packaging and "factory departure" costs for COUPECO SAS (FCA – Incoterms in force at the time the agreement is concluded). Under all scenarios, any eventual withholding taxes will be at the Buyer's expense.

The price is only valid for the period of validity of the offer in accordance with the terms of Article I.2 above. Once the period of validity is over, COUPECO SAS reserves the right to change its prices at any time.

The prices exclusively match the products and services specified in the offer, taking into account the various constitutive elements of the order accepted. Service provision, as well as additional supplies or supplies delivered during assembly are invoiced as a supplement.

Unless a different agreement exists, the specific studies and preliminary studies are not included in the price.

VI. CONDITIONS AND LATE PAYMENT

Unless there are different stipulations, payments are made to the home address of COUPECO SAS, net and without discount, and are payable according to the following conditions:

30% when the order is placed (down payment)

70% before the Hardware leaves the COUPECO SAS factory.

The remaining balance by SWIFT bank transfer according to bank identification information provided by the Vendor (fees payable by the Buyer) or bill of exchange accepted, payable starting from the date on which the invoice is issued within the reference time limit of 30 days.

In the event of a sale of spare parts and unless otherwise provided for, prices are understood to be for immediate payment on the date of delivery.

Any provision or request that would set or obtain a payment limit above this 30-day period, which represents good practice in the profession, and without an objective reason justified by the Buyer, may be considered to be unfair under the meaning of Article L. 442-II 7° of the Commercial Code.

No invoice gives the date on which the payment should be made. The amounts paid prior to delivery are in the nature of a down payment.

Down payments are always paid in cash and shall be subject to invoicing. VAT is payable according to the terms of Articles 256 I and 269 of the General Tax Code. Early payments are made without discount.

In the event of a payment by bill of exchange, acceptance should be within seven days of sending.

Any failure to make a payment within the agreed time limit or any refusal to accept a bill of exchange upon presentation, will lead to the following, without prejudice to the right to invoke the reservation of ownership provision:

Should this appear right to COUPECO SAS, the suspension or termination of all orders in progress

and, in application of Article L.441-6 paragraph 12 of the Commercial Code, any late payment will rightfully lead to, on the first day following the payment date that appears on the invoice:

1/ late payment penalties

Late payment penalties are determined in application of the European Central Bank refinancing rate increased by ten points.

2/ a flat payment for recovery fees amounting to 40 euros, in application of Article D. 441-5 of the Commercial Code.

In virtue of Article L. 441-6 mentioned above, when the recovery fees incurred are higher than the amount of this flat payment, COUPECO SAS is also within its rights to request additional compensation on the basis of supporting documents.

In the absence of instructions, COUPECO SAS will undertake the dispatch in the best interest of the Buyer. The Hardware and Equipment are only insured upon express request from the Buyer.

In every case, it is up to the Buyer to carry out all checks and to note all reservations upon the arrival of the Hardware and Equipment and to exercise, if necessary, the means of recourse against the transport company provided for under Article L. 133-1 and following of the Commercial Code within the time limits set by Article L. 133-3.

The mention "subject to unpacking" has no value vis-à-vis the transport company and cannot be accepted as a reservation.

VII. NEW HARDWARE GUARANTEE

Scope of the guarantee

COUPECO SAS commits to rectifying any operational defects that result from a design flaw, the materials themselves or the execution (including assembly if this operation is entrusted to it), within the limit of the following provisions.

The guarantee rightfully lapses should there be a forfeit in the validity of the Declaration of Conformity when the Buyer has either made use of non-original spare parts or undertaken maintenance or repair work or changes either alone or through the intermediary of an unapproved third party without written agreement from COUPECO SAS.

The guarantee does not apply:

In cases of malfunctions that result from a lack of maintenance or surveillance or in general any handling that does not comply with the manufacturer's written instructions (including recommendations for normal use that appear in the instruction manual) or with regulations in force

defects that result wholly or partially from normal wear and tear of the part, deterioration or accidents attributable to the Buyer or an unapproved third party

In the event of a defect that comes from parts provided by the Buyer and integrated to the manufacturing of the Buyer's request

In the event of breaches committed by the Buyer in relation to execution of the Agreement

In the event of Force Majeure as defined in Article IX.

In the case where Hardware is used outside mainland France, COUPECO SAS may change the scope and the terms of the guarantee as defined in these terms and conditions.

Unless otherwise stipulated, no guarantee will apply to second-hand Hardware, when the initial user codes the Hardware, the guarantee comes to an end.

No contractual guarantee will apply to spare parts that are not assembled by COUPECO SAS or a third party approved by the latter.

Buyer obligations

To benefit from this guarantee, the Buyer must, without delay, inform COUPECO SAS in writing of the defects that the Buyer attributes to the Hardware and provide all supporting documents to prove this is the case: it must offer COUPECO SAS every facility to observe the defects and offer a remedy.

Duration and starting point of the guarantee

The normal guarantee covers a period of one year starting from the date of delivery.

In the event of a sale of spare parts, the agreement will show the duration of the contractual guarantee granted by COUPECO SAS.

Terms for exercising the guarantee

It is agreed that the terms under which the guarantee is exercised; in the absence of this, the following terms shall apply:

during its period of validity, the guarantee obliges COUPECO SAS to replace parts that are recognised as defective after an examination by its technical department, or if it prefers, to repair them free of charge

the guarantee excludes any other service or compensation

repairs under the guarantee are carried out in the workshops designated by COUPECO SAS, and it is the Buyer's responsibility to send the Hardware to be repaired or the defective parts when the repairs are to take place outside the Buyer's workshops. COUPECO SAS reserves the right to invoice the Buyer for any travel or accommodation expenses of its agents.

Nevertheless, costs of labour associated with the dismantling or reassembly of the parts are borne by COUPECO SAS when these operations are performed by its staff or agents.

Parts that are replaced become COUPECO SAS property once again and must be immediately returned once they have been replaced.

Dispatch costs for Hardware not covered by the guarantee are at the Buyer's expense and risk.

VIII. LIABILITY

Definition of liability

The liability of COUPECO SAS is strictly limited to observance by itself or its subcontractor of expressly agreed contractual specifications.

The liability of COUPECO SAS does not apply to elements integrated by the Buyer to the equipment and when the equipment is integrated to a set.

Limits to liability

The civil liability of COUPECO SAS for all causes except bodily harm and gross negligence is limited to 50% of the pre-tax amount of the paid supply.

COUPECO SAS is not bound to repair the harmful consequences of failures by the Buyer or third parties in relation to execution of the agreement, nor for damages that come from the Buyer's use of technical documents, information or data that come from the Buyer or are imposed by the Buyer.

Under no circumstances shall COUPECO SAS be bound to compensate intangible damages whether direct or indirect, such as operating losses, lost opportunities, commercial prejudice or loss of earnings...

In the case where the planned penalties and compensation have been agreed by common accord, they have the value of a flat rate of compensation and are exclusive to any other sanction or compensation.

Exclusions of liability

The liability of COUPECO SAS for any circumstance foreseen under Article VII.1 of these terms and conditions. It is therefore expressly agreed that each of the cases of non-application of the contractual guarantee also constitutes a case of non-application of the liability of COUPECO SAS.

Implementation of liability

The liability of COUPECO SAS can only be engaged if the Buyer has previously demonstrated the existence of the damage, the existence of failure on the part of COUPECO SAS and the fact that this damage was caused by this failure. These elements can only be established, in the absence of a legal decision that has the force of law, by a previously negotiated and agreed transaction, in compliance with legal recommendations.

COUPECO SAS is not bound to repair the potentially damaging consequences of failures committed by the Buyer or by third parties in relation to execution of the agreement.

The Buyer waives the right to instigate proceedings and guarantees that its insurers or third parties in contractual agreement with it will waive their right to instigate proceedings against COUPECO SAS or its insurers beyond the limits and exclusions set by these terms and conditions.

IX. FORCE MAJEURE

Neither of the parties to the agreement may be held responsible for a delay or a failure in one of its obligations within the framework of this agreement if this delay or this failure is a direct or indirect effect of a case of force majeure.

There is force majeure when an event that is beyond the control of one party, which could not be reasonably foreseen when the agreement was concluded and therefore could not be avoided using appropriate measures, prevents the execution of an obligation.

Each party is held liable for the delay or failure, of the occurrence of a case of force majeure of which it has become aware and which it feels is of such a nature as to affect execution of the agreement.

If the obstacle is temporary, execution of the obligation is suspended unless the resulting delay justifies termination of the agreement. If the obstacle period exceeds one month, the parties shall come together as soon as possible to examine the change to the agreement in good faith.

If the obstacle is definitive, the agreement is rightfully terminated under the conditions provided for in Articles 1351 and 1351-1 of the Civil Code, should this appear to be the right course to the prevented party.

It is expressly agreed that the following events shall in particular be considered cases of force majeure, without this list being exhaustive:

Occurrence of a natural cataclysm

Earthquake, storm, fire, flooding...

Armed conflict, war, civil conflict, attacks

Labour disputes, total or partial strike action at COUPECO SAS or the Buyer

Labour disputes, total or partial strike action at suppliers, service providers, transport companies, post offices, public services...

Binding order from public authorities (prohibition on imports, embargo)

Operating accidents, machine breakdowns, explosion

Supplier lapses or failure

X. UNFORESEEN CIRCUMSTANCES

In the event of an unforeseen change in circumstances that was unforeseeable at the time of entering into the agreement makes execution of the agreement excessively costly for one of the parties, they can negotiate an amendment to the agreement in good faith. In addition to this, it is agreed that, and this list is not exhaustive, the following events are particularly targeted: variation in the market price of raw materials, changes to customs charges, changes to exchange rates, changes to laws.

In the event of a refusal or a breakdown in talks, the parties may agree to terminate the agreement, on a date and under conditions that they determine, or by common accord ask a judge to adapt it.

In the absence of an agreement within a reasonable time frame, the judge may, at the request of one of the parties, revise the agreement or terminate it, on a date and under conditions that he or she sets, in accordance with Article 1195 of the Civil Code. In consequence, COUPECO SAS states that it does not accept the risk of such a change in circumstances in advance. No stipulation about a set price or other mention may be interpreted as acceptance of such risk.

XI. TERMINATION

In the event of a serious failure on the part of one of the parties towards an essential obligation and notwithstanding the provisions of Article II.1, the other parties may rightfully break the agreement after notice specifying the alleged failure and the desire to terminate the agreement in virtue of this article has been served and remained unfruitful for 30 days. This provision does not obstruct the right to reparation for the prejudice suffered due to the fact that there is partial or total non-execution of the agreement.

Any application of Article 1222 of the Civil Code relating to the faculty of the Buyer to execute the obligation itself, is expressly excluded.

No price reduction sought on the basis of Article 1223 of the Civil Code may be put in motion without prior and express agreement from COUPECO SAS.

XII. MISCELLANEOUS

Confidentiality

The parties reciprocally undertake a general obligation to confidentiality that bears on any spoken or written confidential information, whatever the format (reports of discussions, plans, exchanges of computer data, activities, facilities, projects, know-how, products...) exchanged within the framework of preparing and executing the agreement, except for information which is generally known to the public or which would become public knowledge other than through the fault or the fact of one party or the other.

In consequence, the parties undertake to:

keep all confidential information strictly secret, in particular to not reveal or communicate, in any manner whatsoever, directly or indirectly, all or part of the confidential information to whomever, without the prior written authorisation of the other party.

not use all or part of the confidential information for purposes or business other than execution of the agreement

not copy or imitate all or part of the confidential information

The parties undertake to take all necessary measures in order to ensure observance of this obligation to confidentiality, even after its term has expired, and to ensure respect for this from all of their employees. This obligation is an obligation of results. COUPECO SAS retains complete ownership of the intellectual property and the know-how relative to its technical documents, projects, software, design plans and drawings and equipment provided, even in the event of a research agreement between the two parties. Any transfer of intellectual property rights shall be subject to written agreement between the parties.

Waiver

The fact that COUPECO SAS does not rely on any one of the provisions of these terms and conditions cannot be interpreted as preventing it from relying on it at a later stage.

Similarly, should any one of the provisions of these terms and conditions become null and void, this does not affect the validity of the other provisions.

XIII. DISPUTE AND APPLICABLE LAW

The parties undertake to attempt to settle their differences amicably before petitioning the competent court; to do this, they may resort to mediation if necessary, such as Corporate Mediation services. In the absence of an amicable agreement, the commercial court of the jurisdiction of the headquarters of COUPECO SAS is solely competent, no matter what conditions of sale or means of payment, even in the case of introducing third parties or multiple defendants.

French law is the only law applicable to the agreement and its consequences, with the exception of the Vienna Convention of 1980.

Professional terms and conditions filed with the Office of Professional Practice (Bureau des Usages Professionnels) of the Commercial Court of Paris on 27 March 2018 under the number No. D2018032008

General Data Protection Regulation

For any sales contract between the Buyer and the Seller, the Buyer accepts that the information collected (name of use, contact details, names of contacts and other official documents) may be used by the Seller and/or its network of dealers for commercial purposes. The duration of the conservation of this data starts as soon as the Buyer requests the sending of information and documents, such as sales support tools, and the establishment of a sales document, and continues for the entire duration of the partnership between the Buyer and the Seller.

In accordance with the laws "Informatique et Liberté" and "GDPR", the Buyer can exercise his right to rectify or oppose the use of his personal data by contacting the Seller.

Contents

CELEST 250	3
COMETH 320	5
COMETH+ 250	7
COMETH+ 320	9
GALAX H40	11
GALAX H50	13
GALAX 4100	15
GALAX 2500	17
GALAX 3200	19
SPARE PARTS	21

Our prices are exclusive of tax – FREE CARRIER PONS (France) - Transport and packaging excluded

S.A.S. with a capital of 100 000 € - R.C.S. SAINTES B 401 895 883 – SIRET 401 895 883 00023 – Code A.P.E. 2562B

Hedge trimmer

CELEST

250



SCAN ME



PANOLIN®
Swiss Oil Technology +



**MADE IN
FRANCE**

CELEST	Versions	References	Cutting height (m)		Cutting capacity (mm)	Cutting length (m)	Rotation speed (RPM)	Weight (Kg)
			Horizontal	Vertical				
250	Lamier 3400	THCM.V02.3400	2.50	3.90	20	1.83	3400	400
	Cutter bar 1.35 m	THCM.V02.BC135	2.50	4.50	20mm in green pruning 12mm in dry pruning	1.35	440	400

SPECIFICATIONS

CELEST 250, AUTOMOTIVE HEDGE TRIMMER:

- Mechanically welded steel sheet metal frame with pendulum on the front axle
- 13.5 HP BRIGGS & STRATTON combustion engine
- Front axle before steering
- Assembly of mechanically welded tubular articulated arms
- Belt-driven hydrostatic transmission for forward/reverse travel
- Hydraulic tank with filtration, visual level and venting
- Dual belt-driven hydraulic pumps, providing the necessary flow rates for the Lamier motor and movements
- Double-acting hydraulic cylinders equipped with pilot operated valves, ensuring that the arms are held in position
- Handlebar adjustable in height, inclination and folding to reduce transport space requirements
- All the controls positioned on the handlebars, including :
 - A double lever for forward/reverse travel on the right handle
 - A brake lever with locking for the parking brake on the left handle
 - A safety lever called "dead man" on the left handle
 - Six push buttons for the three main movements of the cutting arm on the left handle
 - A control panel containing the emergency stop button, two movements of the cutting arm and the starting of the Lamier with the choice of the direction of rotation
- Operating / maintenance / spare parts manual
- Tools for dismantling cutting equipment

Equipment delivered on pallet ref. 25.510.037 – 1800x1100mm

➤ LAMIER 3400 :

- Synchronous type welded cutting equipment, equipped with:
- 3 trays Ø400 mm with 360° movable blades, knife plates in the same cutting plane
 - Rotation speed: 3000 rpm
 - Weight ≈ 28 kg

Performances:

Working height on knives plates (horizontal): 2.50 m

Working height in curtain (vertical): 3.90 m

➤ ALTERNATIVE CUTTER BAR 2 MOVABLE SAWS LENGHT 1.35 M :

- 2 movable blades with removable cross-section
- 50cc hydraulic motor drive
 - Max. flow rate 22l/min at 170 bar
- Blade drive rods mounted on bearing on motor side
- Double clevis for connecting rods to blades with Silent Block
- Branch lifting shoe
- Drilled frame for fixing the support part
- Protective housing for the drive system
- Weight ≈ 20 kg

Performances:

Working height on knives plates (horizontal): 2.50 m

Working height in curtain (vertical): 4.50 m

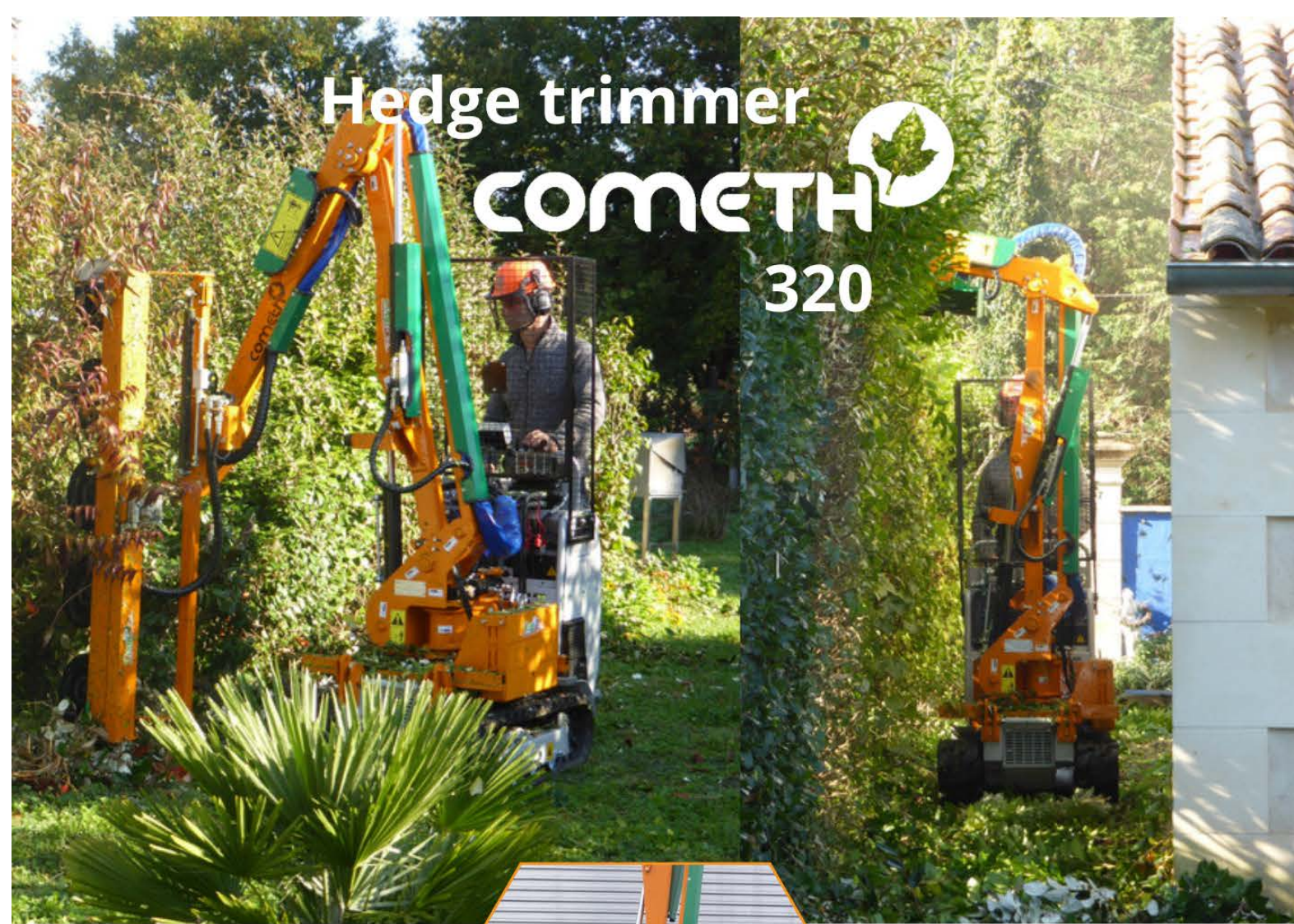
Accessories	References
Alternative Cutter bar 2 movable saws length. 1.35 m	BC.2LM.135
Lamier steel 3 knife plates Ø400 - CELEST 250	THCM.V02.3401
Antiprojection kit Lamier aluminium 3400	THCM.V02.KAP
Knife plate Ø400 mm	LA.400.01.010
Complete plate Ø400 mm with knives and screws	140.02.02
2 knives counterbends kit with complete bolts	30.702.455
Belt	21.750.001

Hedge trimmer

COMETH



320



SCAN ME



**MADE IN
FRANCE**

COMETH	Versions	References	Cutting height (m)		Cutting capacity (mm)		Cutting length (m)	Rotation speed (RPM)	Machine's weight (Kg)	Flow rate* (Lamier motor)
			Horizontal	Vertical	Knife plates	Saw blades				
320	Lamier 5420 Offset kit	THR.SP04.5420.KI	3.20	4.47	25	70	1.83	3400	550	21+6 l/mn to 180 bar

*Hydraulic distributor for each movement on the tool holder

SPECIFICATIONS

- * Welded chassis adaptable on plate for platform tool holders (**optional plate for platform → confer to spare parts page**)
- * Pivot operated by a double-acting cylinder centered on the chassis allowing the cutting equipment to be positioned to the right or in the axis of the machine for passage through a 80 cm width, and sweeping of the tops of the hedges
- * All articulated arms operated by double-acting cylinders
- * Cutting angle holding device: Double parallelogram
- * Offset slide of the Lamier stroke 500 mm to allow vertical cutting as close as possible to the carrier.
- * **Reinforced cutting equipment type 5420:**
 - Housing, casing and shoe Aluminium
 - Removable support tube
 - Equipped of 5 full knife plates with 360° movable knives
 - Cutting length: **1.83 m.**
 - Transmission power: 14 Cv
 - 6 cc motor adapted for a flow of 21 L/min.
(Hydraulic Power 9.5 Hp)
 - 2 axis level indicator kit (horizontal and vertical)
- * Set of motor and cylinder supply flexibles ending with quick couplers with valve at 1 m from the hitch
- * User and maintenance manual
- * Spare parts manual
- * Tools for dismantling the cutting equipment
- * **Prerequisites on the carrier:**
 - 1 continuous single-acting flow rate of 21 L/min at 180 bar output on couplers for the Lamier motor
 - 4 double-acting valves to control output movements on couplers: flow rate 5 L/min at 180 bar
 - 1 drain line on direct return to the tank

Equipment delivered on pallet ref. 25.510.053 - 2500x1850mm Full floor RAMPICAR + COMETH 320

Tool's carrier	Reference
RAMPICAR R80 - HONDA MOTOR 24CV + OPERATOR PLATFORM (Weight ≈ 400 kg)	R80.H24.001

Accessories	References
Antiprojection kit 5 knife plates	KLAP.5420

Spare parts price list → see page 21

Hedge trimmer COMETH+ 250

COMETH+ 250



SCAN ME



MADE IN
FRANCE

COMETH +	Versions	References	Cutting height (m)		Cutting capacity (mm)		Cutting length (m)	Rotation speed (RPM)	Machine's weight (Kg)	Global hydraulic flow
			Horizontal	Vertical	Knife plates	Saw blades				
250	Lamier 3420	TH.2501.3420A	2.50+	4.00+	25	70	1.14	3400	200	35 l/mn to 180 bar

+ : + the height of the arm lift, if carrier stability is ensured

SPECIFICATIONS

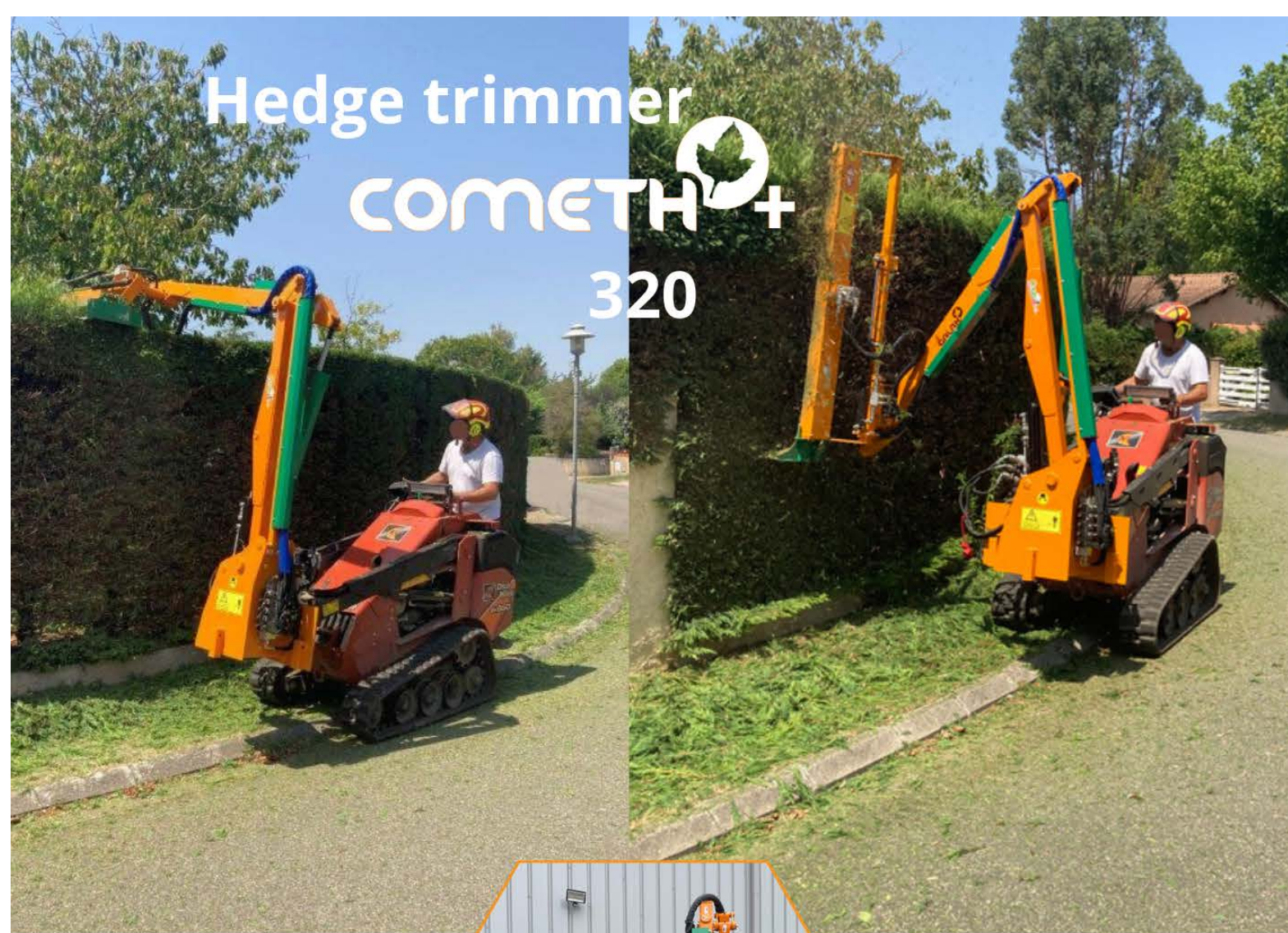
- * Main chassis with holes to receive a hitching bracket (optional hitching bracket)
- * Arm assembly mounted for work on the right side
- * **Cutting equipment type 3420 :**
 - equipped with 3 knife plates with 360° mobile knives
 - transmission power 10 HP
 - gear motor 6 cc
 - rotation speed 3400 rpm
- * **Hydraulic equipment :**
 - A 3-way flow divider for distribution of the flow between the engine and the movements
 - An electro-hydraulic distributor for starting the Lamier in two directions
 - An electro-hydraulic distributor block for controlling the movements with a flow regulator to regulate the speed of the movements
 - Balancing valves mounted on each of the cylinders
- * **Kit de commande électrique :**
 - Control panel to be positioned at the driver's cab with:
 - > Protective fuse and emergency stop button
 - > 3 bidirectional joysticks to control double-acting movements
 - > Switch on button for the Lamier motor with selection of the direction of rotation and delay for reversal of direction
 - > Power supply cable with 2-pin plug Lg 3 m
 - > Power supply cable for the distributor, length 5 m
- * Support legs incorporated in the chassis
- * Maintenance tools
- * User manual and spare parts manual
- * **Prerequisites on the carrier:**
 - 1 single acting flow rate in continuous pumping 35 L/min at 180 bar on couplers
 - 1 engine drain line directly back to the tank
 - 1 power supply 12 V on 3-pin socket

Equipment delivered on pallet ref. 25.510.012 – pallet 1200x800mm

Accessories	References
Ditch Witch - Toro Dingo compatible mounting plate	TH.2501.AD020
Multione front compatible mounting plate	TH.2501.AD001
Kit 3 half-couplings side equipment for Ditch Witch	KCH3.DW.SK1050
Control box support on magnet	SBCA.000
Level indicator kit 2 axes (horizontal / vertical)	08.100.440.PLUS
Antiprojection kit 3 knife plates	KLAP.3420

Spare parts price list → see page 21

Hedge trimmer COMETH+ 320



SCAN ME



MADE IN
FRANCE

COMETH +	Versions	References	Cutting height (m)		Cutting capacity (mm)		Cutting length (m)	Rotation speed (RPM)	Machine's weight (Kg)	Global hydraulic flow
			Horizontal	Vertical	Knife plates	Saw blades				
320	Lamier 4420 Kit déport	TH.3004.AV.4420.KD	3.20+	4.36+	25	70	1.50	3400	340	35 l/mn to 180 bar
	Lamier 5420 Kit déport	TH.3004.AV.5420.KD	3.20+	4.60+	25	70	1.83	3400	360	35 l/mn to 180 bar

+ : + the height of the arm lift, if carrier stability is ensured

SPECIFICATIONS

- A chassis for front mounting, prepared for hitching bracket (optional hitching bracket)
- Two arms allowing the Lamier to be positioned at the desired offset and height, thanks to double-acting cylinders
- The stroke of the arm cylinder is restricted to 15° in order to limit the lateral offset
- Double parallelogram system to maintain the cutting angle regardless of the arm movements
- A Lamier support piece to put the Lamier horizontally, vertically and to correct the position of the Lamier
- A 400 stroke offset kit on the support tube of the Lamier
- Work of the Lamier on the right of the carrier

* Cutting equipment type 4420 :

- Housing, casing and shoe Aluminium
- Equipped of 4 full knife plates with 360° movable knives
- Gear motor 8 cm3 in 3
- Transmission power: 14 Cv, - Rotation speed: 3400 RPM

* Cutting equipment type 5420 :

- Housing, casing and shoe Aluminium
- Equipped of 5 full knife plates with 360° movable knives
- Gear motor 8 cm3 in 3
- Transmission power: 14 Cv, - Rotation speed: 3400 RPM

- A hydraulic kit composed of:

- * A 3-way flow divider for distribution of the flow between the engine and the movements
- * An electro-hydraulic distributor for starting the Lamier in two directions
- * An electro-hydraulic distributor block for controlling the movements with flow regulator to regulate the speed of the movements
- * Cylinders equipped with balancing valve
- * A set of 3 hydraulic flexibles ending at 1.50m from the hitch without couplings

- An electric kit composed of:

- * A control panel to be positioned at the level of the driving station including:
 - > Protection fuse and emergency stop button, > 4 manipulators for the control of double-acting movements
 - > Button for starting the Lamier motor with selection of the direction of rotation and delay for reversal of direction
 - > Power supply cable with 2-pin plug Lg 3 m, > Power supply cable for the distributor, length 5 m

- Tools required for maintenance and to change the cutting elements
- User and maintenance manual for the pruning equipment and spare parts manual

Does not include:

- Automatic levelling of the Lamier, - The Lamier level indicator, - Couplers, - Magnetic housing support

Hydraulic prerequisites on the carrier:

- A single-acting hydraulic supply with a continuous flow of 35l/min – 180 bar pression
- A drain with direct return to the tank (max. admissible pressure on the drain: 2.5 bar)

Prerequisites at the driver's cab:

- 12V power supply for the control box on a 3-pin plug
 - Caution, the arm of the tool carrier must remain as close to the ground as possible in order to have optimal stability with the hedge trimmer
- Equipment delivered on pallet ref. 25.510.012 – 1200x800mm Full floor

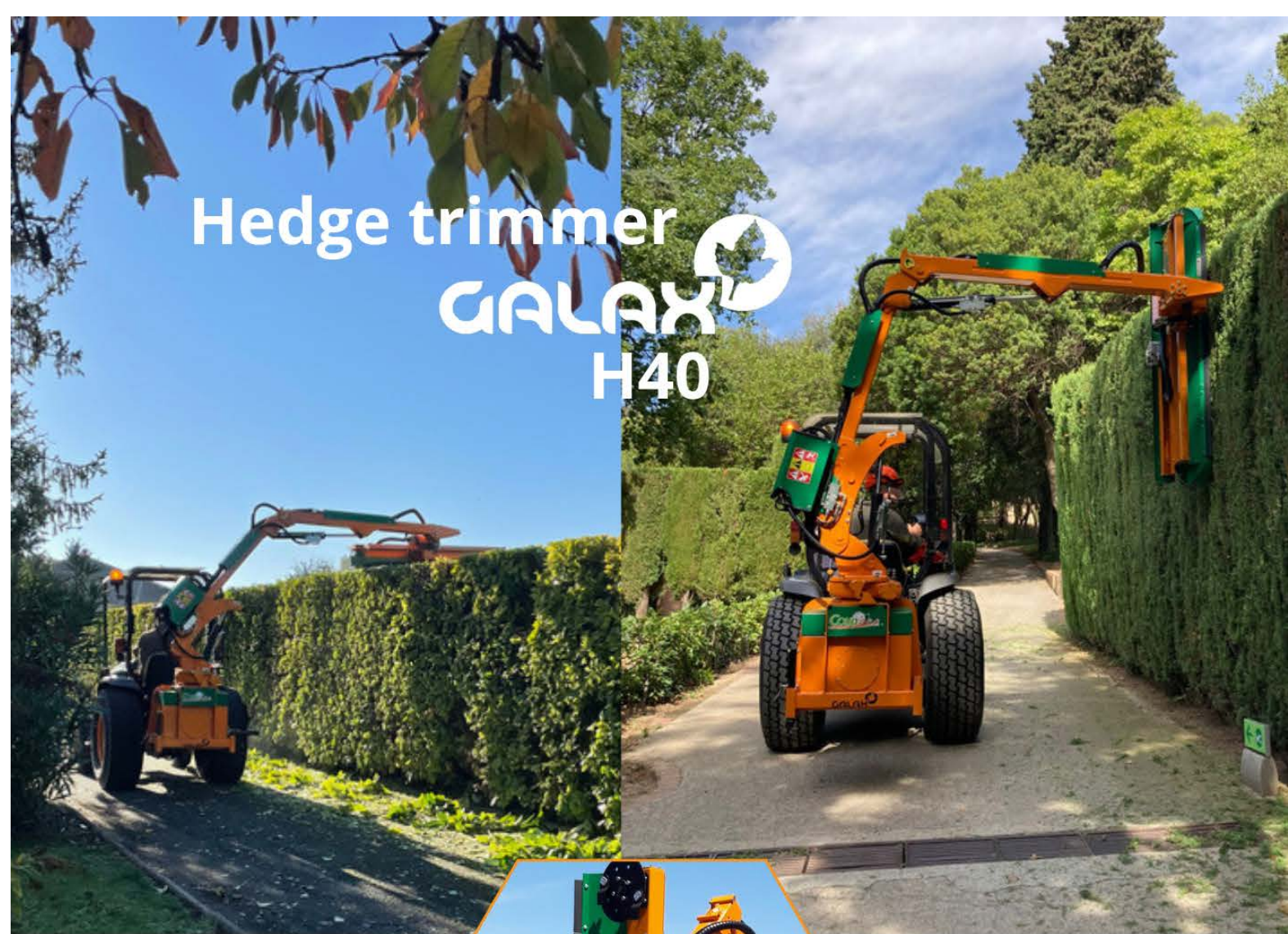
Accessories	References
Ditch Witch - Toro Dingo compatible mounting plate	TH.3004.AD020
Multione – Avant compatible mounting plate	TH.3004.AD001
Kit 3 half-couplings side equipment for Ditch Witch	KCH3.DW.SK1050
Control box support on magnet	SBCA.000
Added value for joystick control	OPT.JOY
Level indicator kit 2 axes (horizontal / vertical)	08.100.440.PLUS
Automatic 2-axis upgrade on COMETH+	MAN.AUTO
Antiprojection kit 4 knife plates	KLAP.4420
Antiprojection kit 4 knife plates	KLAP.5420

Spare parts price list → see page 23

Hedge trimmer

GALAXY

H40



SCAN ME



MADE IN
FRANCE

GALAX	Versions	References	Cutting height (m)		Offset (m)		Cutting capacity (mm)		Cutting length (m)	Rotation speed (RPM)	Carrier's weight (Kg)
			Horizontal (°)	Vertical (°)	Horizontal (°)	Vertical (°)	Plateaux	Lames			
H40	Lamier 4420 Total offset kit	TH.H40.4420.KDT	4.00	5.50	4.20	3.35	25	70	1.50	3400	1300*
	Lamier 5420 Total offset kit	TH.H40.5420.KDT	4.00	5.85	4.50	3.35	25	70	1.83	3400	1300*
RH40	Lamier 5420 Total offset kit	TH.H40R.5420.KDT	4.10	5.95	4.50	3.35	25	70	1.83	3400	1500*

* Conditionally (tractor stability)

SPECIFICATIONS

- * Complete chassis adaptable on rear or front lift arms Cat. 1
- * Built-in double hydraulic pump unit. (PTO speed : 540 rpm)
- * **Orientation crown on the chassis for 180° rotation of all arms --> Only for version RH40**
- * Device for maintaining the cutting angle: hydraulic parallelogram
- * Arm 2 taken in tablecloth, with cylinder positioned under the arm 2.
- * Hydraulic cutterbar offset kit, by worm gear system, over the entire length of the Lamier (joystick control)
- * Proportional valve with electric controls
- * Control panel for armrest to be positioned at the operator's platform, including:
 - An armrest with a single lever joystick that groups all the controls for the machine's movements
 - A control screen:
 - ° for starting the motor with choice of rotation sense
 - ° for selecting the operation of the automatic levelling of the Lamier : Manual / Automatic
 - Protective fuse
 - Power cable with 3-pin plug
- * **Cutting equipment type 420 in aluminium :**
 - Equipped with 4 or 5 knife plates with 360° movable knives
 - Gear motor 8 cm³ in 3
 - Transmission power 14 HP
- * Automatic levelling system for the 2-axis Lamier : Horizontal / Vertical
- * Organic oil, 100% synthetic, long-lasting resistance based on an annual inspection
- * Transmission cardan shaft
- * Rigging ties
- * Catalogue and tools
- * Weight: GALAX H40 Lamier 4420 ≈ 570 kg / GALAX H40 Lamier 5420 ≈ 580 kg / GALAX RH40 Lamier 5420 ≈ 670 kg
- Horizontal working height: 4.00 m – Vertical working height: 6.00 m - Folded height: 2.90 m
- Equipment delivered on pallet ref. 25.510.052 – 1800x1100mm Full floor

Accessories	References
Antiprojection kit 4 knife plates	KLAP.4420
Antiprojection kit 5 knife plates	KLAP.5420
4 saw blades kit	35.600.618
5 saw blades kit	35.600.620

Spare parts price list → see page 21

Hedge trimmer GALAX H50



SCAN ME



MADE IN
FRANCE

GALAX	Versions	References	Cutting height (m)		Offset (m)		Cutting capacity (mm)		Cutting length (m)	Rotation speed (RPM)	Carrier's weight (Kg)
			Horizontal ()	Vertical ()	Horizontal ()	Vertical ()	Knife plates	Saw blades			
H50	Lamier 5420 Kit déport total	TH.H50.5420.KDT	5.00	6.85	5.40	4.25	25	70	1.83	3400	1500*
RH50	Lamier 5420 Kit déport total	TH.H50R.5420.KDT	5.10	6.95	5.40	4.25	25	70	1.83	3400	1800*

* Conditionally (tractor stability)

SPECIFICATIONS

- * Complete chassis adaptable on rear or front lift arms Cat. 1
 - * Built-in double hydraulic pump unit. Equipped with roto-moulded tanks (PTO speed: 540 rpm)
 - * **Orientation crown on the chassis for 180° rotation of all arms --> Only for RH50 version**
 - * Main arm equipped with a 700 mm hydraulic telescopic travel for a minimum space requirement in transport position and full deployment over the length
 - * Cutting angle holding device : hydraulic parallelogram
 - * Hydraulic Lamier offset kit, by worm gear system, over the entire length of the Lamier (joystick control)
 - * Lowered hydraulic pivot, centered on the frame, allowing the cutting equipment to be positioned on the right or left of the machine (180°) with identical kinematics
 - * Proportional valve with electric controls
 - * Control panel for armrest to be positioned at the operator's platform, including:
 - An armrest with a single lever joystick that groups all the controls for the machine's movements
 - A control screen:
 - ° for starting the motor with choice of rotation sense
 - ° for selecting the operation of the automatic levelling of the lamier: Manual / Automatic
 - Protective fuse
 - Power cable with 3-pin plug
 - * **Cutting equipment type 420 in aluminium :**
 - Equipped with 5 knife plates with 360° movable knives
 - Gear motor 8 cm³ in 3
 - Transmission power 14 HP
 - * Automatic levelling system for the 2-axis Lamier: Horizontal / Vertical
 - * Organic oil, 100% synthetic, long-lasting resistance based on an annual inspection
 - * Transmission cardan shaft
 - * Rigging ties
 - * Catalogue and tools
 - * Weight: GALAX H50 Lamier 5420 ≈ 610 kg / GALAX RH50 Lamier 5420 ≈ 700 kg
- Horizontal working height: 5.00 m – Vertical working height: 7.00 m - Folded height : 3.20 m.
- Equipment delivered on pallet ref. 25.510.052 – 1800x1100mm Full floor

Accessories	References
Antiprojection kit 5 knife plates	KLAP.5420
5 saw blades kit	35.600.620

Spare part price list → see page 21

Hedge trimmer

GALAX 4100



PANOLIN®
Swiss Oil Technology +

SCAN ME



**MADE IN
FRANCE**

GALAX	Versions	References	Cutting height (m)		Cutting capacity (mm)		Cutting length (m)	Rotation speed (RPM)	Carrier's weight (Kg)
			Horizontal	Vertical	Knife plates	Saw blades			
4100	Lamier 4420	THP.4100.4420	3.80	5.07	25	70	1.50	3400	800*
	Lamier 5420	THP.4100.5420	3.80	5.42	25	70	1.83	3400	1000*

* Conditionally (tractor stability)

SPECIFICATIONS

- * Complete chassis adaptable to rear lift arm, (Size at rear right side) Cat. 1
- * Cutting angle holding device: Double parallelogram
- * Built-in dual hydraulic pump unit (PTO speed 540 rpm)
- * Proportional valves with electric controls
- * **Control panel for armrest to be positioned at the operator's platform, including:**
 - An armrest with a single lever joystick that groups all the controls for the machine's movements
 - A control screen:
 - ° for starting the motor with choice of rotation sense
 - ° for selecting the operation of the automatic levelling of the Lamier: Manual / Automatic
 - Protective fuse
 - Power cable with 3-pin plug
- * **Cutting equipment type 420 in aluminium :**
 - Equipped with 4 or 5 knife plates with 360° movable knives
 - Gear motor 8 cm³ in 3
 - Transmission power 14 HP
- * Automatic levelling system for the 2-axis Lamier: Horizontal / Vertical
- * Organic oil, 100% synthetic, long-lasting resistance based on an annual inspection
- * Transmission cardan shaft
- * Rigging ties
- * Catalogue and tools
- * Weight: GALAX 4100 Lamier 4420 ≈ 450 kg / GALAX 4100 Lamier 5420 ≈ 470 kg

Equipment delivered on pallet ref. 25.510.052 – 1800x1100mm Full floor

Accessoires	Références
Offset kit of the Lamier, stroke 400 mm (only in 1st climb)	THP.4100.KD
Antiprojection kit 4 knife plates	KLAP.4420
Antiprojection kit 5 knife plates	KLAP.5420
4 saw blades kit	35.600.618
5 saw blades kit	35.600.620

Spare parts price list → see page 21

Hedge trimmer

GALAX

2500



SCAN ME



MADE IN
FRANCE

GALAX	Versions	References	Cutting height (m)		Cutting capacity (mm)	Cutting length (m)	Rotation speed (RPM)	Carrier's weight (Kg)
			Horizontal	Vertical				
2500	Lamier 3420	TH.2500E.3420	2.70	4.25	25 (plates)	1.14	3400	600
	Cutter bar 1.50 m	TH.2500E.BC150	2.70	4.55	20 (cutter bar)	1.50	200 to 400	600

SPECIFICATIONS

- * Complete chassis predisposed for 3-point rear hitch on Category I (size at the rear right side)
- * Removable dual hydraulic power unit (PTO speed 540 rpm) : 40L hydraulic tank with filtration, venting, level gauge, drain plug
- * Electrohydraulic movement control valve with flow regulator to regulate the speed of the movements
- * Electrohydraulic distributor for starting the Lamier in two directions

*** Control panel to be positioned at the operator's platform:**

- 3 bidirectional manipulators for the control of double-acting movements
- Switch on button for the Lamier motor with rotation sense selection and direction reversal delay
- Protective fuse and ARU
- Power cable with 2-pin plug Lg 3 m.

* Stabilizers

* Removal feet

* Tools – Catalogue

Working capacity at height : 4.27 m in curtain - 2.70 on platform.

Weight: ≈ 260 kg.

Minimum carrier's weight: 510 kg (+100 kg additional weight at the front of the carrier) maintenance.

*** LAMIER 3420 VERSION:**

- equipped with 3 knife plates with 360° movable knives
- transmission power 10 HP
- 6 cc gear motor

*** CUTTER BAR simple, alternative and movable saw blade VERSION:**

- chassis with 50° square support tube
- operating speed : 300 to 400 strokes/minute
- hydraulic motor 50 cc

Equipment delivered on pallet ref. 25.510.012 – pallet 1200x800mm

Accessories	References
3 Saw blades kit	35.600.630
Antiprojection kit 3 knife plates	KLAP.3420

Spare parts price list → see page 21

Hedge trimmer

GALAX

3200



SCAN ME



MADE IN
FRANCE

GALAX	Versions	References	Cutting height (m)		Cutting capacity (mm)	Cutting length (m)	Rotation speed (RPM)	Machine's weight (Kg)	Hydraulic flow L/min
			Horizontal	Vertical					
3200	Lamier 3420	TH.3200E.N3420	3.20	4.40	25 (plates)	1.14	3500	320	38
	Rotor	TH.3200E.RD060	3.20	3.90	NA	0.60	2700	320	38
	Cutter bar 1.50m	TH.3200E.BC150	3.20	4.50	30 (cutter bar)	1.50	750	320	38

SPECIFICATIONS

- * Complete chassis adaptable on front or rear lift arms
- * Hydraulic tank integrated to the chassis capacity 40 L
- * Aero-cooler
- * Double pump with multiplier: PTO speed 540 rpm
- * Set of 2 arms actuated by double-acting cylinders with safety valve on valve block
- * Release system on 2nd arm by spring for use of the rotor and locking system for use of the Lamier
- * Cutting equipment support piece with 4-hole hitching bracket and orientation notched nut
- * Electro-hydraulic distributor fixed on the chassis
- * Hydraulic coupler kit for connecting the tool at the end of the arm
- * **Control panel to be positioned at the driver's station including:**
 - Start-up of the cutting equipment
 - Monolever all or nothing for the control of the movements
 - Protective fuse and emergency stop
- * Triangulation tie rods and connecting piece on the tractor side
- * Maintenance tools
- * User manual and spare parts manual

Minimum tractor's weight: 600 Kg

* LAMIER 3420 aluminium VERSION: <ul style="list-style-type: none"> - equipped of 3 knife plates with 360° movable knives - transmission power: 10 CV - 11 cc gear motor 	* MULCHER VERSION: <ul style="list-style-type: none"> - brush cutting equipment type rotor - knives number: 24 - top hitching bracket fixing 4 holes - gear motor: requisites flow 35 L/min - 180 bar pressure - direct transmission - motor protection cover shoe 	* CUTTER BAR VERSION, alternative simple mobile blade: <ul style="list-style-type: none"> - chassis with 50 cm square support tube - Useful cutting length: 1.50 m - cutting capacity until: 30 mm - 50 cc hydraulic motor - operating speed: 300 to 400 strokes/minute
--	--	---

Equipment delivered on pallet ref. 25.510.060 – 1900x900mm Full floor

Accessories	References
3 Saw blades kit	35.600.630
3420 aluminium Lamier - 11cc motor	03042.011.21300
Mulcher 60cm	RD.060.024
Cutter bar 1.50m	BC.030.150.TH3200
Lamier bracket kit	TH.3200E.KLAM

Spare parts price list → see page 21

SPARE PARTS

References	Items
30.702.457	KIT OF 2 KNIVES 2C 1T AND BOLT
21.750.522	BELT
TH.440.026	FULL KNIFE PLATES Ø420MM
TH.440.X61	FULL PLATE Ø420MM
35.600.605	SAW BLADES DIAMETER 420 - 64 TEETHS
25.410.534	ORGANICAL OIL, 100% SYNTHETIC, 20L TANK

NOTES

~ 22 ~



Contact details:

ZI du Chail - 17800 PONS - France

Tel. +33 (0)5 46 96 25 50

coupeco@coupeco.com

www.coupeco.com



Video of the range



2023