



**MADE IN  
FRANCE**

# PRICE LIST METEOR RANGE

Forest pruning, pruning in agricultural areas, public works  
Pruning saw blades on excavator, on front loader, on  
telescopic handler, on other carriers

DEPARTURE FROM PONS (FR-17800)

REF. N° MET.02.23

Validity for **DELIVERY** before  
the 31/07/2023

 **YouTube**



**2023**





## Terms & Conditions of Sale

### I. GENERAL INFORMATION

#### 1. Purpose and scope of application of the general terms and conditions

These professional terms and conditions of sale frame the professional usages for activities that are brought together under the union of equipment for construction, infrastructure, steelworks and handling. They are in compliance with the rules of law for contracts and competition law and are filed with the Office of Practices (Bureau des usages) of the registry of the Commercial Court of Paris. In accordance with Article L441-6 of the Commercial Code, they constitute "the single basis for sales negotiations". Therefore, they apply to all COUPECO SAS business and form the legal basis for an agreement, unless there are special conditions. Any eventual Buyer conditions of purchase have the status of a proposal. These terms and conditions take precedence over all contrary provisions formulated in any way by the Buyer if COUPECO SAS has not explicitly accepted them. Any derogation from these terms and conditions in favour of the Buyer is "justification" for compensation. Any order or acceptance of an offer from COUPECO SAS implies acceptance of these terms and condition unless there are negotiations between the parties. These terms and conditions apply to the sale of Hardware or Equipment and associated services. They do not apply to service provision when said services are the main purpose of the agreement. Under these terms and conditions "written" means any document established by any means, in particular in paper or electronic format.

#### 2. Concluding the agreement

In the absence of special mention, the COUPECO SAS offer will be valid for one month. Unless specifically indicated by COUPECO SAS, this period of one month will be deemed to constitute the "set deadline" under the meaning of Article 1117 of the Civil Code.

The sales agreement is only complete after written acceptance from COUPECO SAS of the Buyer's order.

In the event of sales of spare parts, the dispatch of the parts by COUPECO SAS is deemed to constitute acceptance of the Buyer's order.

Any change to the agreement requested by the Buyer is subject to express acceptance from COUPECO SAS.

The order is the expression of the Buyer's irrevocable consent; the Buyer therefore cannot cancel it, unless there is express prior agreement from COUPECO SAS. In this case, the Buyer will compensate COUPECO SAS for all expenses engaged and for all the direct and indirect consequences that result from this. Furthermore, the deposit that has already been paid remains acquired by COUPECO SAS. Unless there is a contrary provision, the characteristics given in the catalogues, brochures and any COUPECO SAS publicity document are purely for indicative purposes.

COUPECO SAS reserves the possibility to make any changes that it deems appropriate to its models even after acceptance of orders. These changes should not alter the essential characteristics and performance of the Hardware and Equipment on sale.

#### 3. Compliance and technical regulations

The products delivered comply with technical regulations that apply and technical standards to which COUPECO SAS has explicitly stated the product complies.

When COUPECO SAS is the manufacturer of the equipment, it is responsible for the technical regulations applicable to the design and initial marketing of said equipment. The Buyer is responsible for the regulations applicable to equipment commissioning and use.

The offer integrates regulatory requirements and more generally safety requirements known to COUPECO SAS at the time it is established. In the event of a change in regulatory requirements between the presentation of the offer and full execution of the agreement, updated compliance is not covered by COUPECO SAS, and the Buyer will be sent an additional offer to this effect.

Similarly, if during the same period COUPECO SAS receives information which is not available to it at the time of establishing the offer (comprehensive plan of the facility, accessories...) - changes or additional equipment made necessary in consequence will be subject to a complementary offer.

COUPECO SAS takes responsibility for the regulatory compliance of the equipment components.

Any change to the equipment that is not authorised by COUPECO SAS, carried out by the Buyer or a third party that is not accredited by COUPECO SAS, will lead to the cancellation of the CE Declaration of Conformity provided by COUPECO SAS. Replacement of a part that has repercussions on safety by a non-original part will also lead to the cancellation of said Declaration.

COUPECO SAS shall provide documents that contain service instructions (such as instruction manuals, user guides...). Users shall familiarise themselves with these before commissioning.

The Buyer is responsible for operating the product under foreseeable conditions of use and in application of safety and environmental laws in force at the user site as well as sound professional practice.

In particular, it is the Buyer's responsibility to choose a product that matches its technical requirements and its operational process if necessary, and to conform with COUPECO SAS that the product is suitable for the planned application.

### II. DELIVERY

#### 1. Terms of delivery

Delivery deadlines begin from the date on which receipt of the order is acknowledged, subject to receiving all the documents to be provided by the Buyer in order to begin executing the agreement and the payment of any eventual planned down payment.

Whatever the destination of the Hardware and the terms of sale, delivery is deemed to take place in the COUPECO SAS factories or workshops unless otherwise provided for.

It takes place through simple notice of availability or by any means. Direct handover of the Hardware to the Buyer, or Delivery of the Hardware to COUPECO SAS factories or workshops to a dispatch or transport company designated by the Buyer, or, failing this, by COUPECO SAS may take the place of such notice.

The Buyer must take possession of the hardware within ten days following the notification of availability.

If the Buyer does not take the Hardware at the agreed place and time, and on condition to the delay not being attributable to an act or omission on the part of COUPECO SAS, it is bound to carry out the payments provided for in the agreement as the delivery is deemed to have been carried out. In this case, COUPECO SAS can choose to provide storage at the Buyer's expense and risk, once the Buyer has been informed of this.

Under no circumstances may an extension to the delivery date indicated attributable to COUPECO SAS lead to a cancellation of the order, payment of damages and interest or any other sort of penalty.

#### 2. Receipt

Should the Buyer not make a written claim within eight days following the date of delivery, the Hardware and Equipment are deemed to have been received.

Any claim related to transport should be made within a period of three days (refer to Article IV).

### III. RESERVATION OF OWNERSHIP AND TRANSFER OF RISKS

COUPECO SAS retains full ownership of goods that are the purpose of the agreement until full payment of the price

(principal and incidentals), in compliance with Articles 2367 and following of the Civil Code and L. 624-16 and following of the Commercial Code.

From the moment of delivery, the Buyer becomes responsible for any damage which these goods may be subjected to or cause for any reason whatsoever.

Until full payment, the goods may not be resold or transformed with prior agreement from COUPECO SAS.

However, in the event of resale, COUPECO SAS may operate its resale rights by claiming the debt directly from the end customer.

### IV. TRANSPORT AND INSURANCE

Transport, insurance, customs, handling and transport to site operations are at the expense and risk of the Buyer. To this end, the Buyer should ensure that these operations can be performed in accordance with sound professional practice. In the absence of this, COUPECO SAS may refuse to allow these operations to be performed and will inform the Buyer of this as Article 8.1 fully applies.

The measures that COUPECO SAS may be led to take in the interest of and on behalf of the Buyer in terms of insurance, transport... particularly the fact of including the cost of transport in the price does not detract from the principle of delivery to its factories or workshops.

Any transport performed by COUPECO SAS with its own material means, whether or not the expenses are borne by the Buyer, is deemed to take in accordance with a transport agreement that is separate from the sales agreement.

In the absence of instructions, COUPECO SAS will undertake the dispatch in the best interest of the Buyer. The Hardware and Equipment are only insured upon express request from the Buyer.

In every case, it is up to the Buyer to carry out all checks and to note all reservations upon the arrival of the Hardware and Equipment and to exercise, if necessary, the means of recourse against the transport company provided for under Article L. 133-1 and following of the Commercial Code within the time limits set by Article L. 133-3.

The mention "subject to unpacking" has no value vis-à-vis the transport company and cannot be accepted as a reservation.

### V. PRICE

Prices are established in Euros, nets, excluding taxes and excluding customs, transport, insurance, packaging and "factory departure" costs for COUPECO SAS (FCA - Incoterms in force at the time the agreement is concluded). Under all scenarios, any eventual withholding taxes will be at the Buyer's expense.

The price is only valid for the period of validity of the offer in accordance with the terms of Article I.2 above. Once the period of validity is over, COUPECO SAS reserves the right to amend its prices at any time.

The prices exclusively match the products and services specified in the offer, taking into account the various constitutive elements of the order accepted. Service provision, as well as additional supplies or supplies delivered during assembly are invoiced as a supplement.

Unless a different agreement exists, the specific studies and preliminary studies are not included in the price.

### VI. CONDITIONS AND LATE PAYMENT

Unless there are different stipulations, payments are made to the home address of COUPECO SAS, net and without discount, and are payable according to the following conditions:

30% when the order is placed (down payment)

70% before the Hardware leaves the COUPECO SAS factory.

The remaining balance by SWIFT bank transfer according to bank identification information provided by the Vendor (fees payable by the Buyer) or bill of exchange accepted, payable starting from the date on which the invoice is issued within the reference time limit of 30 days.

In the event of a sale of spare parts and unless otherwise provided for, prices are understood to be for immediate payment on the date of delivery.

Any provision or request that would set or obtain a payment limit above this 30-day period, which represents good practice in the profession, and without an objective reason justified by the Buyer, may be considered to be unfair under the meaning of Article L. 442-61° 7° of the Commercial Code.

Should the date on which the payment should be made. The amounts paid prior to delivery are in the nature of a down payment.

Down payments are always paid in cash and shall be subject to invoicing. VAT is payable according to the terms of Articles 256 § 8 and 269 of the General Tax Code. Early payments are made without discount.

In the event of a payment by bill of exchange, acceptance should be within seven days of sending.

Any failure to make a payment within the agreed time limit or any refusal to accept a bill of exchange upon presentation, will lead to the following, without prejudice to the right to invoice the reservation of ownership provision:

should this appear right to COUPECO SAS, the suspension or termination of all orders in progress

and, in application of Article L.441-6 paragraph 12 of the Commercial Code, any late payment will rightfully lead to, on the first day following the payment date that appears on the invoice:

1/ late payment penalties

Late payment penalties are determined in application of the European Central Bank refinancing rate increased by ten points.

2/ a flat payment for recovery fees amounting to 40 euros, in application of Article D. 441-5 of the Commercial Code.

In virtue of Article L. 441-6 mentioned above, when the recovery fees incurred are higher than the amount of this flat payment, COUPECO SAS is also within its rights to request additional compensation on the basis of supporting documents.

Finally, should this appear right to COUPECO SAS, lawful termination of the sales agreement one month after notice has been served to the Buyer by registered letter with acknowledgement of receipt to comply with its obligations. In this case, and without prejudice to any damages, the Buyer, in addition to its obligation to return all goods in its possession, must pay termination compensation to COUPECO SAS, set at 20% of the price, assessed on the date of termination. This compensation will be assigned to the payments already received.

### VII. NEW HARDWARE GUARANTEE

#### Scope of the guarantee

COUPECO SAS commits to rectifying any operational defects that result from a design flaw, the materials themselves or the execution (including assembly if this operation is entrusted to it), within the limit of the following provisions.

The guarantee rightfully lapses should there be a fault in the validity of the Declaration of Conformity when the Buyer has either made use of non-original spare parts or undertaken maintenance or repair work or changes either alone or through the intermediary of an unapproved third party without written agreement from COUPECO SAS.

The guarantee does not apply:

in cases of malfunctions that result from a lack of maintenance or surveillance or in general any handling that does not comply with the manufacturer's written instructions (including recommendations for normal use that appear in the instruction manual) or with regulations in force

defects that result wholly or partially from normal wear and tear of the part, deterioration or accidents attributable to the Buyer or an unapproved third party

in the event of a defect that comes from parts provided by the Buyer and integrated to the manufacturing at the Buyer's request

in the event of breaches committed by the Buyer in relation to execution of the Agreement

in the event of Force Majeure as defined in Article IX.

In the case where Hardware is used outside mainland France, COUPECO SAS may change the scope and the terms of the guarantee as defined in these terms and conditions.

Unless otherwise stipulated, no guarantee will apply to second-hand Hardware; when the initial user cedes the Hardware, the guarantee comes to an end.

No contractual guarantee will apply to spare parts that are not assembled by COUPECO SAS or a third party approved by the latter.

#### Buyer obligations

To benefit from this guarantee, the Buyer must, without delay, inform COUPECO SAS in writing of the defects that the Buyer attributes to the Hardware and provide all supporting documents to prove this is the case: it must offer COUPECO SAS every facility to observe the defects and offer a remedy.

#### Duration and starting point of the guarantee

The normal guarantee covers a period of one year starting from the date of delivery.

In the event of a sale of spare parts, the agreement will show the duration of the contractual guarantee granted by COUPECO SAS.

#### Terms for exercising the guarantee

The agreement defines the terms under which the guarantee is exercised. In the absence of this, the following terms will apply:

during its period of validity, the guarantee obliges COUPECO SAS to replace parts that are recognised as defective after an examination by its technical department, or if it prefers, to repair them free of charge

the guarantee excludes any other service or compensation

repairs under the guarantee are carried out in the workshops designated by COUPECO SAS, and it is the Buyer's responsibility to send the Hardware to be repaired or the defective parts when the repairs are to take place outside the Buyer's workshops. COUPECO SAS reserves the right to invoice the Buyer for any travel or accommodation expenses of its agents.

Nevertheless, costs of labour associated with the dismantling or reassembly of the parts are borne by COUPECO SAS when these operations are performed by its staff or agents.

Parts that are replaced become COUPECO SAS property once again and must be immediately returned once they have been replaced.

Dispatch costs for Hardware not covered by the guarantee are at the Buyer's expense and risk.

### VIII. LIABILITY

#### Definition of liability

The liability of COUPECO SAS is strictly limited to observance by itself or its subcontractors of expressly agreed contractual specifications.

The liability of COUPECO SAS does not apply to elements integrated by the Buyer to the equipment and when the equipment is integrated to a set.

Limits to liability

The civil liability of COUPECO SAS for all causes except bodily harm and gross negligence is limited to 50% of the pre-tax amount of the paid supply.

COUPECO SAS is not bound to repair harmful consequences of failure by the Buyer or third parties in relation to execution of the agreement, nor for damages that come from the Buyer's use of technical documents, information or data that come from the Buyer or are imposed by the Buyer.

Under no circumstances shall COUPECO SAS be bound to compensate intangible damages whether direct or indirect, such as operating losses, lost opportunities, commercial prejudice or loss of earnings...

In the case where the planned penalties and compensation have been agreed by common accord, they have the value of a flat rate of compensation and are exclusive to any other sanction or compensation.

Exclusions of liability

The liability of COUPECO SAS for any circumstance foreseen under Article VIII.1 of these terms and conditions. It is therefore expressly agreed that each of the cases of non-application of the contractual guarantee also constitutes a case of non-application of the liability of COUPECO SAS.

Implementation of liability

The liability of COUPECO SAS can only be engaged if the Buyer has previously demonstrated the existence of the damage, the existence of failure on the part of COUPECO SAS and the fact that this damage was caused by this failure. These elements can only be established, in the absence of a legal decision that has the force of law, by a previously negotiated and agreed transaction, in compliance with legal recommendations.

COUPECO SAS is not bound to repair the potentially damaging consequences of failures committed by the Buyer or by third parties in relation to execution of the agreement.

The Buyer waives the right to instigate proceedings and guarantees that its insurers or third parties in contractual agreement with it will waive their right to instigate proceedings against COUPECO SAS or its insurers beyond the limits and exclusions set by these terms and conditions.

### IX. FORCE MAJEURE

Neither of the parties to the agreement may be held responsible for a delay or a failure in one of its obligations within the framework of this agreement if this delay or this failure is a direct or indirect effect of a case of force majeure.

There is force majeure when an event that is beyond the control of one party, which could not be reasonably foreseen when the agreement was concluded and therefore could not be avoided using appropriate measures, prevents the execution of an obligation.

Each party shall inform the other party, without delay, of the occurrence of a case of force majeure of which it has become aware and which it feels is of such a nature as to affect execution of the agreement.

If the obstacle is temporary, execution of the obligation is suspended until the definitive termination of the agreement. If the obstacle period exceeds one month, the parties shall come together as soon as possible to examine the change to the agreement in good faith.

If the obstacle is definitive, the agreement is rightfully terminated under the conditions provided for in Articles 1351 and 1351-1 of the Civil Code, should this appear to be the right course to the prevented party.

It is expressly agreed that the following events shall in particular be considered cases of force majeure, without this list being exhaustive:

Occurrence of a natural calamity

Earthquake, storm, fire, flooding...

Armed conflict, war, civil conflict, attacks

Labour disputes, total or partial strike action at COUPECO SAS or the Buyer

Labour disputes, total or partial strike action at suppliers, service providers, transport companies, post offices, public services...

Binding order from public authorities (prohibition on imports, embargo)

Operating accidents, machine breakdowns, explosion

Supplier lapses or failure

### X. UNFORESEEN CIRCUMSTANCES

It is agreed that in the event that a change in circumstances that was unforeseeable at the time of entering into the agreement makes execution of the agreement excessively costly for one of the parties, they can negotiate an amendment to the agreement in good faith. In addition to this, it is agreed that, and this list is not exhaustive, the following events are particularly targeted: variation in the market price of raw materials, changes in exchange rates, changes in law.

In the event of a refusal or a breakdown in talks, the parties may agree to terminate the agreement, on a date and under conditions that they determine, or by common accord ask a judge to adapt it.

In the absence of an agreement within a reasonable time frame, the judge may, at the request of one of the parties, revise the agreement or terminate it, on a date and under conditions that he or she sets, in accordance with Article 1195 of the Civil Code. In consequence, COUPECO SAS states that it does not accept the risk of such a change in circumstances in advance. No stipulation about a set price or other mention may be interpreted as acceptance of such risk.

### XI. TERMINATION

In the event of a serious failure on the part of one of the parties towards an essential obligation and notwithstanding the provisions of Article II.1, the other parties may rightfully break the agreement after notice specifying the alleged failure and the desire to terminate the agreement in virtue of this article has been served and remained unfruitful for 30 days. This provision does not obstruct the right to reparation for the prejudice suffered due to the fact that there is partial total non-execution of the agreement.

Any application of Article 1223 of the Civil Code relating to the faculty of the Buyer to execute the obligation itself, is expressly excluded.

No price reduction sought on the basis of Article 1223 of the Civil Code may be put in motion without prior and express agreement from COUPECO SAS.

### XII. MISCELLANEOUS

#### Confidentiality

The parties reciprocally undertake a general obligation to confidentiality that bears on all spoken or written confidential information, whatever the format (reports of discussions, plans, exchanges of computer data, activities, facilities, projects, know-how, products...) exchanged within the framework of preparing and executing the agreement, except for information which is generally known to the public or which would become public knowledge other than through the fault or the fact of one party or the other.

In consequence, the parties undertake to:

keep all confidential information strictly secret, in particular to not reveal or communicate, in any manner whatsoever, directly or indirectly, all or part of the confidential information to whomever, without the prior written authorisation of the other party,

not use all or part of the confidential information for purposes or business other than execution of the agreement

not copy or imitate all or part of the confidential information

The parties undertake to take all necessary measures in order to ensure observance of this obligation to confidentiality, even after its term has expired, and to ensure respect for this from all of their employees. This obligation is an obligation of results. COUPECO SAS retains complete ownership of the intellectual property and the know-how relative to its technical documents, projects, software, design plans and drawings and equipment provided, even in the event of a research agreement between the two parties. Any transfer of intellectual property rights shall be subject to written agreement between the parties.

Waiver

The fact that COUPECO SAS does not rely on any one of the provisions of these terms and conditions cannot be interpreted as preventing it from relying on it at a later stage.

Similarly, should any one of the provisions of these terms and conditions become null and void, this does not affect the validity of the other provisions.

### XIII. DISPUTE AND APPLICABLE LAW

The parties undertake to attempt to settle their differences amicably before petitioning the competent court; to do this, they may resort to mediation if necessary, such as Corporate Mediation services. In the absence of an amicable agreement, the commercial court of the jurisdiction of the headquarters of COUPECO SAS is solely competent, no matter what conditions of sale or means of payment, even in the case of introducing third parties or multiple defendants.

French law is the only law applicable to the agreement and its consequences, with the exception of the Vienna Convention of 1980.

Professional terms and conditions filed with the Office of Professional Practice (Bureau des Usages Professionnels) of the Commercial Court of Paris on 27 March 2018 under the number No. D2018032008

#### General Data Protection Regulation

For any sales contract between the Buyer and the Seller, the Buyer accepts that the information collected (name of use, contact details, names of contacts and other official documents) may be used by the Seller and/or its network of dealers for commercial purposes. The duration of the conservation of this data starts as soon as the Buyer requests the sending of information and documents, such as sales support tools, and the establishment of a sales document, and continues for the entire duration of the partnership between the Buyer and the Seller.

In accordance with the laws "Informatique et Liberté" and "GDPR", the Buyer can exercise his right to rectify or oppose the use of his personal data by contacting the Seller.



## Contents

<b>MOUNTING ON EXCAVATOR .....</b>	<b>5</b>
<i>METEOR P80.....</i>	<i>6</i>
<i>METEOR MINI P90.....</i>	<i>8</i>
<i>METEOR P260.....</i>	<i>10</i>
<i>METEOR P90.....</i>	<i>12</i>
<i>METEOR P180.....</i>	<i>14</i>
<i>METEOR P180I .....</i>	<i>16</i>
<i>METEOR P360.....</i>	<i>18</i>
<b>MOUNTING ON FRONT LOADER.....</b>	<b>21</b>
<i>METEOR MD100.....</i>	<i>22</i>
<i>METEOR T90R LAMIER 500.....</i>	<i>24</i>
<i>METEOR T90C.....</i>	<i>26</i>
<b>MOUNTING ON TELESCOPIC LOADER.....</b>	<b>29</b>
<i>METEOR T90R LAMIER 600.....</i>	<i>30</i>
<i>METEOR T90C.....</i>	<i>32</i>
<b>CUSTOME-MADE PROJECT .....</b>	<b>34</b>
<b>SPARE PARTS / ACCESSORIES .....</b>	<b>36</b>
<b>HITCHING BRACKETS.....</b>	<b>37</b>



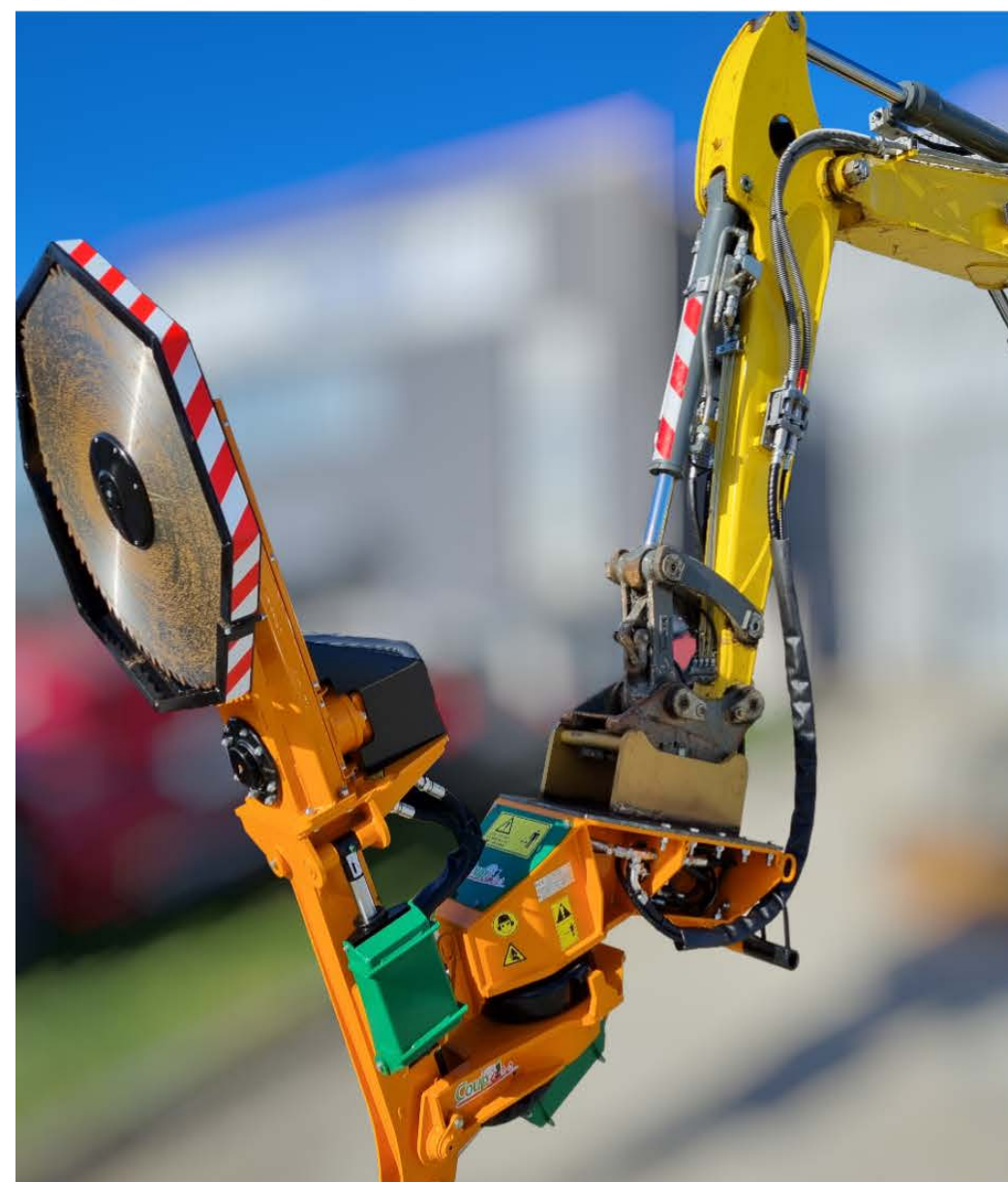
## NOTES

~ 4 ~



# MOUNTING ON EXCAVATOR

Thanks to our expertise and know-how, our Meteor range is fully adaptable to all types of excavators.







# METEOR

## P80



SCAN ME



MADE IN  
FRANCE



## Excavator mounting ≤ 2.5 Tons

Reference	METEOR	Nbr of saw blades – knife plates / diameter (mm)	Cutting capacity (mm)	Cutting length (m)	Weight (kg) Without hitching
MP80.1700.17	P80 LAMIER 1700	1 saw blade / Ø700	Ø240/Ø25	0.70	60

### METEOR P80 :

\* Chassis with a pierced plate, predisposed to receive the hitching bracket between the pruning equipment and the excavator  
(Hitching NOT included)

\* A Lamier support piece that can be rotated 90° to a horizontal axis, done manually

\* Manual locking

\* Cutting equipment **SINGLE BLADE 700 type** diameter **700mm**:

> Equipped with single blade diameter 700 mm - 80 Teeths - Thickness. 4mm

> Gear hydraulic motor 17 cm<sup>3</sup>

° Double rotation sense

° Without pressure limiter

° Flow and pressure required: **35 l/min at 180 bar**

° Rotation speed: 2000 RPM

> Drive : Direct transmission from the engine

\* A set of connectors :

> Female ¾ gaz for engine supply

> Mâle 12L for the drain

\* Tools to maintain and to change the cutting equipment

\* Operation and maintenance manual for the pruning equipment and spare parts manual

### Does not include:

\* Hitching bracket between the pruning equipment and the excavator

\* Flow regulator and pressure limiter

\* Safety valve

\* Flexibles kit between the excavator and the motor

\* Hydraulic couplers

### Hydraulic prerequisites on the excavator:

\* Continuous hydraulic oil flow simple effect at the end of the boom of **35 l/min at 180 bar**

\* This flow must be constant, regardless of the movements of the carrier, and at a forward speed less than 1 km/h

\* Drain to direct return to tank (max. allowable pressure on the drain: 2.5 bar)

### Prerequisites in cabin:

\* A start up button for the Lamier

\* An emergency stop button

\* A command to activate the movement of the cylinder

Delivered on a pallet 1200x800mm – ref. 25.510.012

Accessories		
* KLP.45L.MBSP12	* Pressure limiter MANDATORY delivered, mounted ( <i>imperative if pressure &gt; pressure required</i> ) NOTE: Only one direction of rotation in this case	
KCR.45L.MBSP12	Safety valve kit from 30 L to 60 L	
K3F.40L.02M	Flexibles kit 2 m (oil flow 40 L)	
	Hitching bracket (connection between the cutting equipment and the excavator)	see P.37

Spare parts -> see P.36





SCAN ME



MADE IN  
FRANCE



## Excavator mounting from 2.5 Tons

References	METEOR	Nbr of saw blades – knife plates / diameter (mm)	Cutting capacity (mm)	Cutting length (m)	Weight (kg) Without hitching
MMP90.H90.1500	Mini P90 LAMIER 1500	1 saw blade / Ø500	Ø160/Ø25	0.50	50
MMP90.H90.1600	Mini P90 LAMIER 1600	1 saw blade / Ø600	Ø200/Ø25	0.60	65

### METEOR MINI P90 :

- \* Chassis with a pierced plate, predisposed to receive the hitching bracket between the pruning equipment and the excavator (**Hitching NOT included**)
- \* Lamier orientation 90° setting by hydraulic cylinder double effect
- \* Cutting Equipment **Single blade** diameter **500mm** (17cc motor) / **600mm** (17cc motor) **type** (to be choose on the table above)
- \* A set of hydraulic connections:
  - > Mâle 20S for the motor supply
  - > Mâle 12L for the drain
  - > Mâle 10M for the cylinder
- \* Tools to maintain and to change the cutting equipment
- \* Operation and maintenance manual for the pruning equipment and spare parts manual

### Does not include:

- \* Hitching bracket between the pruning equipment and the excavator
- \* Flow regulator and pressure limiter
- \* Safety valve
- \* Flexibles kit between the excavator and the motor, or between the excavator and the cylinder
- \* Hydraulic couplers

### Hydraulic prerequisites on the excavator:

- \* Hydraulic oil flow in continuous at the end of the boom of **42 l/min at 120 bar / 45 l/min at 180 bar**
- \* Drain to direct return to tank (max. allowable pressure on the drain: 2.5 bar)
- \* Hydraulic oil flow line for the cylinder: 8 to 12 l/min at 180 bar

### Prerequisites in cabin:

- \* A start up button for the pruning equipment
- \* An emergency stop button
- \* A command to activate the movement of the cylinder

Delivered on a pallet 1200x800mm – ref. 25.510.012

Accessories		
*KLP.45L.MBSP12	* Pressure limiter MANDATORY delivered, mounted ( <b>imperative if pressure &gt; pressure required</b> ) NOTE: Only one direction of rotation in this case	
KCR.45L.MBSP12	Safety valve kit from 30 L to 60 L	
K5F.4508L.02MSC	5 flexibles kit length 2 m for flow 45 L + 8 L + D without couplers	
	<b>Hitching bracket (connection between the cutting equipment and the excavator)</b>	<b>see P.37</b>

Spare parts -> see P.36



# METEOR

## P260



SCAN ME



MADE IN  
FRANCE



## Excavator mounting from 1.7 Tons

Reference	METEOR	Cutting capacity (mm)	Cutting length (m)	Weight (kg) Without hitching
MP260.BDC150.1	P260 CUTTER BAR 150cm	Ø30	1.50	150

### METEOR P260 MANUAL – CUTTER BAR 150 CM:

- \* A chassis with a pierced plate, predisposed to receive the hitching bracket between the pruning equipment and the excavator (**hitching bracket NOT supplied**)
- \* An offset arm **to position itself at 90° to the right and left** of the chassis, manually operated, with manual lock on a toothed nut
- \* A 90° rotation arm to recover the angle when working horizontally, depending on the turret position, manually operated, with manual lock on a toothed nut
- \* A 90° adjustable cutter bar support tube to work facing the hedge from bottom to top, sections facing upwards
- \* A cutter bar of 1.50 m:
  - > A single mobile blade
  - > 100cc hydraulic motor drive: flow rate between **20 and 40 l/min at 175 bar**
  - > Cutting capacity: up to 30mm
- \* A hydraulic kit, composed of:
  - > A set of flexibles for the cutter bar motor supply (pressure, return and drain), ending on bulkhead bushings

### Does not include:

- \* Flow regulator or pressure limiter
- \* Motor safety valve
- \* Hitching bracket between the excavator and the cutting equipment
- \* Hydraulic couplers
- \* Electric control panel

### Hydraulic prerequisites on the excavator:

- \* A simple effect hydraulic supply at the end of the boom with a continuous flow between **20 and 40 l/min at 210 bar**
- \* A drain with direct return to the container (max. allowable pressure on the drain: 2.5 bar)

### Prerequisites in cabin:

- \* A continuous cutter bar start control
- \* An emergency stop button

Delivered on a pallet 2200x800mm – ref. 25.510.002

Accessories		
	Hitching bracket (connection between the cutting equipment and the excavator)	see P.37

Spare parts -> see P.36



# METEOR

## P90



SCAN ME



MADE IN  
FRANCE



### Excavator mounting between 5 & 7 Tons

References	METEOR	Nbr of saw blades – knife plates / diam. (mm)	Cutting capacity (mm)	Cutting length (m)	Weight (kg) Without hitching
MP90.G90.3601	P90 LAMIER 3600 (45 l / 170 bar)	3 saw blades / Ø600	Ø200/Ø25	1.53	350
MP90.G90.4601	P90 LAMIER 4600 (45 l / 170 bar)	4 saw blades / Ø600	Ø200/Ø25	2.00	395
MP90.G90.1701	P90 LAMIER 1700 (45 l / 170 bar)	1 saw blade / Ø700	Ø240/Ø25	0.70	350

### Excavator mounting between 8 & 11 Tons

References	METEOR	Nbr of saw blades – knife plates / diam. (mm)	Cutting capacity (mm)	Cutting length (m)	Weight (kg) Without hitching
MP90.G90.1701	P90 LAMIER 1700 (45 l / 170 bar)	1 saw blade / Ø700	Ø240/Ø25	0.70	350
MP90.G90.3700.22	P90 LAMIER 3700 (45 l / 170 bar)	3 saw blades / Ø700	Ø240/Ø25	1.68	440
MP90.G90.4700.22	P90 LAMIER 4700 (45 l / 170 bar)	4 saw blades / Ø700	Ø240/Ø25	2.20	485
MP90.G90.1700	P90 LAMIER 1700 (85 l / 150 bar)	1 saw blade / Ø700	Ø240/Ø25	0.70	375

### Excavator mounting from 12 Tons

References	METEOR	Nbr of saw blades – knife plates / diam. (mm)	Cutting capacity (mm)	Cutting length (m)	Weight (kg) Without hitching
MP90.G90.1900	P90 LAMIER 1900 (75 l / 180 bar)	1 saw blade / Ø900	Ø500/n.a.	0.90	460
MP90.G90.2900	P90 LAMIER 2900 (75 l / 180 bar)	2 saw blades / Ø900	Ø500/n.a.	1.55	525
MP90.G90.4700	P90 LAMIER 4700 (85 l / 150 bar)	4 saw blades / Ø700	Ø240/Ø25	2.20	500
MP90.G90.5700	P90 LAMIER 5700 (85 l / 150 bar)	5 saw blades / Ø700	Ø240/Ø25	2.65	565

METEOR P90 **RIGHT OR LEFT** (to indicate at order)

#### METEOR P90 :

\* Chassis with a pierced plate, predisposed to receive the hitching bracket between the pruning equipment and the excavator (**Hitching not included**)

\* Lamier orientation 90° setting by hydraulic cylinder double effect

**Work on the left or on the right has to be precised at order**

\* Cutting equipment type **600 / 700 / 900**, To be choose (on the table above)

\* Hydraulic kit composed of:

> A safety valve between pressure and return to generate a freewheel and not abruptly stop the saw blade

> A cylinder equipped with safety valve

> A flexibles kit supply for the Lamier motor (pressure, return and drain) ending at a bulkhead on the pruning equipment chassis: ° Mâle ¾ BSP for the motor supply, ° Mâle 15L for the drain

> A flexibles kit for the cylinder oil supply ending at a bulkhead on the pruning equipment chassis: ° Mâle 10M

**To be precise at order: excavator sides where comes the hydraulic supply, big flow, little flow, return and drain**

\* Tools to maintain and to change cutting equipment

\* Operation and maintenance manual for the pruning equipment and spare parts manual.

#### Dos not include:

\* Flow regulator

\* Hitching bracket between the pruning equipment and the excavator

\* Flexible between the excavator and the cutting equipment

\* Hydraulic couplers

#### Hydraulic prerequisites on the excavator:

\* Continuous hydraulic oil flow simple effect at the end of the boom of **45 l/min at 170 bar / 75 l/min at 180 bar / 85 l/min at 150 bar**

\* This flow must be constant, regardless of the movements of the carrier, and at a forward speed less than 1 km/h

\* Drain to direct return to tank (max. allowable pressure on the drain: 2.5 bar)

\* Hydraulic oil flow line for the cylinder: 12 à 16 l/min à 180 bar

#### Prerequisites in cabin:

\* A start up button for the pruning equipment, \* A emergency stop button, \* A command to activate the movement of the cylinder

Delivered on a pallet 1300x1200mm full floor – ref. 25.510.067

#### Accessories

KRD.85L.45L.P90	Flow Regulator Kit <b>required</b> if flow rate is higher than the required flow rate, for motor 45L	
K5F.4508L.02MSC	Kit 5 flexibles 2 m length for oil flow 45 L + 8 L + D without couplers	
K5F.8508L.02MSC	Kit 5 flexibles 2 m length for oil flow 85 L + 8 L + D without couplers	
	<b>Hitching bracket (connection between the cutting equipment and the excavator)</b>	<b>see P.37</b>

**Spare parts -> see P.36**



# METEOR

## P180



SCAN ME



MADE IN  
FRANCE



## Excavator mounting from 12 Tons

References	METEOR	Nbr of saw blades – knife plates / diam. (mm)	Cutting capacity (mm)	Cutting length (m)	Weight (kg) Without hitching
MP180.G90.4700.11	P180 LAMIER 4700	4 saw blades / Ø700	Ø240/Ø25	2.20	750
MP180.G90.5700.11	P180 LAMIER 5700	5 saw blades / Ø700	Ø240/Ø25	2.65	810
MP180.G90.1900.11	P180 LAMIER 1900	1 saw blade / Ø900	Ø500/Øn.a.	0.90	720
MP180.G90.2900.11	P180 LAMIER 2900	2 saw blades / Ø900	Ø500/Øn.a.	1.55	760

METEOR P180 RIGHT OR LEFT (to indicate at order)

### METEOR P180 :

- \* Chassis with a pierced plate, predisposed to receive the hitching bracket between the pruning equipment and the excavator (**Hitching not included**)
- \* An offset arm to position itself 90° to the right or the left (to be specify at order) actuated by double effect cylinder
- \* A sheet metal support arm for working horizontally or vertically activated by double effect cylinder
- \* Cutting equipment type **700 / 900 diameter**, to be choose (on the table above)
- \* **Hydraulic kit** composed of:
  - > Function selector on the chassis for piloting the cylinder (12V or 24V supply)
  - > A safety valve between pressure and return to generate a freewheel and not abruptly stop the saw blade
  - > Cylinders equipped with safety valve
  - > Flexibles kit supply of the Lamier motor (pressure, return and drain) ending at 1 m from the pruning equipment chassis:
    - ° Female connectors 3/4" BSP for the motor supply
    - ° Female connector 15L for the drain
  - > Flexible kit for the selector oil supply ending at 1 m of the pruning equipment chassis
  - > Female connectors 10L

**To be precise at order: the sides where the hoses come from (big oil flow line, secondary line and drain)**

- \* **Electrical kit** composed of:
  - > 1.5 m cable without plug for the power supply of the selector ending at 1 m from the frame of the pruning equipment
- \* Tools to maintain and to change cutting equipment
- \* Operation and maintenance manual for the pruning equipment and spare parts manual

### Does not include:

- \* Flow regulator
- \* Hitching bracket between the pruning equipment and the excavator
- \* Hydraulic couplers
- \* The panel control for the selector
- \* The electrical cable and the plugs between the pruning equipment and the cabin

### Hydraulic prerequisites on the excavator:

- \* Continuous hydraulic oil flow simple effect at the end of the boom of **85 l/min at 150 bar / 75 l/min at 180 bar**
- \* This flow must be constant, regardless of the movements of the carrier, and at a forward speed less than 1 km/h
- \* Drain to direct return to tank (max. allowable pressure on the drain: 2.5 bar)
- \* Hydraulic oil flow line for piloting the cylinders: 12 to 16 l/min at 180 bar

### Prerequisites in cabin:

- \* A start up button for the pruning equipment
- \* An emergency stop button
- \* A command to activate the piloting of the line double effect for the movements
- \* A panel control and an electrical cable at the end of the boom, for piloting the function selector
- \* Electrical signal 24 V (**To be precised at order if you have 12 V**).

Accessories		
K5F.8508L.02MSC	Kit 5 flexibles lenght 2 m flow 85 L + 8 L + D without couplers	
	Hitching bracket (connection between the cutting equipment and the excavator)	see P.37

Spare parts -> see P.36





meteor  
P180i



SCAN ME



MADE IN  
FRANCE



## Excavator mounting from 12 Tons

Reference	METEOR	Nbr of saw blades – knife plates / diam. (mm)	Cutting capacity (mm)	Cutting length (m)	Weight (kg) Without hitching
<b>MP180I.D90.1900.GR</b>	<b>P180 LAMIER 1900 + Grapple</b>	1 saw blade / Ø900	Ø500/Øn.a.	0.90	750

### METEOR P180 REVERSED:

- \* Chassis with a pierced plate, predisposed to receive the hitching bracket between the pruning equipment and the excavator (**Hitching not included**) - Stand included in the frame
- \* An offset arm to position itself 90° to the right and to the left, activated by an orientation ring
- \* A lamier bar support arm to work on the right side of the frame, operated by a double-acting cylinder
- \* A cutting equipment **type 2900, diameter 900mm, assembled in single-blade:**
  - > Work on the right of the carrier, > Equipped with a saw blade diameter 900 mm - 80 teeth - thickness 5mm, > Second saw blade diameter 900mm – 120 teeth – thickness 5mm not assembled, > Removable blade separator when using both saw blades
  - > Hydraulic vane motor 42cm<sup>3</sup>: ° Double direction of rotation, ° With pressure limiter, ° Flow rate and pressure required: 75 l/ min at 180 bar, ° Rotation speed: 1600-1900 rpm
  - > Drive: Transmission by two polyVé belts 12 grooves - 57mm wide, ° Double key bearing, ° Large offset bearing at the top, > Fixation by the back by a square tube of 100x100mm, ° Shoe and blade protection housing
- \* **An opening grapple** 1200mm
- \* An **hydraulic kit** composed of:
  - > A function selector fixed on the frame, for the control of the cylinder to be supplied (12 or 24 V supply)
  - > A safety valve between pressure and return to generate a freewheel and not abruptly stop the saw blade
    - ° The lamier motor will only turn in one direction
  - > All cylinder equips with balancing valve
  - > A set of hoses for the lamier motor supply (pressure, return and drain), ending on bulkheads on the right side of the pruning equipment frame: ° 3/4" BSP male connectors for the motor supply, ° 15L male connectors for the drain
  - > A set of selector hoses terminating on bulkhead grommets on the right side of the pruning equipment frame, 10M male connectors.
- To be precised at the order: excavator side where the hydraulic supply comes from, with big flow, little flow, return and drain**
- \* **Electrical kit** composed of:
  - > A 1.50 m cable without plug for the power supply of the selector ending at 1.50 m from the frame of the pruning equipment
- \* Tools to maintain and to change cutting equipment
- \* Operation and maintenance manual for the Lamier and spare parts manual.

### Does not include:

- \* Flow regulator, \* Hitching bracket between the cutting equipment and the excavator, \* Hydraulic couplers
- \* The control box of the selector, \* The cable and electrical outlets between the pruning equipment and the cabin

### Hydraulic prerequisites on the excavator:

- \* Continuous hydraulic oil flow simple effect at the end of the boom of **75 l/min at 180 bar**
- \* This flow must be constant, regardless of the movements of the carrier, and at a forward speed less than 1 km/h
- \* Drain to direct return to tank (max. allowable pressure on the drain: 2.5 bar)
- \* Hydraulic supply double effect for piloting the movements of the pruning equipment: 12 to 16 l/min at 180 bar

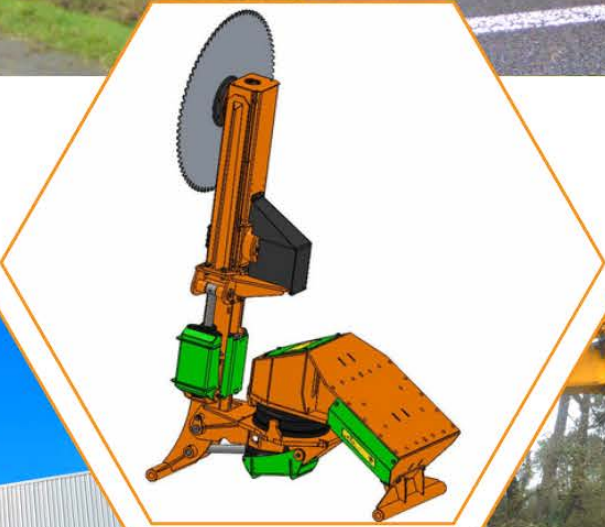
### Prerequisites in cabin:

- \* A continuous start up button for the Lamier,
- \* An emergency stop button
- \* A command to activate the piloting of the line double effect for the movements
- \* A control box as well as the cable to the end of the pendulum, for the control of the movement selector (Option)
- \* Electrical supply 24 V (**To be precise at order if you have 12 V**).

Accessories		
K5F.8508L.02MSC	Kit 5 flexibles length 2 m flow 85 L + 8 L + D without couplers	
	<b>Hitching bracket (connection between the cutting equipment and the excavator)</b>	<b>see P.37</b>

Spare parts -> see P.36







## Excavator mounting from 10 Tons

References	METEOR	Nbr of saw blades – knife plates / diam. (mm)	Cutting capacity (mm)	Cutting length (m)	Weight (kg) Without hitching
<b>MP360.01.1700.22</b>	<b>P360 LAMIER 1700</b> (45 l / 170 bar)	1 saw blade / Ø700	Ø240/Ø25	0.70	550
<b>MP360.01.1900</b>	<b>P360 LAMIER 1900</b> (75 l / 180 bar)	1 saw blade / Ø900	Ø500/Øn.a.	0.90	580

### METEOR P360 :

\* Chassis with a pierced plate, predisposed to receive the hitching bracket between the pruning equipment and the excavator (**Hitching NOT included**)

\* An offset arm to position itself 90° to the right and to the left, actuated by an orientation ring

\* An orientation arm for positioning the pruning equipment horizontally or vertically, activated by double effect cylinder

\* A Lamier support piece, incorporating a pivot making it possible to make a **cutting movement parallel to the saw blade**, forward or backward actuated by double effect cylinder

\* A cutting equipment **type Single Blade 700 two-bearings:**

> Equipped with a saw blade diameter 700mm - 80 teeth - thickness 4mm

> Gear hydraulic motor **22 cm3**

° Double rotation sense, ° Without pressure limiter

° Flow and pressure required: **45 l/min at 170 bar**

> Rotation speed: 2000 RPM

> Training: ° 12-grooves PolyVé transmission double belt - 57 mm width

\* A cutting equipment **type Single Blade 900 two-bearings:**

> Equipped with a saw blade diameter 900mm - 80 teeth - thickness 5mm

> Vane hydraulic motor **42 cm3**

° Double rotation sense, ° With pressure limiter

° Flow and pressure required: **75 l/min at 180 bar**

> Rotation speed: 1600-1900 RPM

> Training: ° 12-grooves PolyVé transmission double belt - 57 mm width

\* An **hydraulic kit** composed of:

> A function selector fixed to the chassis, for controlling the cylinders or the orientation ring (12 or 24 V supply)

> A safety valve between pressure and return to generate a freewheel and not abruptly stop the saw blade

> All cylinder equipped with safety valve

> A supply flexibles kit of the Lamier motor (pressure, return and drain), ending at 1 m of the pruning equipment chassis: ° Female connectors 3/4" BSP for the motor supply, ° Female connector 15L for the drain

> A supply flexibles kit for the cylinders ending at 1 m from the pruning equipment: ° Female connector 10L

**To be precised at the order: excavator side where the hydraulic supply comes from, with big flow, little flow, return and drain**

\* **Electrical kit** composed of:

> A control panel of the selector to be positioned in the cabin, > Electrical cable 20 m with plugs to be positioned on the arm

> Electrical cable with plugs, for the electrical supply of the selector ending at 1.50 m of the pruning equipment chassis

\* Tools to maintain and to change cutting equipment

\* Operation and maintenance manual for the pruning equipment and spare parts manual.

### Does not include:

\* Flow regulator or pressure limiter, \* Hitching bracket between the cutting equipment and the excavator, \* Hydraulic couplers

### Hydraulic prerequisites on the excavator:

\* Continuous hydraulic oil flow simple effect at the end of the boom of **45 l/min at 170 bar / 75 l/min at 180 bar**

\* This flow must be constant, regardless of the movements of the carrier, and at a forward speed less than 1 km/h

\* Drain to direct return to tank (max. allowable pressure on the drain: 2.5 bar)

\* Hydraulic supply double effect for piloting the movements of the pruning equipment: 12 to 16 l/min at 180 bar

### Prerequisites in cabin:

\* A continuous start up button for the Lamier, \* An emergency stop button, \* A command to activate the piloting of the line double effect for the movements, \* Electrical supply 24 V (**To be precise at order if you have 12 V**)

Accessories		
KRD.85L.45L	Flow Regulator Kit <b>required</b> if flow rate is higher than the required flow rate	
	<b>Hitching bracket (connection between the cutting equipment and the excavator)</b>	<b>see P.37</b>

Spare parts -> see P.36



## NOTES

~ 20 ~

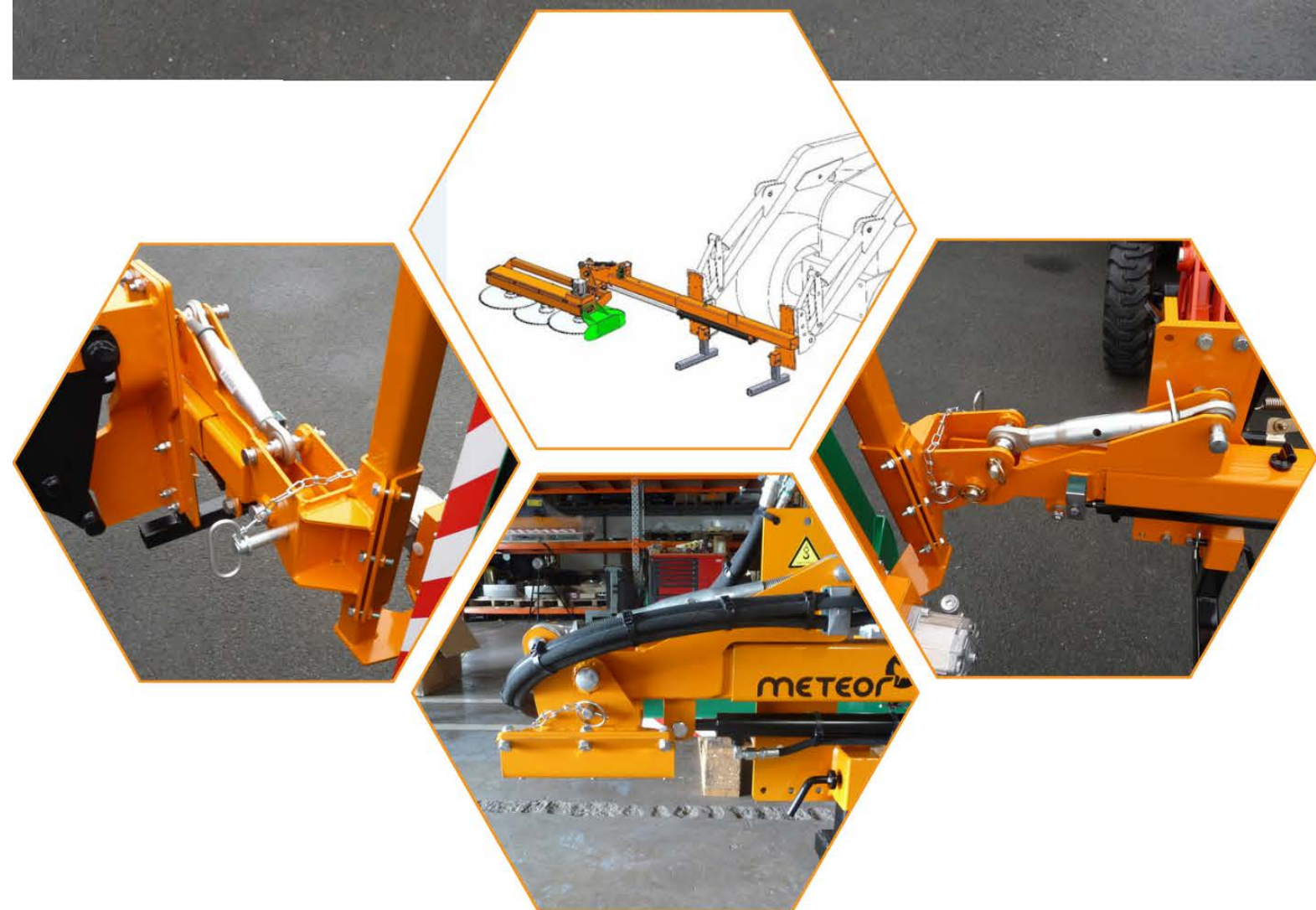


# MOUNTING ON FRONT LOADER

To meet your needs, the Meteor range of products is available for all types of front loaders.







SCAN ME



MADE IN  
FRANCE



## Front loader mounting

References	METEOR	Nbr of saw blades – knife plates / diam. (mm)	Cutting capacity (mm)	Cutting lenght (m)	Weight (kg) Without hitching
<b>MD100.3500.01</b>	<b>MD100 LAMIER 3500</b>	3 saw blades / Ø500	Ø160/Ø25	1.23	170
<b>MD100.4500.01</b>	<b>MD100 LAMIER 4500</b>	4 saw blades / Ø500	Ø160/Ø25	1.59	192
<b>MD100.3500.02</b>	<b>MD100 LAMIER 3500</b>	3 saw blades / Ø500	Ø160/Ø25	1.23	170
<b>MD100.4500.02</b>	<b>MD100 LAMIER 4500</b>	4 saw blades / Ø500	Ø160/Ø25	1.59	192

### METEOR MD100 :

- \* Chassis with a pierced plate, predisposed to receive the hitching bracket between the pruning equipment and the front loader (**Hitching NOT included**)
- \* Horizontally offset arm to the right of the equipment, to adjust the offset of the pruning equipment relative to the carrier, actuated by double effect cylinder 700 mm stoke, > In Vertical position, the Lamier is at an adjustable offset between 1.10 m and 1.80m relative to the center of the axis of the carrier
- \* A Lamier support piece, on a horizontal pivot, allowing to be positioned vertical or horizontal, **operated by a double acting cylinder**
- \* Cutting equipment **type 3500 / 4500** diameter 500mm: \* Working on the right of the carrier
- \* Equipped with 3/4 saw blades diameter 500mm - 96 teeth – thickness 3mm
- \* Gear hydraulic motor 11 cm3: ° Double rotation sense, ° Without pressure limiter, ° Flow and pressure required: **27 l/min at 170 bar**, ° Rotation speed :2500 RPM
- \* Training: > 5 grooves PolyVé transmission belt - 23 mm width
- \* Fixing on the back by a square tube support 50x50mm, \* Shoe and protection cover

#### METEOR MD100 VERSION 01 :

\* **A hydraulic kit** composed of: > A 6-way function selector to be positioned on the machine, > a set of connectors to connect the cylinder hoses, > 2 power supply hoses, length 1 m, > 1 power supply cable ending at 1 m from the attachment with a 2-pin plug, > 1 box with selection switch to be fixed in the cabin: ° with a cable length 6 m with a 2-pin plug to be fixed on the charger, ° with a power supply cable length 2 m with a standard 2-pin plug, ° a flow regulator block with a pressure limiter for the protection of the motor, > A resupply valve between pressure and return to generate a freewheel and not stop the blades abruptly, > A set of flexible hoses for the supply of the motor of the cutter bar (pressure, return and drain), ending at 1.50m from the frame of the pruning equipment: ° 5/8" BSP female connectors for the motor supply, ° 12L female connector for the drain, > A set of cylinder supply hoses ending at 1.50m from the pruning equipment frame: ° 10L female connectors

#### METEOR MD100 VERSION 02 :

\* **A hydraulic kit** composed of: > A hydraulic block requiring a simple effect, and allowing : A hydraulic block requiring a single action, and allowing: ° The start-up of the cutter bar in one direction, ° The freewheeling at the stop of the cutter bar and thus not stop abruptly the stop of the blades, ° The selection of the cylinder to be manipulated, ° The movement in both directions of the selected cylinder, > Cylinders equipped with balancing valve, > A set of flexible hoses for the supply of the hydraulic block (pressure, return and drain), ending at 1.50 m from the frame of the pruning equipment: ° 5/8" BSP female connectors for the motor supply, ° 12L female connector for the drain

\* **An electrical kit** composed of: > A control box of the distributor block to be positioned in the cabin, with a 6 m cable with plug, to be fixed on the carrier: ° A one-way motor start-up, ° Two 2-way joysticks to control the cylinders, ° An emergency stop, ° A protection fuse, ° A power cable 2G2.5 lg 2m with 3-pin plug, ° A control cable distributor 12G1, without plug, lg 3m, > A cable without plug, for the power supply of the distributor block ending at 1.50 m from the frame of the pruning equipment

- \* Tools to maintain and to change cutting equipment
- \* Operation and maintenance manual for the pruning equipment and spare parts manual

#### Does not include:

- \* Electrical kit for controlling the Lamier motor and the cylinder
- \* Hitching bracket between the pruning equipment and the front loader
- \* Hydraulic couplers
- \* Safety valve on the offset cylinder

#### Hydraulic prerequisite on the tractor:

- \* A single effect hydraulic oil supply at the end of the front loader with a continuous oil flow of **27 l/min at 170 bar**
- \* Drain to direct return to tank (max. allowable pressure on the drain: 2.5 bar)
- \* A double effect hydraulic oil supply to control the offset cylinder: 4 to 10 l/min at 180 bar (3<sup>rd</sup> function of the front loader)

#### Prerequisites in cabin:

- \* A continuous start up button for the Lamier
- \* A command to activate the piloting of the line double effect for the movements

Delivered on a pallet 1900x900mm full floor – ref. 25.510.060

### Accessories

KSF.2VDE.000	Reduction in value function selector kit + panel control for 2 cylinders	
MD100.OPT.VC120	Reduction in value inclination cylinder C120	
CE.060.102.28L	Power pack 60L – Simple pump 28 l/min	
K3F.28L.08M	Kit 3 flexibles lenght 8 m with 3 sets of couplers, for flow rate 28L	
	<b>Hitching bracket (connection between the cutting equipment and the front loader)</b>	<b>see P.37</b>

Spare parts -> see P.36



# METEOR

## T90R



SCAN ME



MADE IN  
FRANCE



## Front loader mounting

References	METEOR	Nbr of saw blades – knife plates / diam. (mm)	Cutting capacity (mm)	Cutting length (m)	Weight (kg) Without hitching
MT90.R02.2DE.3500	T90R LAMIER 3500	3 saw blades / Ø500	Ø160/Ø25	1.23	360
MT90.R02.2DE.4500	T90R LAMIER 4500	4 saw blades / Ø500	Ø160/Ø25	1.59	380
MT90.R02.2DE.5500	T90R LAMIER 5500	5 saw blades / Ø500	Ø160/Ø25	1.95	400

### METEOR T90R LAMIER 500:

\* Chassis with a pierced plate, predisposed to receive the hitching bracket between the pruning equipment and the front loader (**Hitching NOT included**)

\* An arm pivoting horizontally to the left (or right depending on the desired mounting) of the equipment, activated manually  
> In vertical position, the Lamier is at a fixed offset of 2.85 m compared to the middle axis of the carrier

**Work on the left or on the right has to be precised at order**

\* A cutting equipment **type 3500 / 4500 / 5500** diameter 500mm:

> Work on the right of the carrier, > Equipped of 3 / 4 / 5 saw blades diameter 500mm - 96 teeth - thickness 3mm

> Gear hydraulic motor 11 cm<sup>3</sup>: ° Double rotation sense, ° Without pressure limiter, ° Flow and pressure required: **27 l/min à 170 bar**, ° Rotation speed: 2500 RPM

\* A Lamier support piece, on a horizontal pivot, allowing to be positioned vertical or horizontal, operated by a double effect cylinder (110° deflection), activated by a double acting cylinder with balancing valve

\* An **hydraulic kit** composed of:

> A flow regulator with pressure limiter to protect the motor (only one rotation sense allowed)

> A supply flexibles kit of the Lamier motor (pressure, return and drain), ending at 1.00 m of the pruning equipment chassis: ° Female connectors 5/8" BSP for the motor supply, ° Female connector 12L for the drain

> A set of 2 flexible hoses for the supply of the cylinders ending with screwed connectors (10L) at 1 m from the hitching bracket

\* Tools to maintain and to change cutting equipment

\* Operation and maintenance manual for the pruning equipment and spare parts manual

#### Does not include:

\* An electrical kit for controlling the Lamier motor and the cylinder

\* A supply valve between pressure and return to generate a freewheel and not abruptly stop the saw blade

\* The hitching bracket between the front loader and the pruning equipment

\* The hydraulic couplers

#### Hydraulic prerequisites on the tractor:

\* Continuous hydraulic oil flow simple effect at the end of the boom of **27 l/min at 170 bar**

\* This flow must be constant, regardless of the movements of the carrier, and at a forward speed less than 1 km/h

\* Drain to direct return to tank (max. allowable pressure on the drain: 2.5 bar)

\* Hydraulic supply double effect for piloting the cylinder: 4 to 10 l/min at 180 bar

#### Prerequisites in cabin:

\* A continuous start up button for the Lamier

Delivered on a pallet 2250x1000mm full floor – ref. 25.510.056

### Accessories

OPT.MD100.1SE.1VE	1 cylinder control box + hydraulic block + supply motor simple effect	
MT90.R02.650C	Safety break away	
CE.060.102.28L	Power pack 60L – Simple pump 28 l/min – Distributor - Box	
K3F.28L.08M	Kit 3 flexibles length 8 m with 3 sets of couplers, for flow 28L	
	<b>Hitching bracket (connection between the cutting equipment and the carrier)</b>	<b>see P.37</b>

**Spare parts -> see P.36**



# METEOR

## T90C on front loader



SCAN ME



MADE IN  
FRANCE



## Front loader mounting

References	METEOR	Nbr of saw blades – knife plates / diam. (mm)	Cutting capacity (mm)	Cutting length (m)	Weight (kg) Without hitching
MT90C.3600	T90C LAMIER 3600	3 saw blades / Ø600	Ø200/Ø25	1.53	460
MT90C.4600	T90C LAMIER 4600	4 saw blades / Ø600	Ø200/Ø25	2.00	500

### METEOR T90C:

- \* Chassis with a pierced plate, predisposed to receive the hitching bracket between the pruning equipment and the front loader (**Hitching NOT included**)
- \* Horizontally offset arm to the right (or left according to the mounting) of the equipment, to fix the Lamier offset according to the carrier, operated by a double effect cylinder stroke 1000 mm
  - > In vertical position, the Lamier is at an adjustable offset between 1.15 m to 2.15 m relative to the center of the axis of the carrier
- Work on the left or on the right has to be precised at order**
- \* A Lamier support piece, on a horizontal pivot, allowing to be positioned vertical or horizontal, operated by a double effect cylinder (110° deflection)
- \* Cutting equipment **type 3600 / 4600** diameter 600mm:
  - > Equipped of 3 / 4 saw blades diameter 600mm - 96 teeth - thickness 3.5mm
  - > Gear hydraulic motor 22 cm<sup>3</sup> : ° Double rotation sense, ° Without pressure limiter
  - ° Flow and pressure required: **45 l/min at 170 bar**, ° Rotation speed: 2000 RPM
  - > Training: 10 grooves PolyVé transmission belt - 47 mm width
  - > Fixing on the back by a square tube support 100x100mm, \* Shoe and protection cover
- \* An **hydraulic kit** composed of:
  - > A flow regulator with pressure limiter to protect the motor (only one rotation sense allowed)
  - > A function selector predisposed on the chassis, for the control of the cylinder to be supplied (12 V supply)
  - > All cylinder equipped with balancing valve
  - > A supply flexibles kit of the Lamier motor (pressure, return and drain), ending at 1.50 m of the pruning equipment chassis: ° Female connectors 5/8" BSP for the motor supply, ° Female connector 12L for the drain
  - > A supply flexibles kit for the cylinders ending at 1.50 m from the pruning equipment: ° Female connectors 10L
- \* An **electrical kit** composed of:
  - > A control panel of the selector to be positioned in the cabin, with an electrical cable 6 m with plugs to be positioned on the carrier
  - > Electrical cable with plugs, for the electrical supply of the selector ending at 1.50 m of the pruning equipment chassis
- \* Tools to maintain and to change cutting equipment
- \* Operation and maintenance manual for the pruning equipment and spare parts manual

### Does not include:

- \* An electrical kit for controlling the Lamier motor and the cylinder, \* A supply valve between pressure and return to generate a freewheel and not abruptly stop the saw blade, \* The hitching bracket between the front loader and the pruning equipment, \* The flexibles between the carrier and the pruning equipment, \* The hydraulic couplers

### Hydraulic prerequisites on the tractor:

- \* Continuous hydraulic oil flow simple effect at the end of the boom of **45 l/min at 170 bar**
- \* This flow must be constant, regardless of the movements of the carrier, and at a forward speed less than 1 km/h
- \* Drain to direct return to tank (max. allowable pressure on the drain: 2.5 bar)
- \* Hydraulic supply double effect for piloting the movements of the pruning equipment: 4 to 10 l/min at 180 bar

### Prerequisites in the cab:

- \* A continuous start up button for the Lamier
- \* A command to activate the piloting of the line double effect for the movements
- \* Electrical supply 12 V

Delivered on a pallet 2250x1000mm full floor – ref. 25.510.056

Accessories		
MT90.R02.650C	Safety break away	
OPT.3DE	Reduction 3DE available	
CE.060.104R	Power pack 60L simple pump flow rate 45L – Cooler – Distributor - Box	
K3F.45L.09MC	Kit 3 flexibles length 9 m with couplers	
K4F.4508L.08M	Kit 4 flexibles length 8 m with a sets of 5 couplers, for a flow rate 45L + 8L	
K5F.4508L.08M	Kit 5 flexibles length 8 m with a sets of 5 couplers, for a flow rate 45L + 8L	
	<b>Hitching bracket (connection between the cutting equipment and the front loader)</b>	<b>see P.37</b>

Spare parts -> see P.36



# NOTES

Handwriting practice lines consisting of 28 horizontal dotted lines.



# MOUNTING ON TELESCOPIC LOADER

Finally, the Meteor range will be the perfect ally for your telescopic handlers in order to carry out your different sizes.







meteor  
T90R



SCAN ME



MADE IN  
FRANCE



## Telescopic loader mounting

References	METEOR	Nbr of saw blades – knife plates / diam. (mm)	Cutting capacity (mm)	Cutting length (m)	Weight (kg) Without hitching
AA- MT90.R02.3600G	T90R LAMIER 3600 inclination +/-10°	3 saw blades / Ø600	Ø200/Ø25	1.53	430
AA- MT90.R02.4600G	T90R LAMIER 4600 inclination +/-10°	4 saw blades / Ø600	Ø200/Ø25	2.00	470
BB- MT90.R02.3600G-1	T90R LAMIER 3600 inclination +/-100°	3 saw blades / Ø600	Ø200/Ø25	1.53	440
BB- MT90.R02.4600G-1	T90R LAMIER 4600 inclination +/-100°	4 saw blades / Ø600	Ø200/Ø25	2.00	480

### METEOR T90R LAMIER 600:

\* Chassis with a pierced plate, predisposed to receive the hitching bracket between the pruning equipment and the front loader (**Hitching NOT included**)

\* Horizontally offset arm to the left (or right according to the mounting wanted) of the equipment, manually operated

> In Vertical position, the Lamier is at a fixed offset of 2.85 m relative to the center of the axis of the carrier

### Work on the left or on the right has to be precised at order

\* Cutting equipment **type 3600 / 4600** diameter 600mm: > Work at the Left of the carrier, > Equipped of 3 / 4 saw blades diameter 600mm - 96 teeth – thickness 3.5mm, > Gear hydraulic motor 22 cm3: ° Double rotation sense, ° Without pressure limiter, ° Flow and pressure required: **45 l/min at 170 bar**, ° Rotation speed: 2000 RPM

\* Tools to maintain and to change cutting equipment

\* Operation and maintenance manual for the pruning equipment and spare parts manual

### WITH AA- VERSION

\* A Lamier support piece, on a horizontal pivot, allowing to adjust the Lamier position (+/-10° according to vertical), manually operated by push bar

\* An **hydraulic kit** composed of:

> A flow regulator with pressure limiter to protect the motor (only one rotation sense allowed)

> A supply flexibles kit of the Lamier motor (pressure, return and drain), ending at 1 m of the pruning equipment chassis:

- ° Female connectors 1" BSP for the motor supply
- ° Female connector 12L for the drain

### WITH BB- VERSION

\* A Lamier support piece, on a horizontal pivot, allowing to adjust the Lamier position (+/-10° according to vertical), manually operated by push bar

\* An **hydraulic kit** composed of:

> An hydraulic block requiring simple effect and allowing: ° The Lamier start-up in only one sens, ° Freewheeling when the Lamier stops and thus not stopping the blades abruptly, ° Displacement in both directions of the selected cylinder

> Cylinder equiped of balancing valve, > A supply flexibles kit of the Lamier motor (pressure, return and drain), ending at 1 m of the pruning equipment chassis: ° Female connectors 1" BSP for the motor supply, ° Female connector 12L for the drain

\* An **electrical kit** composed of:

> A control panel of the distributor block to be positioned in the cabin: ° A motor start-up simple sens, ° Two 2-way joysticks for the control of the tilt cylinders of the Lamier, ° An emergency stop, ° One protective fuse, ° One power supply cable 2G2.5 lenght 2m with 3-pin plug, ° One control cable 7G1 distributor, without plug, lenght 3m  
> A cable without plug, for the power supply of the distributor block ending at 1.50 m from the pruning equipment chassis

### Does not include:

- \* An electrical kit for controlling the Lamier motor
- \* A supply valve between pressure and return to generate a freewheel and not abruptly stop the saw blade
- \* The hitching bracket between the front loader and the pruning equipment
- \* The hydraulic couplers

### Hydraulic prerequisites on the telescopic:

\* Continuous hydraulic oil flow simple effect at the end of the boom of **45 l/min at 170 bar**

\* This flow must be constant, regardless of the movements of the carrier, and at a forward speed less than 1 km/h

\* Drain to direct return to tank (max. allowable pressure on the drain: 2.5 bar)

### Prerequisites in cabin:

- \* A continuous star-up button of the Lamier
- \* An emergency stop button

### Does not include:

- \* The electrical cable between the cabin and the pruning equipment
- \* The hitching bracket between the carrier and the pruning equipment
- \* The hydraulic couplers

### Hydraulic prerequisites on the telescopic:

\* Continuous hydraulic oil flow simple effect at the end of the boom of **45 l/min at 170 bar for the lamier (+10 l/min for the cylinder)**

### Prerequisites in cabin:

- \* A continuous star-up button of the Lamier
- \* An electrical cable 7G1 on the arm for the connexion between the box in cabin and the equipment at the end of the arm
- \* 12V power supply for the control box

Delivered on a pallet 2500x1250mm full floor – ref. 25.510.053

## Accessories

MT90.R02.650C	Safety break away	
OPT.BLUETOOTH	Increase in value for Bluetooth box	
KENEH.12.10.07M	Complete kit electric reel and drain reel 7M	
KENEH.12.10.11M	Complete kit electric reel and drain reel 11M	
KENHG.010.007	Complete kit drain reel 7M	
KENHG.010.011	Complete kit drain reel 11M	
KENE.02.07M	Electrical cable reel kit 7M	
KENE.02.11M	Electrical cable reel kit 11M	
KCS.012.012	Spiral cord electrical kit	
	<b>Hitching bracket (connection between the cutting equipment and the carrier)</b>	<b>see P.37</b>

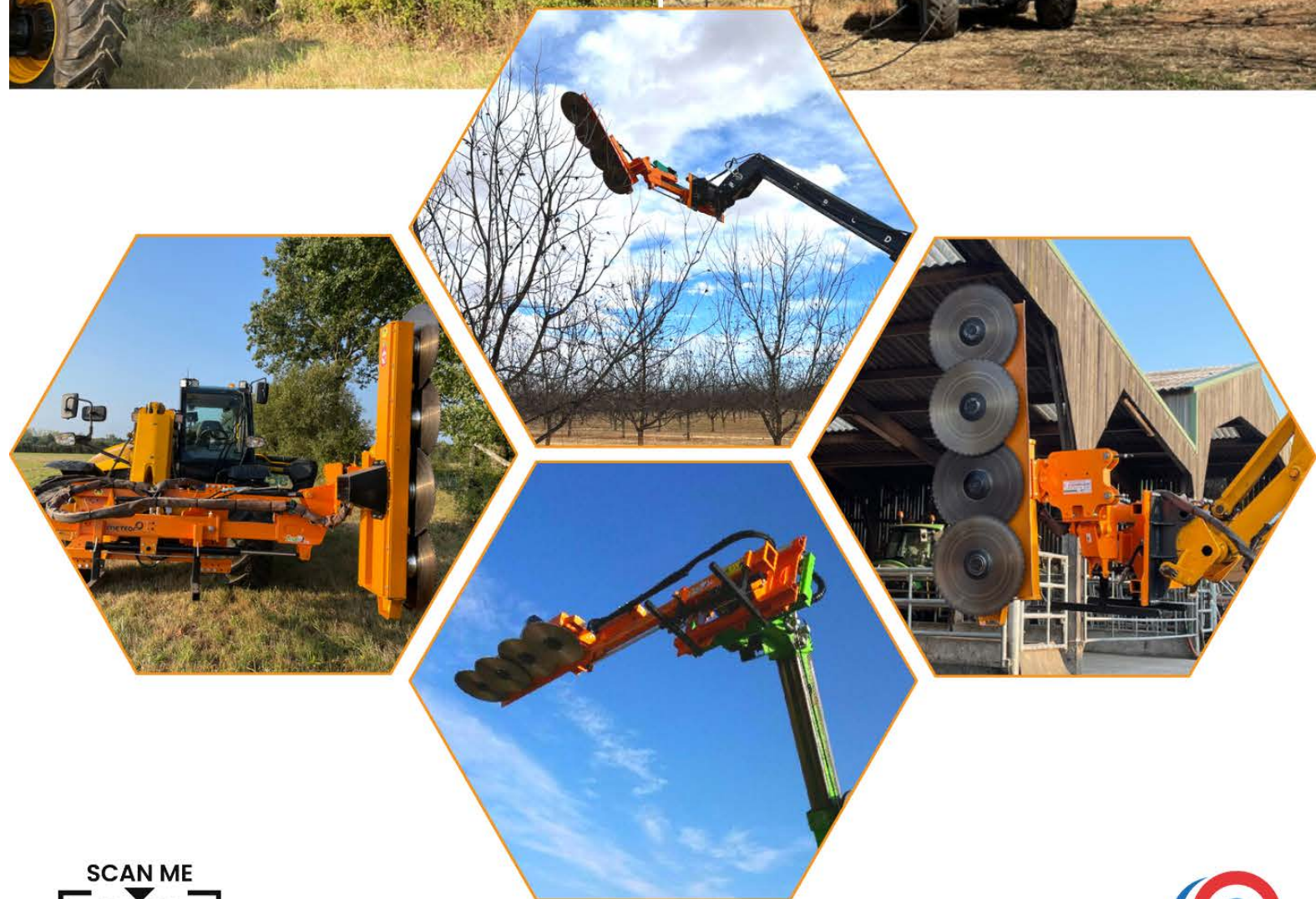
Spare parts -> see P.36





# meteor

## T90C on telescopic



SCAN ME



MADE IN  
FRANCE



## Telescopic loader mounting

References	METEOR	Nbr of saw blades – knife plates / diam. (mm)	Cutting capacity (mm)	Cutting length (m)	Weight (kg) Without hitching
<b>MT90C.3600G-1</b>	<b>T90C LAMIER 3600 + kit hydr.</b>	3 saw blades / Ø600	Ø200/Ø25	1.53	420
<b>MT90C.4600G-1</b>	<b>T90C LAMIER 4600 + kit hydr.</b>	4 saw blades / Ø600	Ø200/Ø25	2.00	460

### METEOR T90C :

- \* Chassis with a pierced plate, predisposed to receive the hitching bracket between the pruning equipment and the front loader (**Hitching NOT included**)
- \* Horizontally offset arm to the left (or right according to the mounting) of the equipment, to fix the Lamier offset according to the carrier, operated by a double effect cylinder stroke 1000 mm

> In vertical position, the Lamier is at an adjustable offset between 1.15 m to 2.15 m relative to the center of the axis of the carrier

#### Work on the left or on the right has to be precised at order

- \* A Lamier support piece, on a horizontal pivot, allowing to be positioned vertical or horizontal, operated by a double effect cylinder (110° deflection)

#### \* Cutting equipment **type 3600 / 4600** diameter 600mm:

> Work at the Left of the carrier, > Equiped of 3 / 4 saw blades diameter 600mm - 96 teeth - thickness 3.5mm

> Gear hydraulic motor 22 cm<sup>3</sup>: ° Double rotation sense, ° Without pressure limiter

° Flow and pressure required: **45 l/min at 170 bar**, ° Rotation speed: 2000 RPM

> Training: 10 groves PolyVé transmission belt - 47 mm width

> Fixing on the back by a square tube support 100x100mm, \* Shoe and protection cover

#### \* **Hydraulic kit** composed of:

> An hydraulic block requiring simple effect and allowing:

° The Lamier start-up in only one sens, ° Freewheeling when the Lamier stops and thus not stopping the blades abruptly, ° The cylinder selection to operate with, ° Displacement in both directions of the selected cylinder

> The cylinders equipped with balancing valve

> A supply flexibles kit of the Lamier motor (pressure, return and drain), ending at 1.50 m of the pruning equipment chassis: ° Female connectors 5/8" BSP for the motor supply, ° Female connector 12L for the drain

#### \* **Electrical kit** composed of:

> A control panel of the distributor block to be positioned in the cabin, with an electrical cable 6 m with plugs to be positionned on the carrier:

° A motor start-up simple sens, ° Two 2-way joysticks for the control of the cylinders, ° An emergency stop

One protective fuse, ° One power supply cable 2G2.5 lenght 2m with 3-pin plug, ° One control cable 12G1 distributor, without plug, lenght 3m

> A cable without plug, for the power supply of the distributor block ending at 1.50 m from the pruning equipment chassis

\* Tools to maintain and to change cutting equipment

\* Operation and maintenance manual for the pruning equipment and spare parts manual

#### Does not include:

\* An electrical kit between the cabin and the pruning equipment, \* The hitching bracket between the carrier and the pruning equipment, \* The hydraulic couplers

#### Hydraulic prerequisites on the telescopic:

\* Continuous hydraulic oil flow simple effect at the end of the boom of **45 l/min at 170 bar for the Lamier (+10 l/min for the cylinder)**

\* This flow must be constant, regardless of the movements of the carrier, and at a forward speed less than 1 km/h

\* Drain to direct return to tank (max. allowable pressure on the drain: 2.5 bar)

#### Prerequisites in the cab:

\* A continuous start-up button of the flow

\* An electrical cable 12G1 positioned on the arm for the connection between the control panel in cabin and the equipment at the end of the arm

\* Electrical supply 12 V for the control panel

Delivered on a pallet 2250x1000 full floor – ref. 25.510.056

Accessories		
MT90.R02.650C	Safety break away	
OPT.BLUETOOTH	Increase in value for Bluetooth box	
KENEH.12.10.07M	Complete kit electric reel and drain reel 7M	
KENEH.12.10.11M	Complete kit electric reel and drain reel 11M	
KENHG.010.007	Complete kit drain reel 7M	
KENHG.010.011	Complete kit drain reel 11M	
KENE.02.07M	Electrical cable reel kit 7M	
KENE.02.11M	Electrical cable reel kit 11M	
KCS.012.012	Spiral cord electrical kit	
	<b>Hitching bracket (connection between the cutting equipment and the carrier)</b>	<b>see P.37</b>

Spare part -> see P.36



**Before to study your request, please specify all informations indicated just below:**

## EXCAVATOR TYPE

- Type of excavator: ☐ Tyres ☐ Caterpillar track
- Disponible flow:
- Presence of an auxiliary line: ☐ Yes ☐ No

## IN THE CABIN

- Pression line: ☐ Right ☐ Left
- Return line: ☐ Right ☐ Left
- Drain: ☐ Right ☐ Left
- P1 (auxiliary line): ☐ Right ☐ Left
- P2 (auxiliary line): ☐ Right ☐ Left

## ELECTRICAL SUPPLY

- ☐ 12W ☐ 24W

## HITCHING

- ☐ Axis ☐ Fast
- ↳ Complete the following plan dimension      ↳ Precise the type:



**Relevé de côtes**

**Interface d'accrochage**

DESSINATEUR : JB

LE : 27/02/2018

Côte (en mm))

A

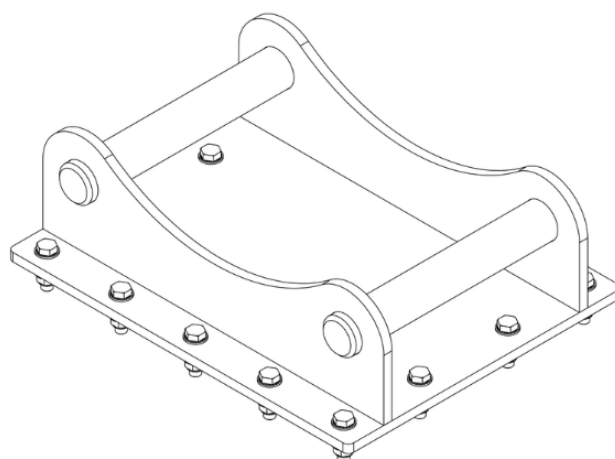
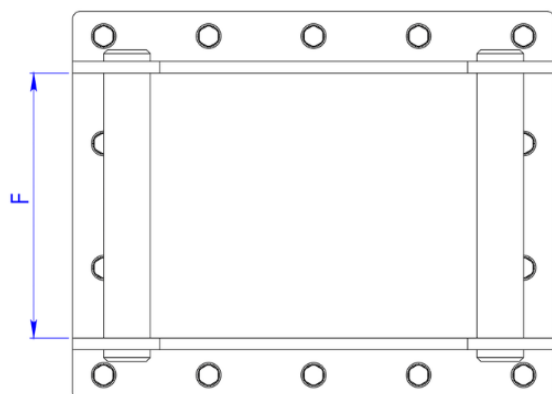
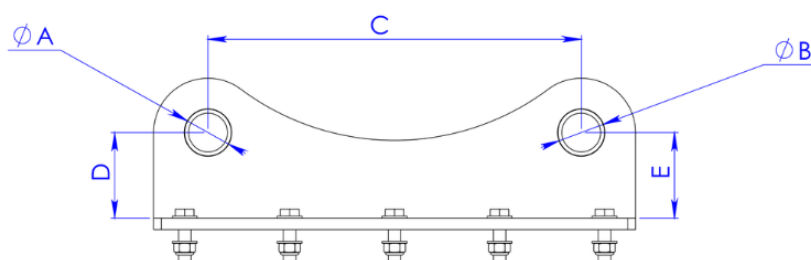
B

C

D

E

F



**COUP'ECO s.a.s.**

Z.I. du Chail  
17800 PONS  
Tel : 05.46.96.25.50  
Fax : 05.46.94.64.72  
email : [coupeco@coupeco.com](mailto:coupeco@coupeco.com)  
web : [www.coupeco.com](http://www.coupeco.com)



## SPARE PARTS / ACCESSORIES

### LAMIER Ø500

<b>30.510.250.PM</b>	PLATE 500 COMPLETE WITH 2 STRAIGHT KNIVES AND BOLTS > <b>FIRST ASSEMBLY</b>	
<b>30.510.250</b>	PLATE 500 COMPLETE WITH 2 STRAIGHT KNIVES AND BOLTS	
<b>30.702.451</b>	2 STRAIGHT KNIVES KIT 2C 2T LG168 WITH COMPLETE BOLTS	
<b>35.600.601</b>	SAW BLADES DIAM. 500 - 96 TEETH – THICKNESS 3MM - AL 45	
<b>30.510.260</b>	1 SAW BLADE Ø500 KIT WITH BLADE AND FLASK (unitary)	
<b>21.750.501</b>	BELT	

### LAMIER Ø600

<b>14.500.704C</b>	COMPLETE REINFORCED 600/650 PLATE WITH 2 SHORT KNIVES AND BOLTS	
<b>30.702.453C</b>	2 STRAIGHT KNIVES KIT 2C 2T LG116 WITH COMPLETE BOLTS	
<b>35.600.609</b>	SAW BLADES DIAM. 600 - 96 TEETH – THICKNESS 3.5MM	
<b>21.750.505</b>	10 GROOVE BELT	

### LAMIER Ø700

<b>14.500.704C</b>	COMPLETE REINFORCED 600/650 PLATE WITH 2 SHORT KNIVES AND BOLTS	
<b>30.702.453C</b>	2 STRAIGHT KNIVES KIT 2C 2T LG116 WITH COMPLETE BOLTS	
<b>35.600.780</b>	SAW BLADES DIAM. 700 - 80 TEETH – THICKNESS 4MM	
<b>21.750.506</b>	12 GROOVE BELT	

### LAMIER Ø900

<b>35.600.614</b>	SAW BLADES DIAM. 900 - 80 HOOKED TEETH – THICKNESS 5MM	
<b>35.600.616</b>	SAW BLADES DIAM. 900 - 120 TEETH – THICKNESS 5MM	
<b>35.600.614C</b>	SAW BLADES DIAM. 900 - 80 HOOKED TEETH – <b>CARBIDE</b> --> FOR SINGLE-BLADE USE ONLY	
<b>21.750.507</b>	DOUBLE 12 GROOVE BELT	



## HITCHING BRACKETS

### For excavator mounting

		BOLT-ON HITCHING BRACKET WITH THEADED Ø30 AXLES	
		BOLT-ON HITCHING BRACKET WITH THEADED Ø35 AXLES	
		BOLT-ON HITCHING BRACKET WITH THEADED Ø40 AXLES	
		BOLT-ON HITCHING BRACKET WITH THEADED Ø45 AXLES	
		BOLT-ON HITCHING BRACKET WITH THEADED Ø50 AXLES	
		BOLT-ON HITCHING BRACKET WITH THEADED Ø55 AXLES	
		BOLT-ON HITCHING BRACKET WITH THEADED Ø60 AXLES	
		BOLT-ON HITCHING BRACKET WITH THEADED Ø65 AXLES	
		BOLT-ON HITCHING BRACKET WITH THEADED Ø80 AXLES	
MBI		AR15 BOLT-ON HITCHING BRACKET	
MBI		AR30 BOLT-ON HITCHING BRACKET	
MBI		AR40 BOLT-ON HITCHING BRACKET	
MBI		AR50 BOLT-ON HITCHING BRACKET	
MBI		AR70 BOLT-ON HITCHING BRACKET	
MBI		CR15 BOLT-ON HITCHING BRACKET	
MBI		CR30 BOLT-ON HITCHING BRACKET	
MBI		CR40 BOLT-ON HITCHING BRACKET	
MBI		CR50 BOLT-ON HITCHING BRACKET	
MBI		CR70 BOLT-ON HITCHING BRACKET	
MORIN	MP.MO00.010	M0 BOLT-ON HITCHING BRACKET	
MORIN	MP.MO01.010	M1 BOLT-ON HITCHING BRACKET	
MORIN	MP.MO02.010	M2 BOLT-ON HITCHING BRACKET	
MORIN	MP.MO03.010	M3 BOLT-ON HITCHING BRACKET	
MORIN	MP.MO04.010	M4 BOLT-ON HITCHING BRACKET	
MORIN	MP.MO05.010	M5 BOLT-ON HITCHING BRACKET	
MORIN	MP.MO06.010	M6 BOLT-ON HITCHING BRACKET	
MECALAC		CONNECT 12 NG BOLT-ON HITCHING BRACKET	
		HITCHING BRACKET TO BE REALIZED, WITH CUSTOMER SUPPLY EARS	

### For front loader and telescopic loader mounting

BOCAT	MT90R.BOB.01.010	BOBCAT HITCHING BRACKET	
CLAAS	MT90R.CLASS.01.010	CLAAS HITCHING BRACKET	
COCHET	INT.MD.COCX54	COCHET CX54 HITCHING BRACKET	
D.FAHR	MT90R.DFAHR	JLG/DEUTZ FAHR HITCHING BRACKET	
DIECI	MT90R.DIE.01.010	DIECI HITCHING BRACKET	
EUROPE	COS.3M1.EU	EUROPE HITCHING BRACKET <b>ONLY FOR MD100 / MD110 / MT90C</b>	
EUROPE	MT90R.EU.01.010	EUROPE HITCHING BRACKET <b>ONLY FOR MT90 / MT90R</b>	
FAUCHEUX	COS.FAU.F20	FAUCHEUX HITCHING BRACKET <b>ONLY FOR MD100 / MD110 / MT90C</b>	
FAUCHEUX	MT90R.FX.01.010	FAUCHEUX HITCHING BRACKET <b>ONLY FOR MT90 / MT90R</b>	
JCB	MT90R.JCB.01.010	JCB Q-FIT HITCHING BRACKET	
JCB	MT90R.JCB.01.020	JCB TOOL CARRIER HITCHING BRACKET	
JCB	MT90R.MATBRO.000	JCB MATBRO HITCHING BRACKET	
KRAMER	MT90R.KRAM.01.010	KRAMER HITCHING BRACKET	
MANITOU	MT90R.MAN.01.010	MANITOU HITCHING BRACKET	
MERLO	MT90R.MER.01.010	MERLO HITCHING BRACKET	
MX	COS.MX.65	MX HITCHING BRACKET <b>ONLY FOR MD100 / MD110 / MT90C</b>	
MX	MT90R.MX.01.010	MX HITCHING BRACKET <b>ONLY FOR MT90 / MT90R</b>	
N.HOLLAND	MT90R.NWH.01.010	NEW HOLLAND HITCHING BRACKET	



## NOTES

~ 38 ~



## NOTES

~ 39 ~





**Contact details:**

ZI du Chail - 17800 PONS - France

Tel. +33 (0)5 46 96 25 50

[coupeco@coupeco.com](mailto:coupeco@coupeco.com)

[www.coupeco.com](http://www.coupeco.com)



Video of the range



2023

